

CORD ORGANIZING

CORDMATE® II

Cord Channel

Perfect for concealing multiple cords, wires, and cables.

Especially suited for covering home entertainment wires, speaker cables, TV/video cabling, and home office wiring. Self-adhesive backing makes for easy installation. Stylish design complements any interior setting. Paintable.

C50



60" L x 1" W x 1/2" H

1542mm L x 25mm W x 12.7mm H



TOOLS YOU'LL NEED:

- Tape measure
- PVC cutter or fine tooth hacksaw

CORDMATE II parts checklist:



CMK50 CordMate® II Cord Cover Kit

- 4 pieces 30" channel - C50
- 3 couplings - C59
- 1 T-fitting - C51
- 2 flat elbows - C56
- 1 inside elbow - C57
- 1 outside elbow - C58



C210 White CordMate® II Kit

- 12' of cord channel (3 sections, 4' long)
- 2 flat elbows
- 1 inside elbow
- 1 outside elbow
- 2 couplings
- 1 T-fitting



C50 White Wire Channel

Covers multiple cord bundles.



C53 White Data Comm Box

For mounting phone, fax, cable and audio connections (not for power).



C56 White Flat Elbow

For making a left or right 90° turn on a flat surface.



C57 White Inside Elbow

For making a 90° turn around an inside corner from wall-to-wall or wall-to-ceiling.



C58 White Outside Elbow

For making a 90° turn around an outside corner.



C51 White T-Fitting

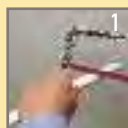
For installation requiring 3-way branching including 90° angle.



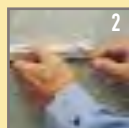
C59 White Coupling

For concealing seams where channel sections meet.

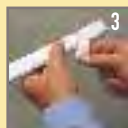
Easy to install:



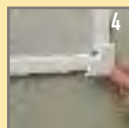
1
Cut CordMate II to size.



2
Lay in wire. Snap closed.



3
Peel off tape backing and attach to wall.



4
Finish by attaching components where needed.