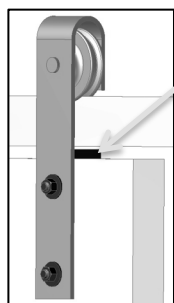
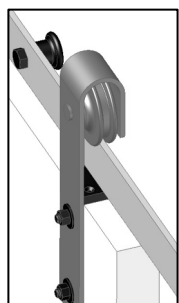




Step 9
Attach the hangers to the door, then place the door on the track.



Anti-Jump Block
(Optional)



FLAT TRACK

BY LEATHERNECK HARDWARE

Step 10 (If Included)
Once the door is on the track, install the anti-jump blocks underneath the hangers, keeping the door on the track.

Quick Reference Installation Guide

For our full detailed installation instructions & video, please visit our website at www.doorhdwe.com/ft_install

Thank you for choosing Leatherneck Hardware for your specialty sliding door needs. For more detailed installation instructions, please visit our website at www.doorhdwe.com/ft_install

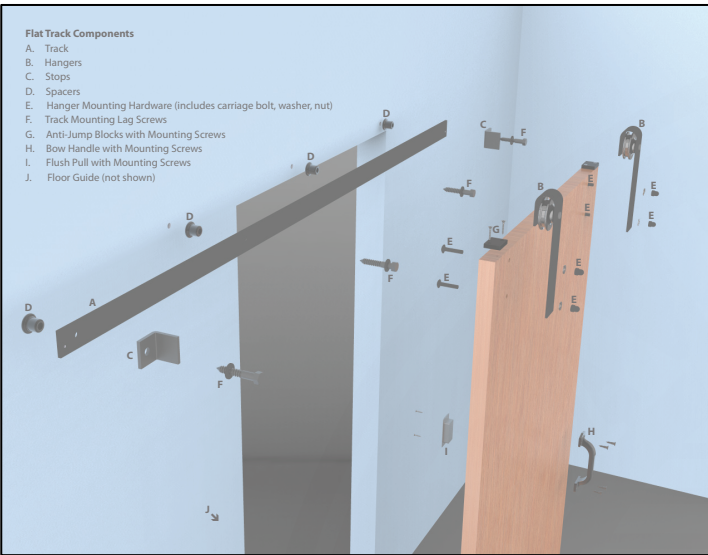


1017 Bahls Street
Danville, IL 61832
info@doorhdwe.com
www.doorhdwe.com
888-442-4572

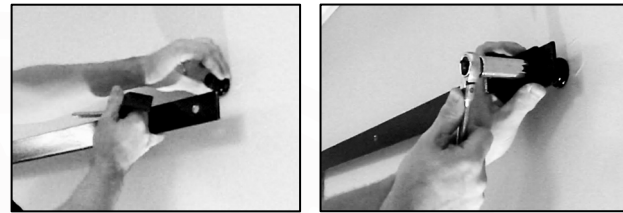
FLAT TRACK
BY LEATHERNECK HARDWARE



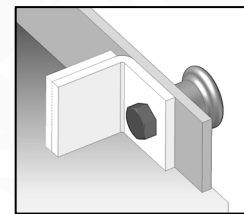
info@doorhdwe.com
www.doorhdwe.com



Step 1
Identify all the components of the Flat Track Hardware set. Review the exploded view diagram to better visualize the install.



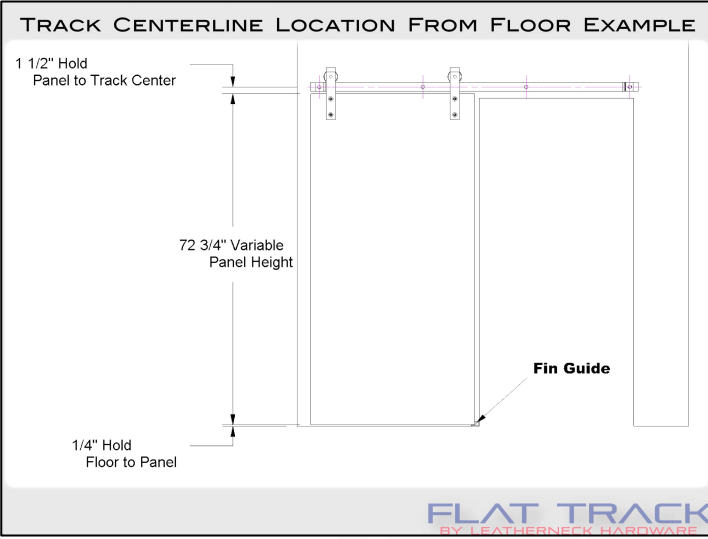
Step 5
Hang the track from the two end holes. Place the spacer (with the flange side against the wall) between the track and the wall. Insert the lag bolt with the door stop on the outside of the track.



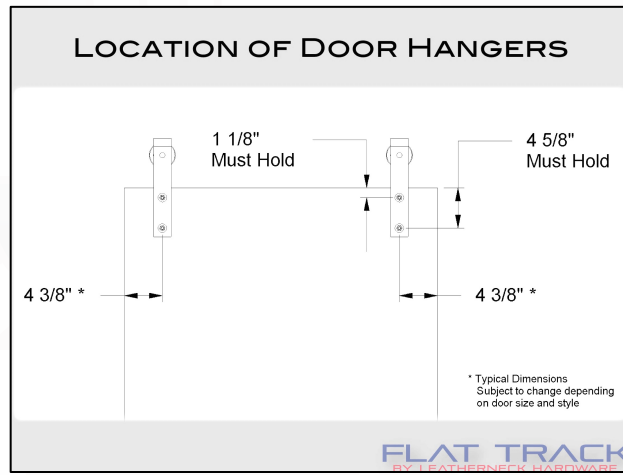
Step 2
Identify track header material to determine the correct fasteners to use.



Step 6
Once hung, drill the remaining holes using the spacer as a guide and fasten down the lag bolts.



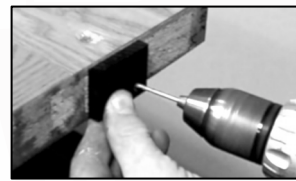
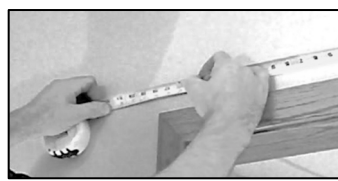
Step 3
Locate the vertical centerline of the track using this formula:
 $1 \frac{1}{2}''$
 +Panel Height
 +Floor Spacing
 =Centerline of Track From Floor



Step 7
Locate the position of the door hangers according to desired spacing. Refer to the drawing for details. Once located, drill door for hangers.



Step 4
Using the track centerline number, measure from the floor up to mark the height. Measure horizontally from the door jamb to get the position for the 1st hole. Level across from the 1st hole to locate the end hole. Once located, drill the two end holes.



Anti-Jump Block Sold Separately

Step 8 (If Included)
Before attaching the hangers, pre-drill for the anti-jump blocks. Run the screws in and out for ease of installation after mounting the door.

