

Kwikset®

NEW PUSH BUTTON LEVER

NOW AVAILABLE IN SATIN NICKEL & VENETIAN BRONZE



Securely re-key in seconds.

GREAT FOR:

OFFICE



MULTI-FAMILY



RETAIL



Features SmartKey® Re-key Technology
with BumpGuard™ Protection

ANSI/BHMA Grade 2 & 3 Certified Security

ADA Compliant





Specifications:

KINGSTON LEVER

ANSI/BHMA	Grade 2 Certified
Door Prep	Crossbore 2-1/8" Edge Bore 1"
Backset	Adjustable to 2-3/8" or 2-3/4"
Door Thickness	1-3/8" – 1-3/4" standard
Cylinder	SmartKey or Pin & Tumbler
Latch	Adjustable to 2-3/8" or 2-3/4" Specify round corner or square corner, WFL.
Strikes	2-1/4" full lip UL. Specify round corner or square corner. Other options include 2-3/4" T-Strike and 4-7/8" ASA.
Bolt	1/2" throw
Door Handling	Reversible for right or left-hand doors.
ADA	Lever functions satisfy 4.13.9 ADA requirements.
UL	Meets UL 3 hour fire rating for all functions
Warranty	Lifetime Mechanical, 5 Year Finish

CARSON LEVER

ANSI/BHMA	Grade 3 Certified
Door Prep	Crossbore 2-1/8" Edge Bore 1"
Backset	Adjustable to 2-3/8" or 2-3/4"
Door Thickness	1-3/8" – 1-3/4" standard
Cylinder	SmartKey or Pin & Tumbler
Latch	Adjustable to 2-3/8" or 2-3/4" Specify round corner or square corner, WFL.
Strikes	2-1/4" full lip UL. Specify round corner or square corner. Other options include 2-3/4" T-Strike and 4-7/8" ASA.
Bolt	1/2" throw
Door Handling	Reversible for right or left-hand doors.
ADA	Lever functions satisfy 4.13.9 ADA requirements.
UL	Meets UL 3 hour fire rating for all functions.
Warranty	Lifetime Mechanical, 5 Year Finish

Functions:

Grade 2

721 Hall/Closet

733 Bed/Bath

756 Keyed Entry

781 Storeroom

788 Half Dummy

Grade 3

407 Hall/Closet

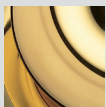
408 Bed/Bath

438 Keyed Entry

439 Storeroom

488 Half Dummy

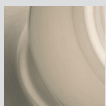
AVAILABLE FINISHES:



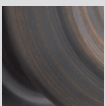
3 Polished Brass



26D Satin Chrome



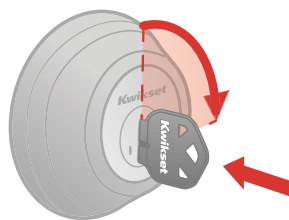
15 Satin Nickel



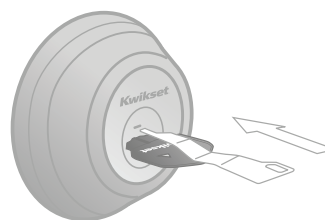
11P Venetian Bronze

RE-KEY IN 3 EASY STEPS

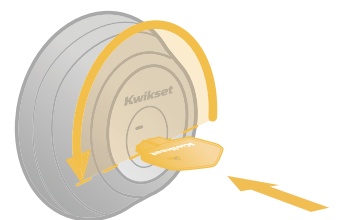
You must have your functioning key & the learn tool for the system to work.



1 Insert functioning key & turn 1/4 turn clockwise.



2 Insert & remove the SmartKey learn tool. Remove functioning key.



3 Insert new key & turn 1/2 turn counter-clockwise. Done. *Your lock is now re-keyed!*