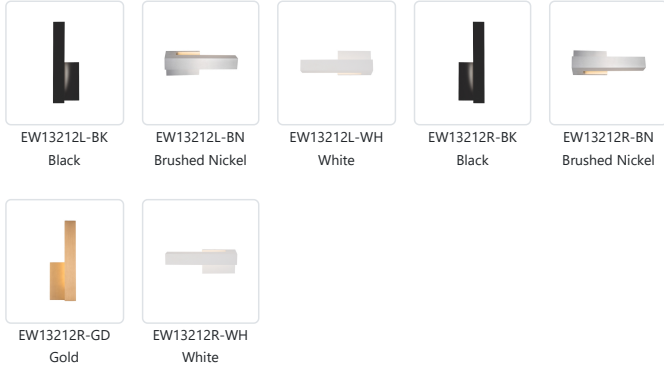




DESCRIPTION

Bold and sophisticated the Warner wall sconce is a versatile example of reductive geometric design. The monolithic machined lamp head showcases the refined finish treatment on the substantial planar surfaces. The rectangular backplate is partially illuminated by the light source and serves to augment the material as focal point. Available in two asymmetric designs and multiple mounting orientations the fixture is conditionally adaptive.



EW13212L-BK Black
EW13212L-BN Brushed Nickel
EW13212L-WH White
EW13212R-BK Black
EW13212R-BN Brushed Nickel
EW13212R-GD Gold
EW13212R-WH White

SPECIFICATION DETAILS

* For custom options, consult factory for details.

Fixture Dimensions	W4-1/4" x H12" x E3-3/4"
Light Source	LED
Wattage	17W
Total Lumens	1200lm
Delivered Lumens	BN-451lm; GD-398lm; WH-486lm;
Voltage	120V
Color Temperature	3000K
CRI (Ra)	>90
Optional Color Temps	2700K - 5000K Available, Minimum Order Quantities Apply
LED Rated Life	50,000 hours
Dimming	100% - 10%, ELV Dimmer (Not Included)
Diffuser Details	Frosted Glass Diffuser
Location	Wet Location (GD-Gold finish dry location only)
Warranty	5 Years
ADA Compliant	Yes
Canopy Dimensions	W4-1/2" x H6" x E1/2"

