

# NORFOLK 601432-LED

WALL

PROJECT



## DESCRIPTION

LED cylinder shaped up/down wall sconce with acrylic discs. Metal details in white, black, brushed nickel or chrome finish, and is equipped with our powerful 120V AC LED technology,



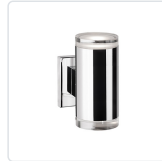
601432BK-LED  
Black



601432WH-LED  
White



601432BN-LED  
Brushed Nickel

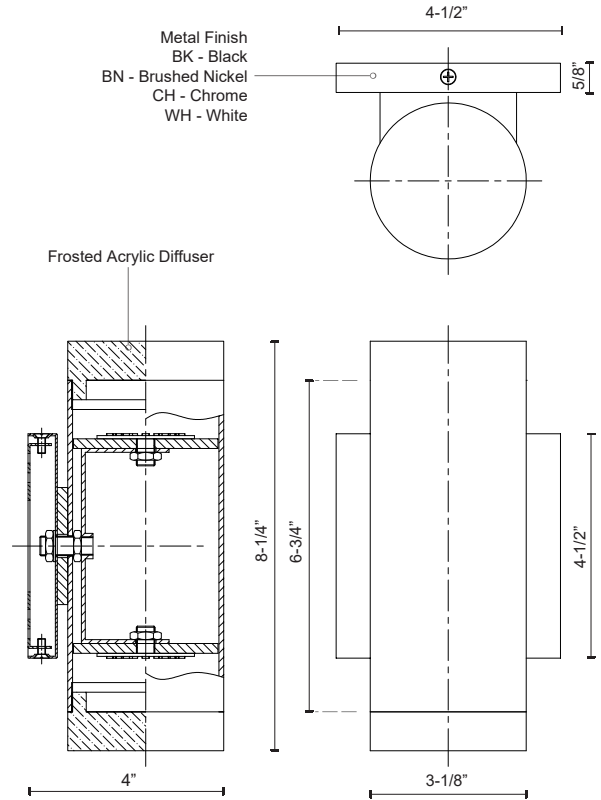


601432CH-LED  
Chrome

## SPECIFICATION DETAILS

\* For custom options, consult factory for details.

<b>Fixture Dimensions</b>	W3-1/8" x H8-1/4" x E4"
<b>Light Source</b>	LED
<b>Wattage</b>	19W
<b>Total Lumens</b>	1200lm
<b>Delivered Lumens</b>	BK-705lm; BN-767lm; CH-868lm;
<b>Voltage</b>	120V
<b>Color Temperature</b>	3000K
<b>CRI (Ra)</b>	>90
<b>Optional Color Temps</b>	2700K - 5000K Available, Minimum Order Quantities Apply
<b>LED Rated Life</b>	50,000 hours
<b>Dimming</b>	100% - 10%, ELV Dimmer (Not Included)
<b>Diffuser Details</b>	Frosted acrylic diffuser
<b>Location</b>	Dry
<b>Warranty</b>	5 Years
<b>Canopy Dimensions</b>	W4-1/2" x H4-1/2" x E5/8"



# KUZCO

19054 28TH AVENUE  
SURREY - BC V3Z 6M3  
CANADA

WWW.KUZCOLIGHTING.COM

COMMENT

