



INSTALLATION MANUAL

Seda™ Single Lever Vessel Faucet

FVS-1820

Thank you for your purchase

We would like to take this opportunity to thank you for choosing Kraus. We hope that you are completely satisfied with your purchase, and enjoy it for years to come. If you have any questions, or require technical assistance, please contact us at 800.775.0703 and one of our representatives will be happy to help.

For more information about Kraus products, please visit:

www.kraususa.com

In order to activate your warranty and get faster access to customer support, please register your new Kraus product at:

www.kraususa.com/registration

Sincerely,

Kraus USA Customer Service

Prior to Installation:

- Make sure you have all necessary parts by checking the diagram and parts list. If any part is missing or damaged, please contact Kraus Customer Service at 800-775-0703 for a replacement
- Turn off the hot and cold water supply at the angle stops and turn on the old faucet to release any built up pressure. Remove existing faucet. Clean sink or countertop to remove any debris, plumber's putty, or silicone
- Place bucket under angle stops. Turn on angle stops to flush any debris prior to installing new plumbing. Shut off angle stops
- Pre-drilled hole size requirement: 1 3/8" (min)
- Max countertop thickness: 1 3/8"

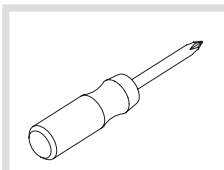
For technical assistance or replacement parts, please contact Kraus Customer Service and one of our representatives will be happy to help:

Toll-Free: 800-775-0703 or Customerservice@kraususa.com

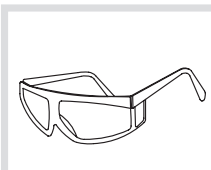
Tools you will need:



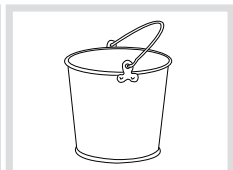
Adjustable Wrench



Phillips Screwdriver

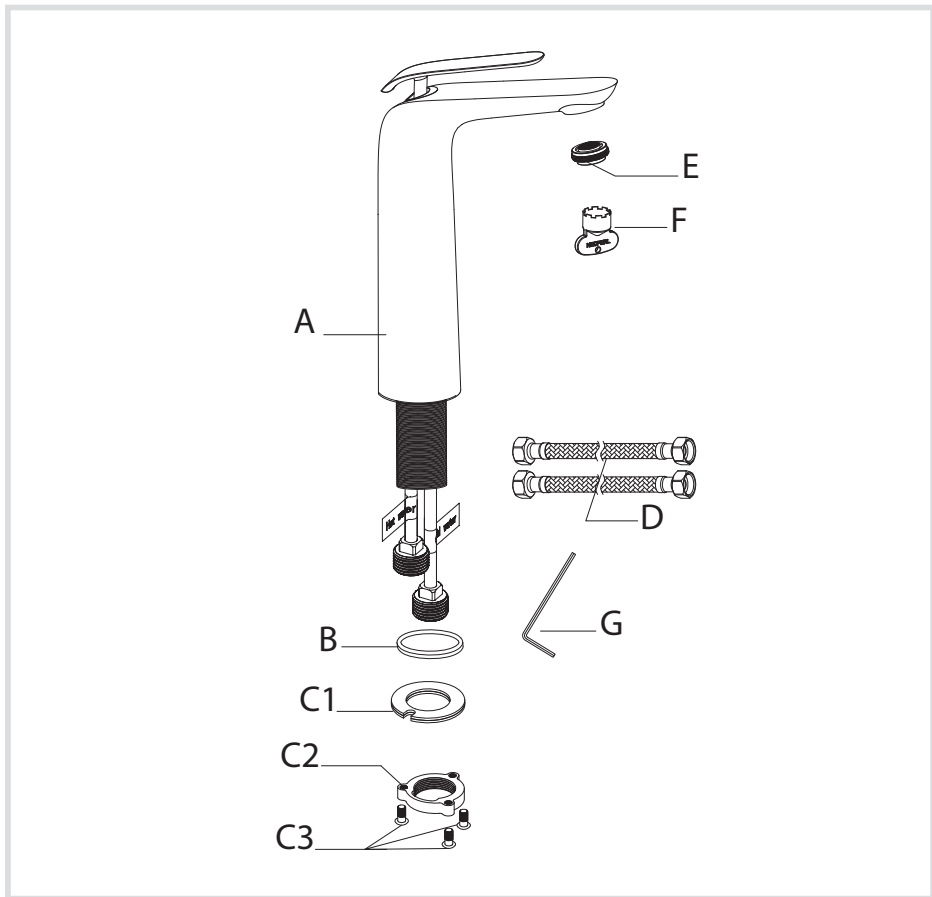


Safety Goggles



Bucket

Diagram and Parts List



A. Faucet Body

B. Base O-Ring

(factory-installed)

C. Mounting Hardware:

C1. Rubber & Metal O-Washer

C2. Mounting Nut

C3. Mounting Screws

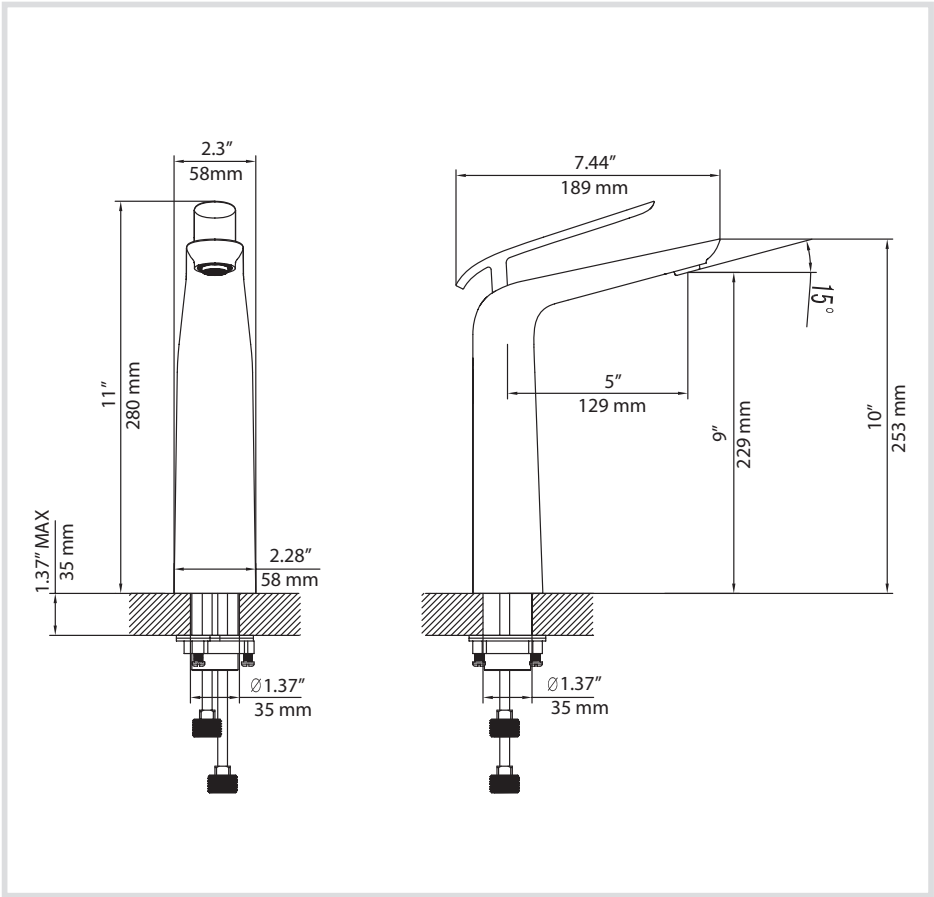
D. Hot & Cold Waterlines

E. Adjustable Aerator

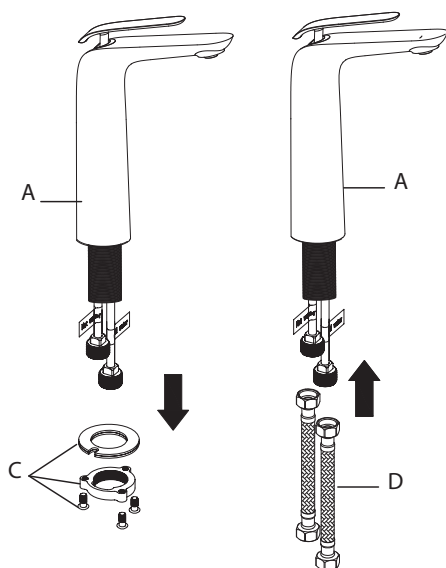
F. Aerator Key

G. Hex Wrench

Faucet Dimensions



Step 1: Remove mounting hardware and install waterlines

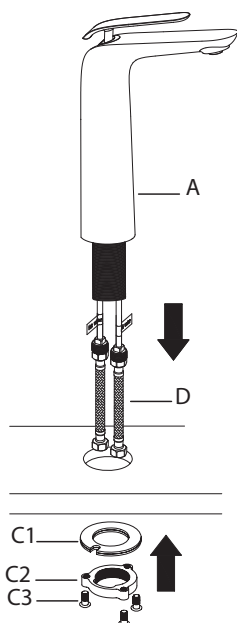


Remove mounting hardware (C) from faucet body (A). Place faucet body (A) on a soft cloth. Secure hot & cold waterlines (D) at the base of the faucet (hand-tighten, then secure with $\frac{1}{4}$ turn of adjustable wrench)

A. Hot Side: Left

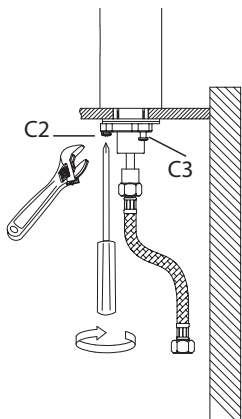
B. Cold Side: Right

Step 2: Install faucet



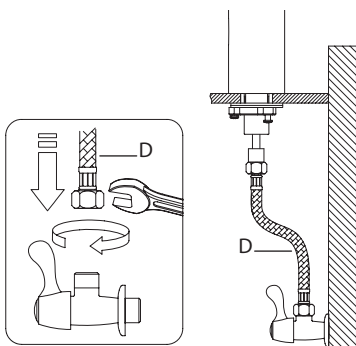
Install faucet body (A) through $1 \frac{3}{8}$ " hole in countertop, with base O-ring (B) and hot & cold waterlines (D) attached. Attach rubber & metal O-washer (C1) and mounting nut (C2) to threaded mounting pipe

Step 3: Secure faucet



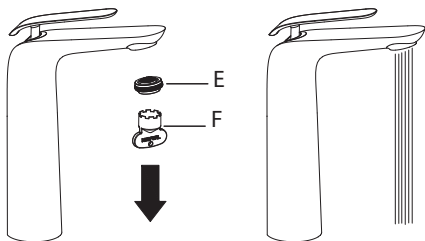
After adjusting direction of faucet body (A), tighten mounting nut (C2) with adjustable wrench. Secure mounting nut (C2) by tightening mounting screws (C3) with a Phillips head screwdriver

Step 4: Connect waterlines to main valve



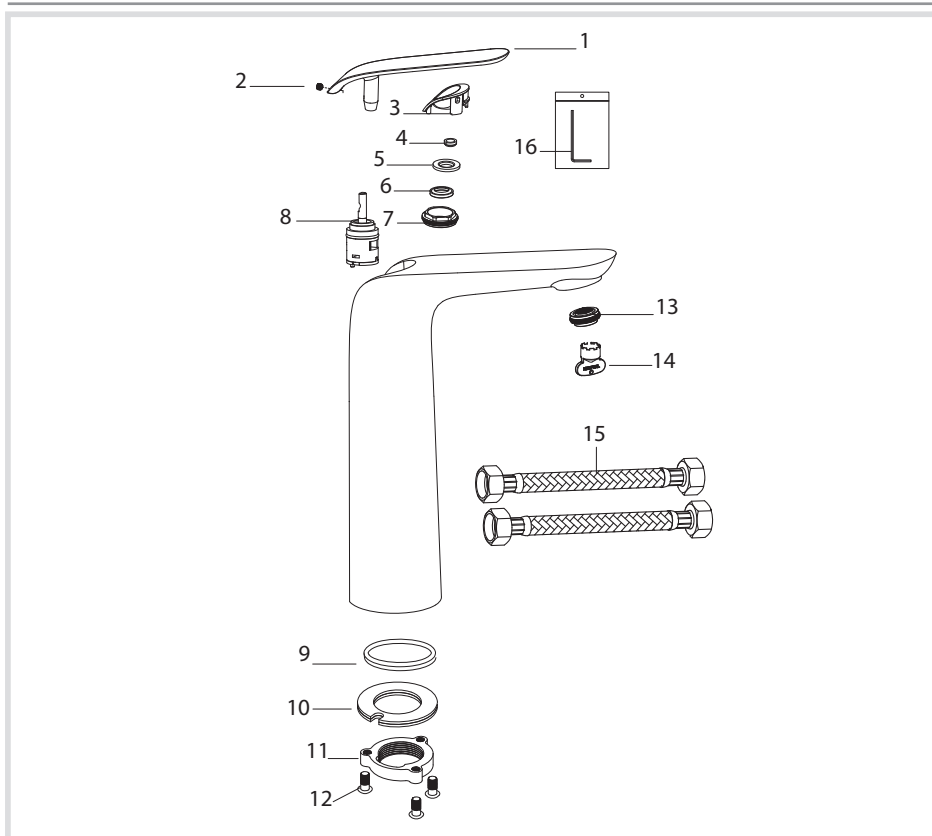
Thread hot & cold waterlines (D) onto angle stops and tighten with adjustable wrench until snug. Turn on angle stops and check for leaks (DO NOT TURN ON FAUCET)

Step 5: Flush faucet



Remove adjustable aerator (E) with aerator key (F). Turn water on for 1 minute to remove any debris. Reassemble aerator (E) and adjust to desired position

Replacement Part List - FVS-1820



1. Metal Handle
2. Set Screw
3. Cartridge Cover
4. Cartridge Sleeve
5. Metal O-Ring
6. Rubber Washer
7. Locking Nut
8. Cartridge

9. Base O-Ring
10. Rubber & Metal O- Ring
11. Mounting Nut
12. Mounting Screw
13. Adjustable Aerator
14. Aerator Key
15. Hot & Cold Waterlines
16. Hex Wrench

Trouble - Shooting

If you have followed the instructions carefully and your faucet still does not work properly, take the following corrective steps:

PROBLEM	CAUSE	ACTION
Leakage under the handle	Locking nut (7) has come loose	Loosen set screw (2) with hex wrench (17). Remove metal handle (1), cartridge cover (3), cartridge sleeve (4), metal o-ring (5) & rubber washer (6). Tighten locking nut (7) with wrench
Aerator drips or has inconsistent water flow pattern	Aerator (14) may be dirty or not seated properly	Unscrew aerator (14) with aerator key (15). Remove aerator (14) and clean out debris
Water will not shut off completely	Cartridge(8) may need to be adjusted or replaced	Loosen set screw (2) with hex wrench (17). Remove metal handle (1), cartridge cover (3), cartridge sleeve (4), metal o-ring (5) & rubber washer (6). Unscrew locking nut (7) with wrench. Remove cartridge (8). Check for cracks

Codes/Standards Applicable:



HELP LINE

Our customer service hours are Monday – Friday, 9am – 8pm EST.
Be sure to visit our website at www.kraususa.com

If you are a homeowner please contact a Kraus Customer Service Representative at:

Kraus USA, Inc.
12 Harbor Park Drive
Port Washington, NY 11050
Toll-free 800-775-0703
Customerservice@kraususa.com

If you are a plumbing contractor or trade professional please contact a Kraus Pro Representative at:

Kraus USA, Inc.
12 Harbor Park Drive
Port Washington, NY 11050
516-801-8955
Proservice@kraususa.com

If you are an Authorized Partner please contact a Partner Support Representative at:

Kraus USA, Inc.
12 Harbor Park Drive
Port Washington, NY 11050
516-801-8954
Partnersupport@kraususa.com

In requesting warranty service, please be ready to provide:

1. Proof of purchase.
2. A description of the problem.

Care & Maintenance

*To keep the product clean & shining, follow the steps below:

1. Rinse with clean water & dry with a soft cloth
2. Do not clean with soaps, acid, polish, abrasives, or harsh cleaners
3. Do not use cloth with a coarse surface
4. Unscrew the aerator and clean when necessary



*This installation manual is subject to change without further notice.

Download the Kraus Care & Maintenance Guide at:

<http://www.kraususa.com/maintenance>

Kräus®

www.kraususa.com

REGISTER YOUR PRODUCT TODAY

Receive Proof of Ownership

Access Customer Care & Installation Help

Get Exclusive Kraus Offers & Promotions



Scan to Register Online
or visit <http://www.kraususa.com/registration>

We're always looking for ways to improve.

Please take a moment to share your experience.
Visit <http://www.kraususa.com/review> to let us know what you think
about your new Kraus product.

Contact Us to Learn More
1.800.775.0703 / www.kraususa.com / customerservice@kraususa.com
Like & Follow KrausUSA

Download the Kraus Care & Maintenance Guide at:
<http://www.kraususa.com/maintenance>



Kräus®

www.kraususa.com