

Features

- Catalyzed conversion varnish provides a durable moisture-resistant finish.
- Frameless construction with full-overlay doors and drawers.
- Two doors and six drawers.
- Three-way adjustable slow-close door hinges with 110-degree opening capability for easy cabinet access.
- Optional adjustable shelf, rollout drawer, rollout tray (sold separately).
- Coordinates with other products in the Damask™ collection.
- Toe kick covers blemished or inconsistent flooring.
- Full-extension 18" depth drawers with slow-close under-mount slides for smooth opening.
- Solid wood drawers with dovetail construction.
- Door and drawer pulls are sold separately.

Material

- Solid wood and veneers.

Recommended Accessories

2893
2784
K- 5459 Bathroom Vanity Top
5425
K- 5441 Bathroom Vanity Top
K- 99686 Knob
K- 99689 Handle

Optional Accessories

99680
99679
K- 99665 Framed Mirror
K- 99681 Side Mount Electrical Outlets
K- 99682 General Storage
K- 99683 Makeup Storage
K- 99684 Drawer Dividers
K- 99672 Two-Drawer Bridge
K- 99668 Lap Drawer
K- 99676 Filler Strip
K- 99001 Mirrored Cabinet
K- 99007 Mirrored Cabinet
K- 99009 Mirrored Cabinet
99662
99678



Codes/Standards



CARB P2

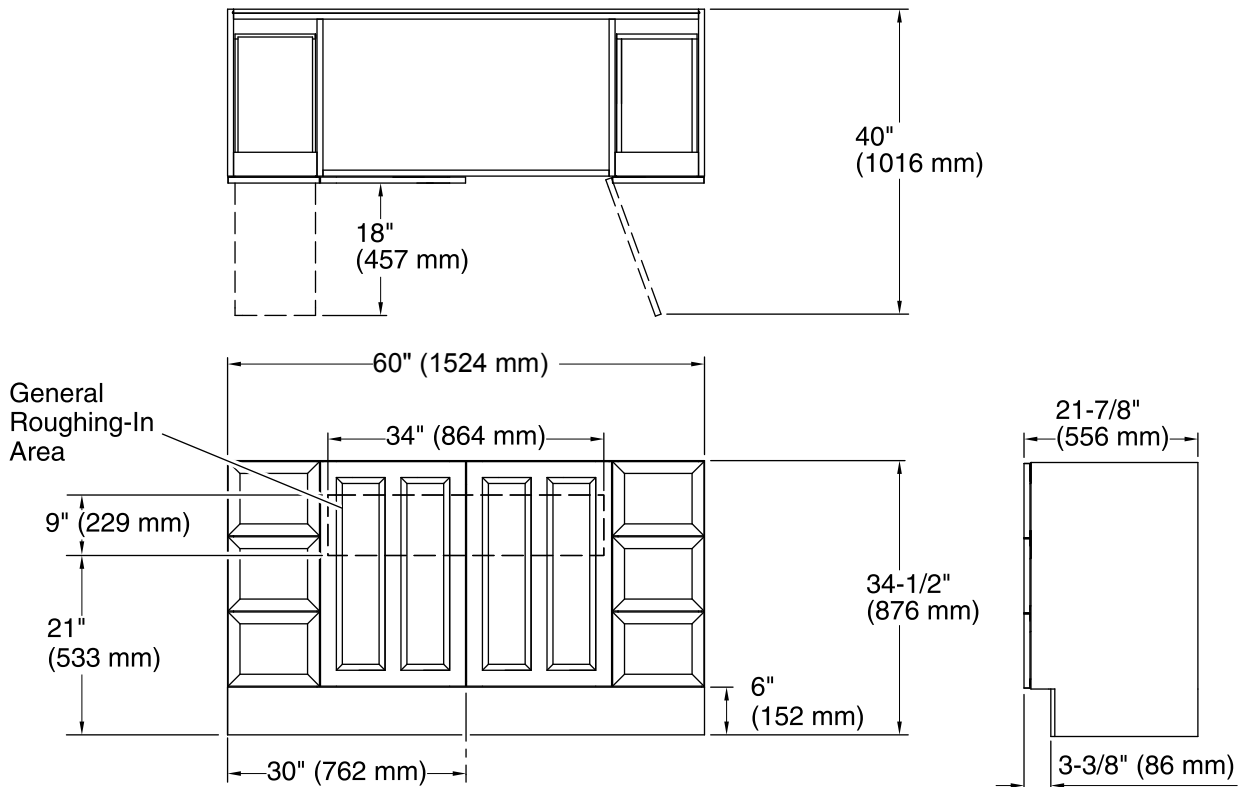
KOHLER® One-Year Limited Warranty

See website for detailed warranty information.

Available Color/Finishes

Color tiles intended for reference only.

| Color | Code | Description |
|--|------|-----------------|
|  | 1WA | Linen White |
|  | 1WF | Khaki White Oak |
|  | 1WD | Ramie Walnut |
|  | 1WG | Cherry Tweed |
|  | 1WB | Claret Suede |
|  | 1WC | Felt Grey |
|  | 1WE | Terry Walnut |
|  | 1WT | Mohair Grey |
|  | 1WU | Batiste Black |



Technical Information

All product dimensions are nominal.

Vanity type: Standard

Notes

Install this product according to the installation guide.

Decorative cabinet hardware is not supplied. Refer to the KOHLER bath accessories line for recommended cabinet hardware to complement your vanity.

Select the type of fastener based upon the wall material. Two 250 lb (113.4 kg) minimum load bearing fasteners are recommended.