

**Features**

- Articulating spout with 360° rotation offers superior clearance for filling pots on cooktops and ranges
- Single knob handle with main knob handle shutoff
- 3.2 gpm (12.1 lpm) flow rate at 60 psi (4.14 bar)
- KOHLER® ceramic disc valves exceed industry longevity standards for a lifetime of durable performance
- Coordinates with other products in the Components collection

**Material**

- Premium metal construction for durability and reliability
- KOHLER finishes resist corrosion and tarnishing

**Recommended Products/Accessories**

K-23723 Faucet cleaner



**Codes/Standards**










ASME A112.18.1/CSA B125.1  
NSF/ANSI/CAN 61  
NSF/ANSI/CAN 372  
All applicable US Federal and State material regulations

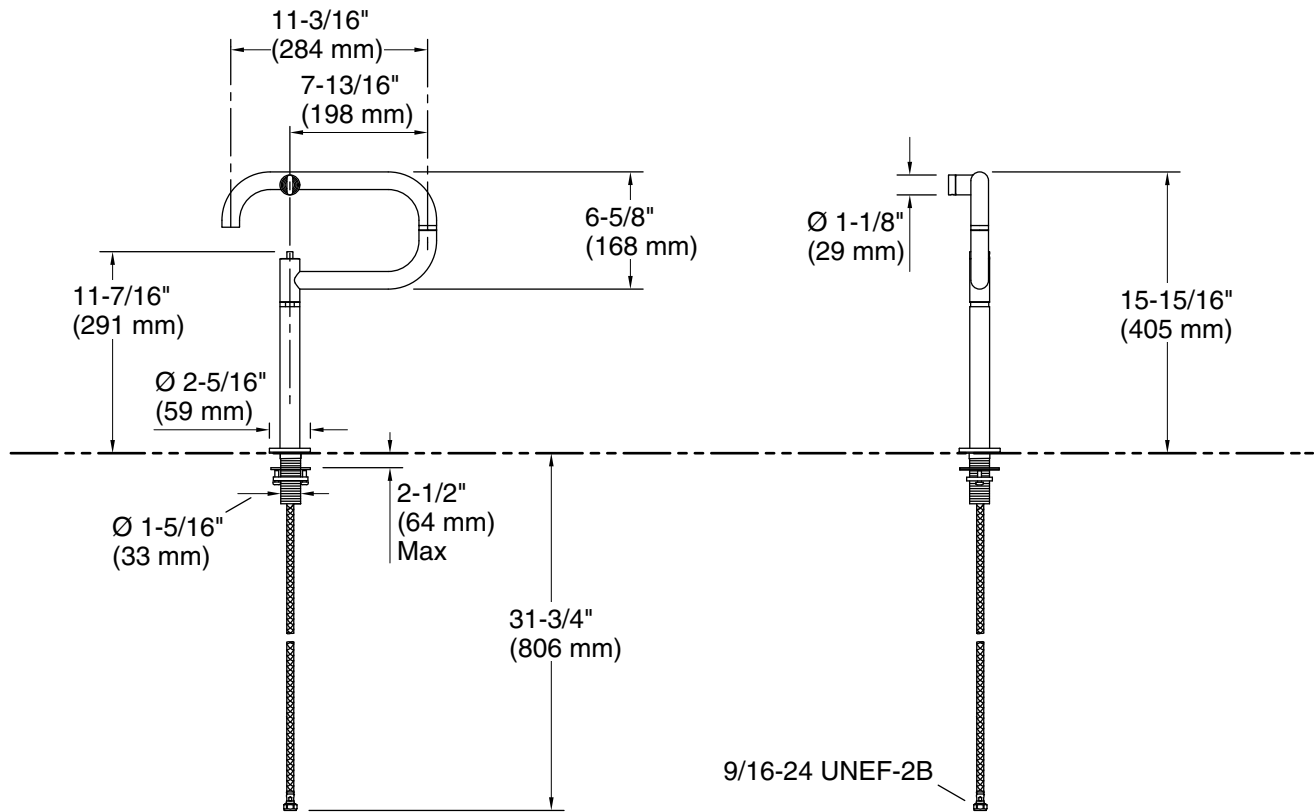
**KOHLER® Faucet Lifetime Limited Warranty**

See website for detailed warranty information.

**Available Colors/Finishes**

*Color tiles intended for reference only.*

| Color   | Code | Description                    |
|---|------|--------------------------------|
|  | CP   | Polished Chrome                |
|  | SN   | Vibrant® Polished Nickel       |
|  | AF   | Vibrant® French Gold           |
|  | VS   | Vibrant® Stainless             |
|  | BV   | Vibrant® Brushed Bronze        |
|  | BL   | Matte Black                    |
|  | 2MB  | Vibrant® Brushed Moderne Brass |
|  | BMB  | Matte Black with Moderne Brass |
|  | TT   | Vibrant Titanium               |



## Technical Information

All product dimensions are nominal.

Faucet flow rate: 3.5 gal/min (13.2 l/min)

Drain included: No

## Notes

Install this product according to the installation instructions.