

NOTE:
DIMENSIONS IN [] ARE ENGLISH STANDARD EQUIVALENTS

UNLESS OTHERWISE SPECIFIED:
ALL DIMENSIONS IN MILLIMETERS
GENERAL TOLERANCES:
XX ±0.25
X.X ±1.0
X ±1.5
ANGLES ±0°30'

DO NOT SCALE.
THIS ASSEMBLY OR PART MUST COMPLY WITH PEP-RML-001.
REFERENCE CAD MODEL FOR UNSPECIFIED DIMENSIONS.

REV	DATE	CHANGE NUMBER	ON COMPOSITE DWGS, SEE PART NO. FOR REVISION LEVEL □ INDICATES PART NUMBERS AFFECTED BY LATEST DRAWING REVISION	BY
-	27JAN2021	CT209473	NEW DRAWING	RVM

THIRD ANGLE PROJECTION

MAJOR = 0
CRITICAL = 0
CHARACTERISTICS COMPLY WITH KPS-80022

DRAWN BY RVM DATE:
APPROVED BY TAS 27JAN2021

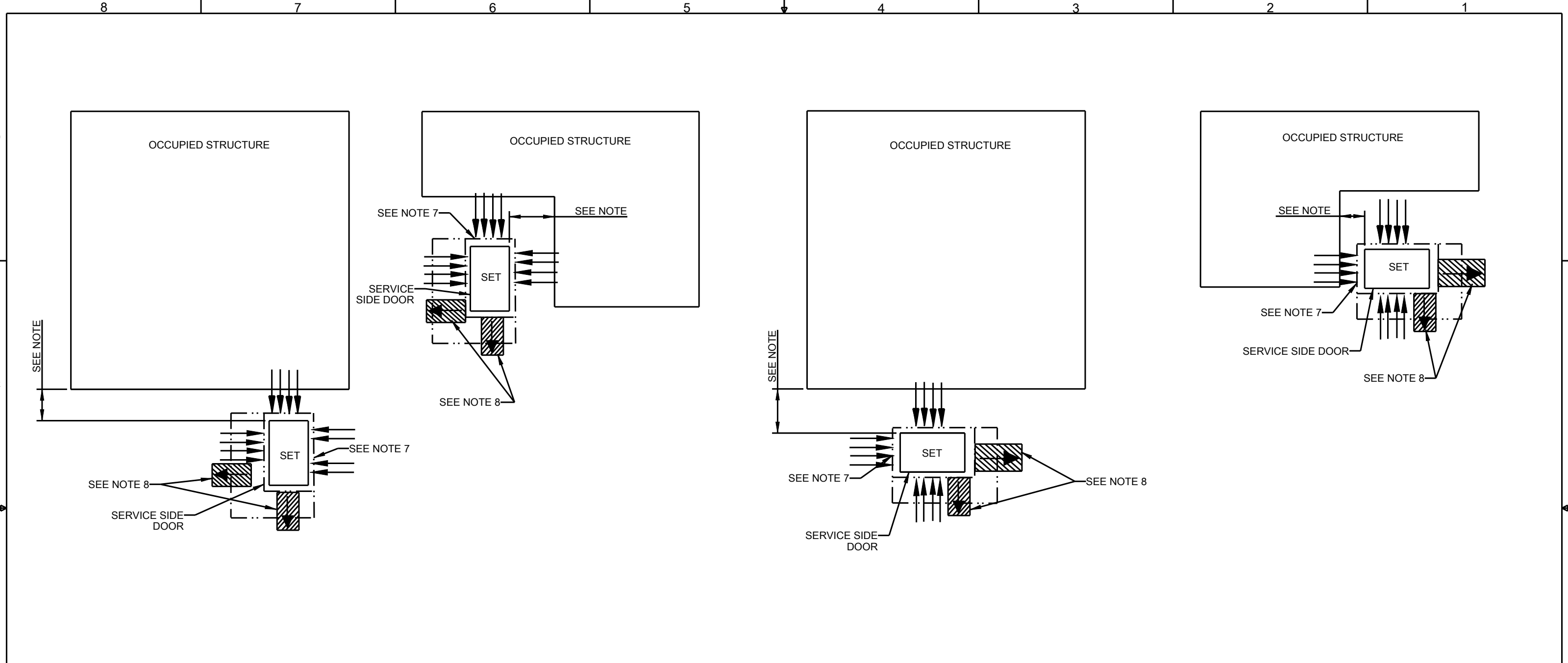
KOHLER.
KOHLER, WISCONSIN 53044

SCALE: 0.050 SHEET SIZE: B SHEET 1 OF 2

TITLE:
**DIMENSION PRINT,
48RCLC/60RCLB**

DWG NO.: **ADV-9760**

48 RCLC/ 60 RCLB



INSTALLATION GUIDELINES

- 1) EXHAUST IS AIMED AWAY FROM OR PARALLEL TO THE STRUCTURE.
- 2) EXHAUST IS NOT DIRECTED AT PLAY AREAS, PATIOS OR OTHER AREAS WHERE PEOPLE CONGREGATE.
- 3) THE NEAREST WINDOW, VENT, DOOR OR SIMILAR STRUCTURE OPENING IS AT LEAST 5 FEET FROM THE EXHAUST END OF THE GENERATOR.
- 4) GENERATOR SET MUST BE INSTALLED A MINIMUM OF 18 INCHES FROM STRUCTURE PER NFPA 37, HOWEVER, ACTUAL DISTANCE MAY DIFFER BASED ON STATE AND LOCAL CODES.
- 5) WINDOWS & DOORS ON ADJACENT WALLS ARE CLOSED.
- 6) FURNACE AND OTHER SIMILAR INTAKES ARE AT LEAST 10 FEET FROM EXHAUST END OF GENERATOR.
- 7) 4" THICK CONCRETE PAD EXTENDING 6" BEYOND GENSET ON ALL SIDES.
- 8) NO PLANTS, SHRUBS OR OTHER COMBUSTIBLES ALLOWED IN CLEARANCE AREA. (MINIMUM 8 FT. FROM EXHAUST END).
- 9) SENSITIVE PLANTS, PATIO FURNITURE, ETC. ARE AT LEAST 8 FEET FROM EXHAUST END OF SET.
- 10) REFER TO OWNERS MANUAL FOR OTHER INSTALLATION CONSTRAINTS.

REV	DATE	CHANGE NUMBER	ON COMPOSITE DWGS, SEE PART NO. FOR REVISION LEVEL □ INDICATES PART NUMBERS AFFECTED BY LATEST DRAWING REVISION	BY
-	27JAN2021	CT209473	NEW DRAWING	RVM

UNLESS OTHERWISE SPECIFIED:
 ALL DIMENSIONS IN MILLIMETERS
 GENERAL TOLERANCES:
 X.XX ±0.25
 X.X ±1.0
 X ±1.5
 ANGLES ±0°30'

SURFACE FINISH
 ✓ MAX.

THIRD ANGLE PROJECTION

MAJOR ○ = 0
 CRITICAL ● = 0
 CHARACTERISTICS COMPLY WITH
 KPS-60022

DRAWN BY RVM DATE: 27JAN2021
 APPROVED BY TAS

DO NOT SCALE.
 THIS ASSEMBLY OR PART MUST COMPLY WITH PEP-RML-001. REFERENCE CAD MODEL FOR UNSPECIFIED DIMENSIONS.

KOHLER.
 KOHLER, WISCONSIN 53044

SCALE: 0.050 SHEET SIZE: B SHEET 2 OF 2

TITLE:
**DIMENSION PRINT,
 48RCLC/60RCLB**

DWG NO.: **ADV-9760**

48 RCLC/ 60 RCLB