

## Features

- Catalyzed conversion varnish provides a durable moisture-resistant finish.
- One door and one drawer on right.
- Frameless construction with full-overlay door and drawer.
- Three-way adjustable slow-close door hinges with 110° opening capability for easy cabinet access.
- Full-extension 18" (457 mm) depth drawer with soft-close undermount slides for smooth opening.
- Solid wood drawer with dovetail construction.
- Wall-hung design offers a clean, streamlined look.
- Cabinet knobs and pulls are sold separately.
- Combines with Ceramic/Impressions®, Solid/Expressions®, and Iron/Impressions® vanity tops (sold separately) for a complete vanity.
- Customize your storage with optional accessories such as shelves, trays, drawer dividers, and medicine cabinets (sold separately).

## Material

- Solid wood and veneers.
- Wood is a living material, and its beauty is enhanced by natural variations in grain, color, and pattern. No two pieces of wood are exactly the same, and the color will change with age, temperature, and exposure to light.
- The nature of wood grain can cause variations in stain depth. Our expert craftspeople hand-apply the stain to blend these variations.

## Recommended Products/Accessories

K-5422 31" vanity-top w/single Verticyl® oval cutout  
 K-5451 Bathroom Vanity Top - Side Splash  
 K-99684 Drawer divider package for KOHLER Tailored® vanities  
 K-99665 Framed Mirror  
 K-99689 3" drawer pull  
 K-99682 General storage package for KOHLER Tailored® vanities  
 K-99566 In-drawer electrical outlets for vanities  
 K-99688 Bar Pull  
 K-99668 Lap Drawer  
 K-99683 Makeup storage package for KOHLER Tailored® vanities  
 K-99001 Medicine Cabinet  
 K-99567 Roll-out appliance storage for vanities  
 K-99681 Electrical outlets for KOHLER Tailored® vanities  
 K-2779-1 Vanity Top Bathroom Sink  
 K-14661-4 Widespread Bathroom Sink Faucet  
 K-23736 Furniture polish

## Optional Products/Accessories

K-99676 Filler strip for KOHLER Tailored® vanities

1-800-4KOHLER (1-800-456-4537)

Kohler Co. reserves the right to make revisions without notice to product specifications.

For the most current Specification Sheet, go to [www.kohler.com](http://www.kohler.com).

5-29-2021 08:43 - US/CA



## Codes/Standards

EPA TSCA Title VI  
CARB P2

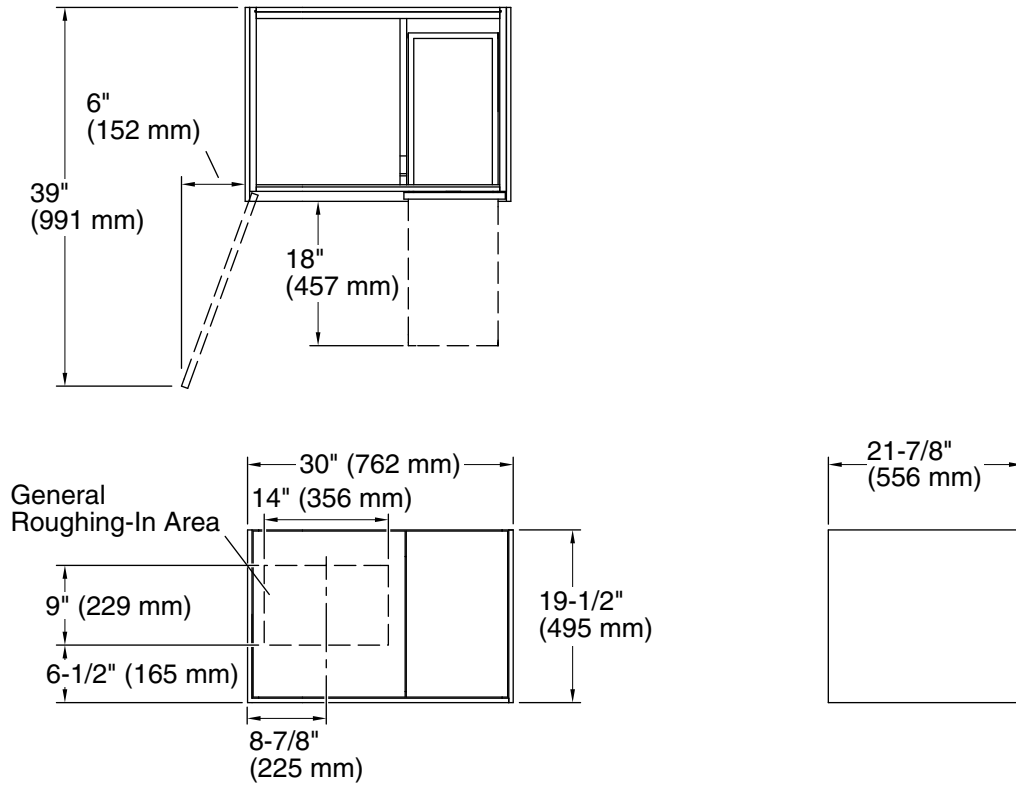
## KOHLER® One-Year Limited Warranty

See website for detailed warranty information.

## Available Colors/Finishes

*Color tiles intended for reference only.*

Color	Code	Description
	1WA	Linen White
	1WM	Walnut Flax
	1WT	Mohair Grey



## Technical Information

All product dimensions are nominal.

Vanity type: Wall-mount

## Notes

Install this product according to the installation guide.

Decorative cabinet hardware is not supplied. Refer to the KOHLER bath accessories line for recommended cabinet hardware to complement your vanity.

Select the type of fastener based upon the wall material. Two 500 lb (227 kg) minimum load bearing fasteners are recommended.