



**Brazn®**  
23" rectangular vessel bathroom sink  
**K-21059-1**

### Features

- Brass drain and color-matched brass drain cover
- Single faucet hole
- With overflow
- Rectangular basin
- Single faucet hole; requires faucet with lift rod

### Material

- Fireclay

### Installation

- Vessel



**ADA** **CSA B651** **OBC**

### Codes/Standards

ASME A112.19.2/CSA B45.1

ADA

ICC/ANSI A117.1

CSA B651

OBC

### KOHLER® One-Year Limited Warranty

See website for detailed warranty information.

### Available Colors/Finishes

*Color tiles intended for reference only.*

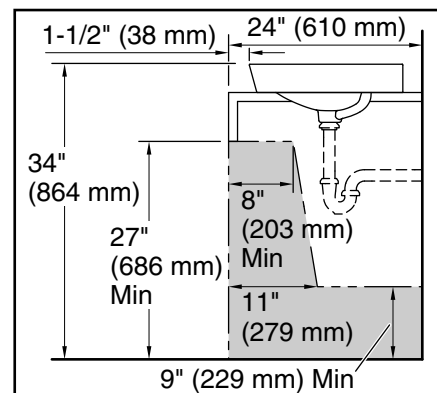
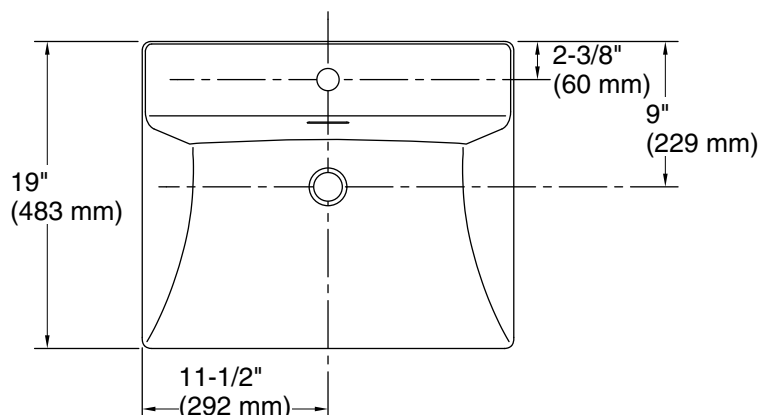
Color	Code	Description
-------	------	-------------



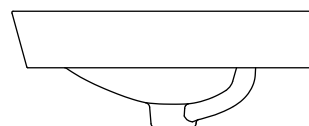
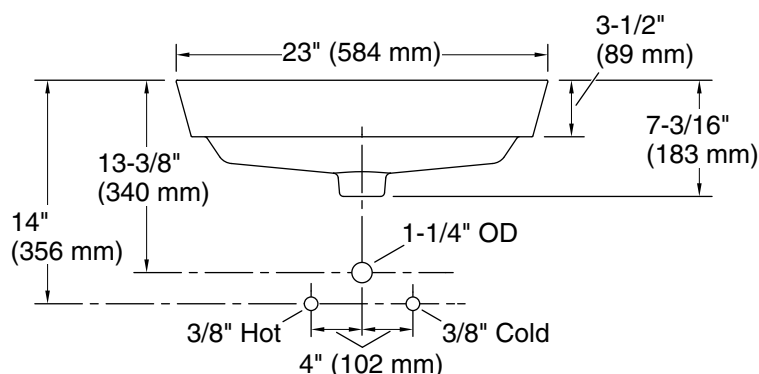
0	White
---	-------



HB1	Honed Black
-----	-------------



**Recommended ADA Installation**



## Technical Information

All product dimensions are nominal.

Basin configuration: Single Bowl

Bowl area (Only): Length: 19-3/16" (487 mm)  
Width: 11-1/4" (286 mm)  
Bowl depth: 5-5/16" (135 mm)

Drain hole: 1-3/4" (45 mm)

Template: 1483025-7, required, included

## Notes

Install this product according to the installation instructions.

**NOTICE:** Countertop manufacturer or cutter must use the cut-out template provided with the product, or a current one provided by Kohler Co. (call 1-800-4-KOHLER). Kohler Co. is not responsible for cutout errors when the incorrect cut-out template is used.

ADA, OBC, CSA B651 compliant when installed to the specific requirements of these regulations.