

### Features

- Catalyzed conversion varnish finish provides a durable moisture-resistant finish.
- Frameless construction with full-overlay door and drawers.
- Two doors and a center bank of two drawers with a split top drawer
- Three-way adjustable slow-close door hinges with 110-degree opening capability for easy cabinet access.
- Optional accessories available (sold separately).
- Coordinates with other products in the Damask™ collection.
- Full-extension 18" depth drawer with slow-close under-mount slides for smooth opening.
- Solid wood drawers with dovetail construction.
- Door and drawer pulls are sold separately.

### Material

- Solid wood and veneers.

### Optional Accessories

- K-99681 Side Mount Electrical Outlets
- K-99682 General Storage
- K-99683 Makeup Storage
- K-99684 Drawer Dividers
- K-99686 Knob
- K-99689 Handle
- K-99675 Medicine Cabinet Wood Side Kit
- K-99665 Framed Mirror
- K-99676 Filler Strip
- K-99668 Lap Drawer
- K-99672 Two-Drawer Bridge
- K-99738 Appliance Tray
- K-99567 Roll-out Hot Appliance Storage
- K-99566 In-drawer Electrical Outlet



### Codes/Standards






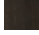


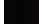
CARB P2

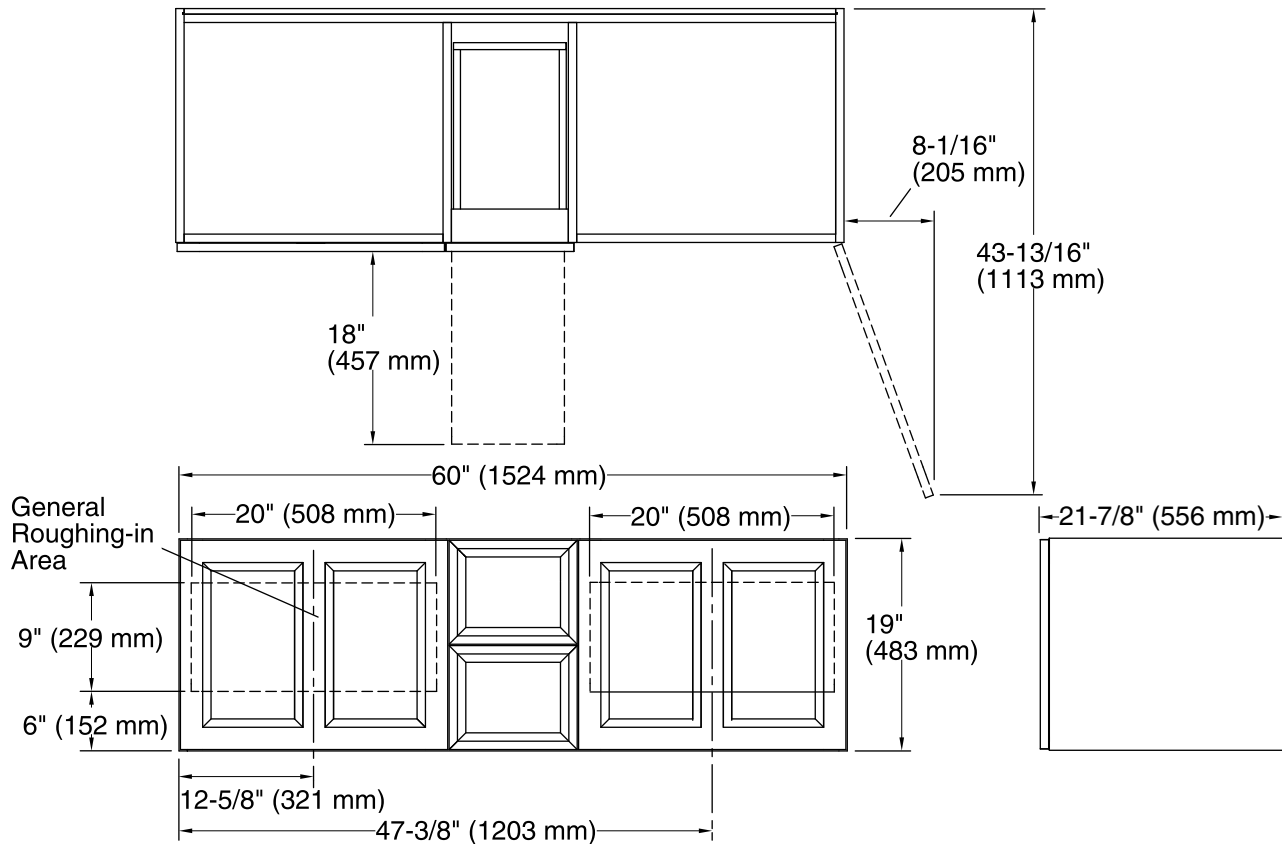
### KOHLER® One-Year Limited Warranty

See website for detailed warranty information.

### Available Color/Finishes

*Color tiles intended for reference only.*

Color	Code	Description
	1WA	Linen White
	1WF	Khaki White Oak
	1WD	Ramie Walnut
	1WG	Cherry Tweed
	1WB	Claret Suede
	1WC	Felt Grey
	1WE	Terry Walnut
	1WT	Mohair Grey
	1WU	Batiste Black



## Technical Information

All product dimensions are nominal.

Vanity type: Wall-mount

## Notes

Install this product according to the installation guide.

Decorative cabinet hardware is not supplied. Refer to the KOHLER bath accessories line for recommended cabinet hardware to complement your vanity.

To properly support the weight of the vanity and sink, secure to stud framing or 2x6 bracing behind the finished wall.

Select 500 lb (227 kg) load bearing 5/16" lag bolts with a length to clear obstacles in the wall and 5/16" washers.

Plan for electrical service if installing the optional electrical strip. Any electrical accessory components must be connected to a circuit protected by a Ground-Fault Circuit-Interrupter (GFCI) or Residual Current Device (RCD).