

Features

- Catalyzed conversion varnish provides a durable moisture-resistant finish.
- Frameless construction with full-overlay doors.
- Two doors with three-way adjustable slow-close door hinges with 110-degree opening capability for easy cabinet access.
- Optional accessories available (sold separately).
- Coordinates with other products in the Damask™ collection.
- Door pulls are sold separately.
- Accepts Tailored Vanity Collection legs (sold separately).



Recommended Accessories

K-99686 Knob
K-99689 Handle
K-2779-1 Vanity Top Bathroom Sink
K-2779-8 Vanity Top Bathroom Sink
K-99675 Medicine Cabinet Side Kit
K-5422 Bathroom Vanity Top
K-5437 Bathroom Vanity Top
K-5456 Bathroom Vanity Top
K-2796-1 Vanity Top Bathroom Sink
K-2796-8 Vanity Top Bathroom Sink
K-3049-1 Vanity-top Bathroom Sink
K-3049-4 Vanity-top Bathroom Sink
K-3049-8 Vanity-top Bathroom Sink

Optional Accessories

K-99665 Framed Mirror
K-99676 Filler Strip
K-99668 Lap Drawer
K-99672 Two-Drawer Bridge
K-99567 Roll-out Hot Appliance Storage
K-99681 Side Mount Electrical Outlets
K-99662-15 Medicine Cabinet Surround
K-99662-24 Medicine Cabinet Surround
K-5448 Bathroom Vanity Top - Back splash
K-5451 Bathroom Vanity Top - Side Splash
K-5445 Bathroom Vanity Top - Back Splash

Codes/Standards






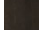


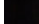
CARB P2

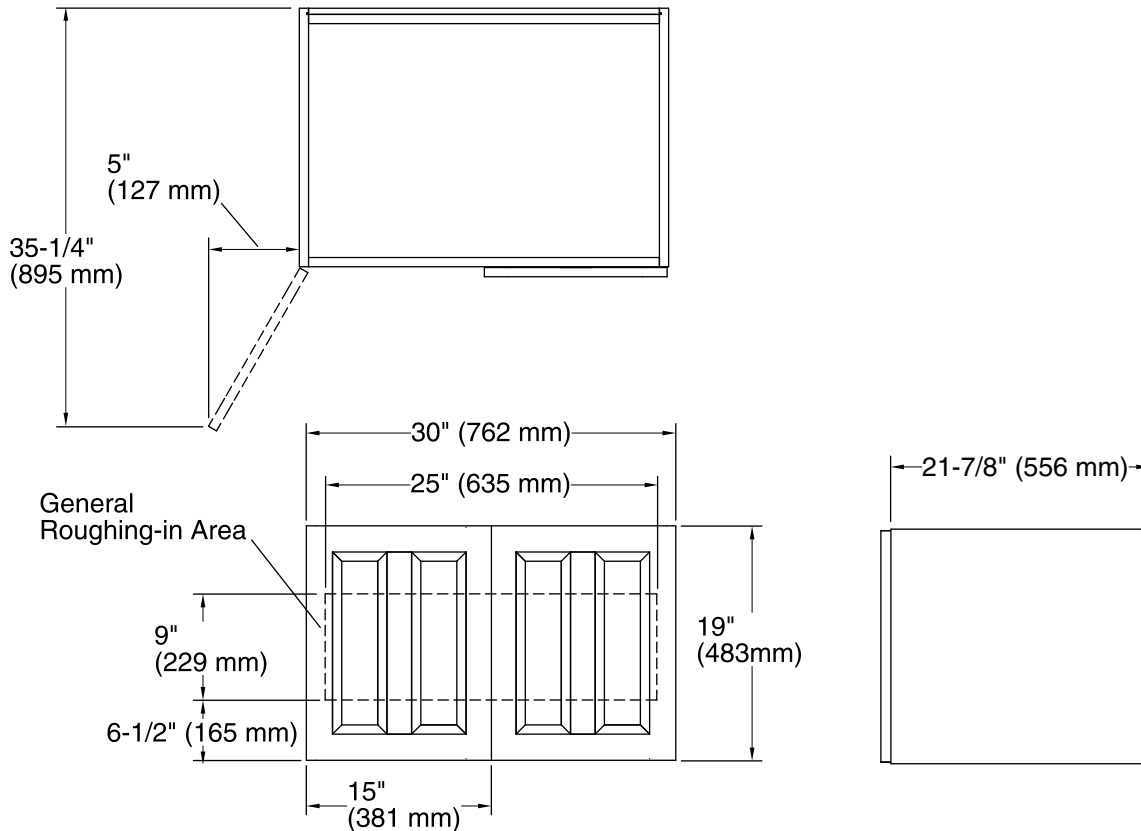
KOHLER® One-Year Limited Warranty

See website for detailed warranty information.

Available Color/Finishes

Color tiles intended for reference only.

Color	Code	Description
	1WA	Linen White
	1WF	Khaki White Oak
	1WD	Ramie Walnut
	1WG	Cherry Tweed
	1WB	Claret Suede
	1WC	Felt Grey
	1WE	Terry Walnut
	1WT	Mohair Grey
	1WU	Batiste Black



Technical Information

All product dimensions are nominal.

Vanity type: Wall-mount

Notes

Install this product according to the installation guide.

Decorative cabinet hardware is not supplied. Refer to the KOHLER bath accessories line for recommended cabinet hardware to complement your vanity.

To properly support the weight of the vanity and sink, secure to stud framing or 2x6 bracing behind the finished wall.

Select 500 lb (227 kg) load bearing 5/16" lag bolts with a length to clear obstacles in the wall and 5/16" washers.

Plan for electrical service if installing the optional electrical strip. Any electrical accessory components must be connected to a circuit protected by a Ground-Fault Circuit-Interrupter (GFCI) or Residual Current Device (RCD).