

Features

- Catalyzed conversion varnish finish provides a durable moisture-resistant finish.
- Frameless construction with full-overlay door and drawers.
- Two doors and a center bank of two drawers
- Three-way adjustable slow-close door hinges with 110-degree opening capability for easy cabinet access.
- Optional adjustable shelf, rollout drawer, rollout tray (sold separately).
- Coordinates with other products in the Damask™ collection.
- Full-extension 18" depth drawer with slow-close under-mount slides for smooth opening.
- Solid wood drawers with dovetail construction.
- Door and drawer pulls are sold separately.

Material

- Solid wood and veneers.

Recommended Accessories

- K-99689 Handle
- K-99675 Medicine Cabinet Side Kit
- K-99738 Appliance Tray
- K-99686 Knob
- K-5462 Bathroom Vanity Top
- K-5442 Bathroom Vanity Top
- K-5434 Bathroom Vanity Top

Optional Accessories

- K-99681 Side Mount Electrical Outlets
- K-99682 General Storage
- K-99683 Makeup Storage
- K-99684 Drawer Dividers
- K-99665 Framed Mirror
- K-99676 Filler Strip
- K-99668 Lap Drawer
- K-99672 Two-Drawer Bridge
- K-5449 Bathroom Vanity Top - Back Splash
- K-99662-15 Medicine Cabinet Surround
- K-99662-24 Medicine Cabinet Surround
- K-99662-40 Medicine Cabinet Surround
- K-5451 Bathroom Vanity Top - Side Splash
- K-99566 In-drawer Electrical Outlet
- K-99567 Roll-out Hot Appliance Storage



Codes/Standards






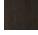


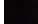
CARB P2

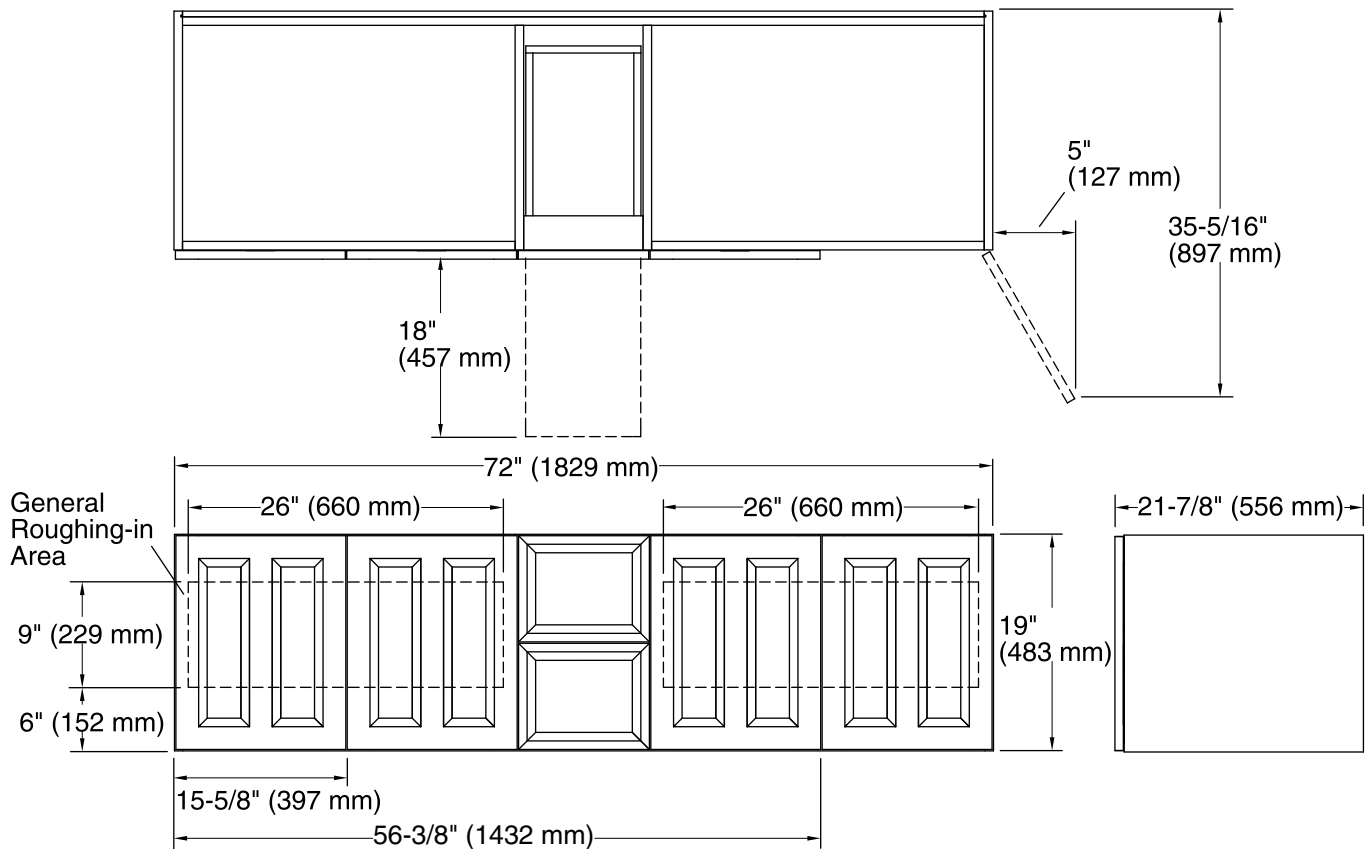
KOHLER® One-Year Limited Warranty

See website for detailed warranty information.

Available Color/Finishes

Color tiles intended for reference only.

Color	Code	Description
	1WA	Linen White
	1WF	Khaki White Oak
	1WD	Ramie Walnut
	1WG	Cherry Tweed
	1WB	Claret Suede
	1WC	Felt Grey
	1WE	Terry Walnut
	1WT	Mohair Grey
	1WU	Batiste Black



Technical Information

All product dimensions are nominal.

Vanity type: Wall-mount

Notes

Install this product according to the installation guide.

Decorative cabinet hardware is not supplied. Refer to the KOHLER bath accessories line for recommended cabinet hardware to complement your vanity.

To properly support the weight of the vanity and sink, secure to stud framing or 2x6 bracing behind the finished wall.

Select 500 lb (227 kg) load bearing 5/16" lag bolts with a length to clear obstacles in the wall and 5/16" washers

Plan for electrical service if installing the optional electrical strip. Any electrical accessory components must be connected to a circuit protected by a Ground-Fault Circuit-Interrupter (GFCI) or Residual Current Device (RCD).