

Features

- Premium construction ensures durability and reliability.
- Includes showerhead with arm and flange, and valve trim plate.
- 2.0 gpm (7.6 lpm) showerhead with Katalyst™ Spray Technology.
- Trim only, requires valve to complete installation.

Required Accessories

K-304-K Pressure-Balancing Valve Less Stops

or

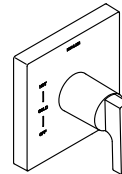
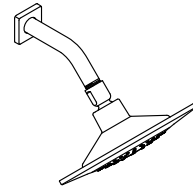
K-304-KS Pressure-Balancing Valve With Stops

or

K-2971-KS 3/4" Pressure-balancing Valve

Deep Rough-In and Extension Kits

1073881



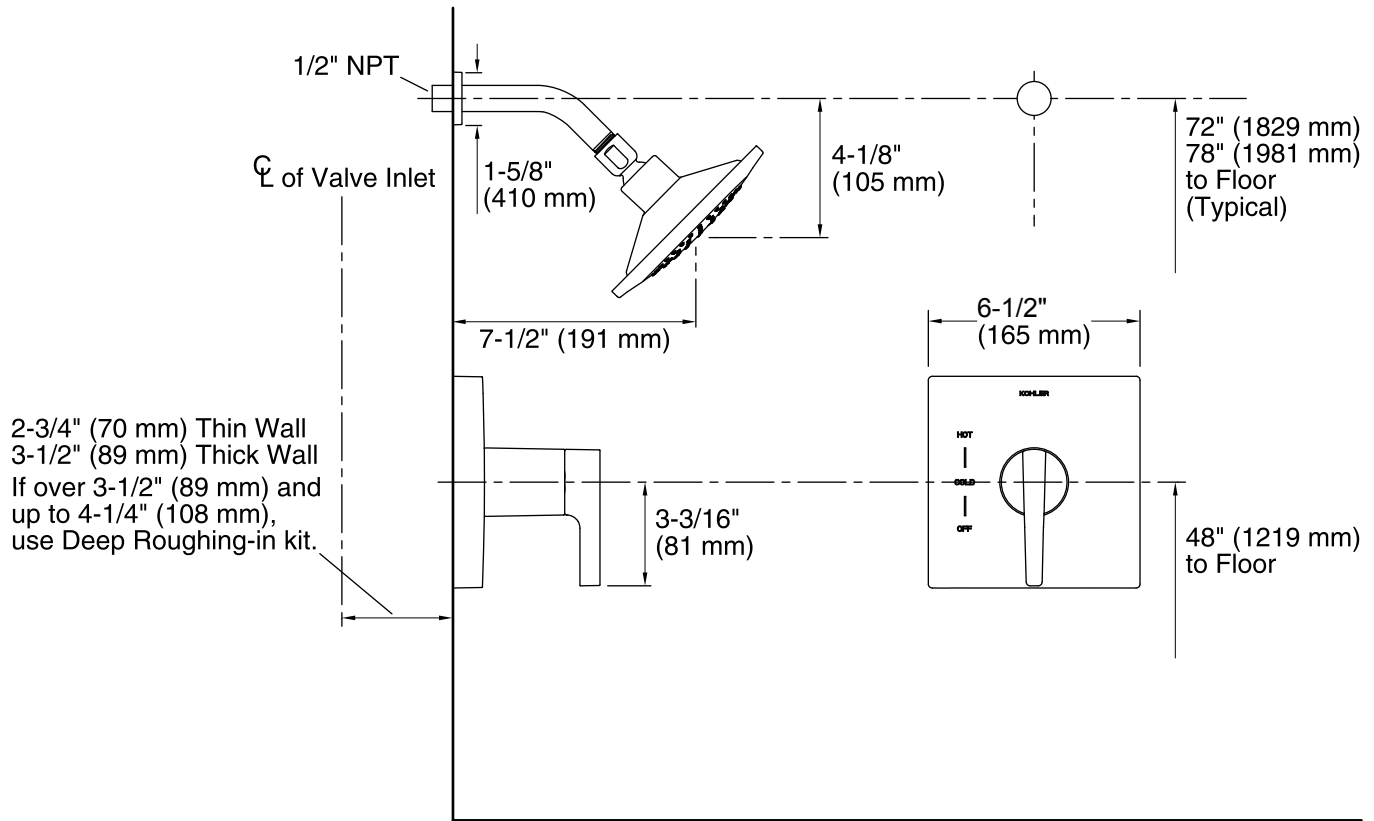
Codes/Standards

ASME A112.18.1/CSA B125.1

ASSE 1016

DOE - Energy Policy Act 1992

See website for detailed warranty information.



Technical Information

All product dimensions are nominal.

Valve body: Machined Brass

Showerhead:

Flow rate: 2 gal/min (7.6 l/min)

Pressure: 45 psi (3.1 bar)

Notes

Install this product according to the installation guide.

NOTICE: Risk of product damage. Long screws, for installing trim, can damage the K-2971-KS valve. Consult the trim installation guide to verify if the thin wall installation kit trim installation guide to verify if the thin wall installation kit (88526) is needed.