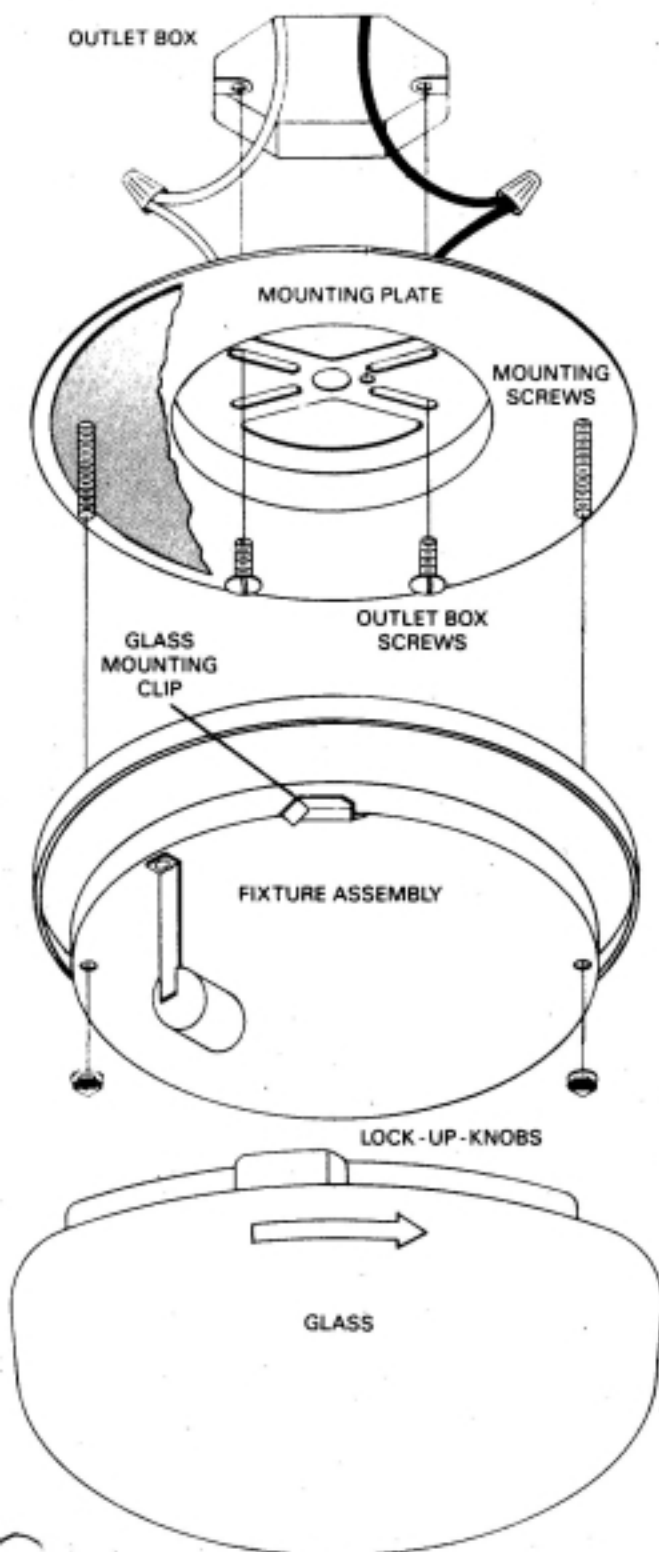




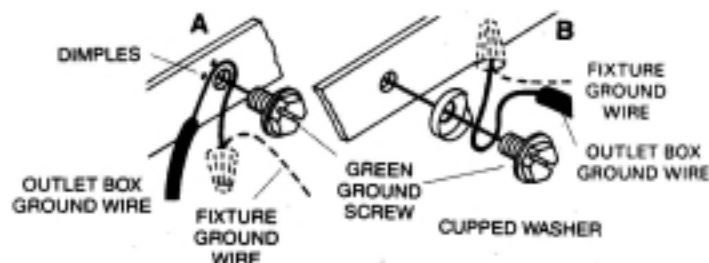
- 1) Turn off power.
- 2) Grounding instructions: (See Illus. A or B).



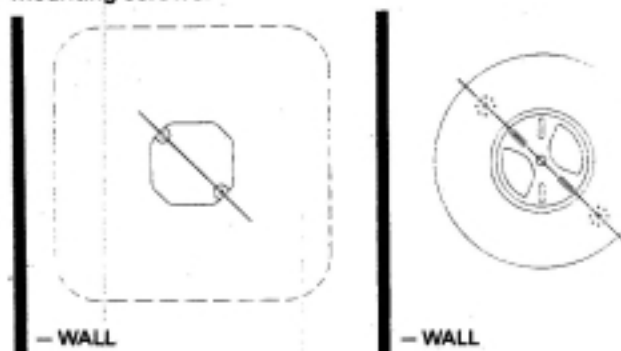
- A) On fixtures where mounting strap is provided with a hole and two raised dimples. Wrap ground wire from outlet box around green ground screw, and thread into hole.
- B) On fixtures where a cupped washer is provided. Attach ground wire from outlet box under cupped washer and green ground screw, and thread into mounting strap.

If fixture is provided with ground wire. Connect fixture ground wire to outlet box ground wire with wire connector. (Not provided.) After following the above steps.

Never connect ground wire to black or white power supply wires.



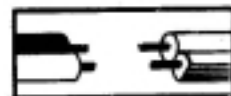
- 3) Carefully pass the outlet box wires through the hole in the center of the mounting plate. Secure the mounting plate to the outlet box with outlet box screws. (Not provided). Important note if you are installing a square fixture and you want sides of glass parallel to wall. If outlet box ears are parallel to your walls-use slots in mounting plate which are **NOT** in alignment with mounting screws. If outlet box ears are not parallel to wall, use slots in mounting plate which are in alignment with mounting screws.



- 4) Make wire connections (connectors not provided.) Reference chart below for correct connections and wire accordingly.

Connect Black or Red House Wire to:	Connect White House Wire to:
Black	White
*Parallel cord (round & smooth)	*Parallel cord (square & ridged)
Clear, Brown, Gold or Black without tracer	Clear, Brown, Gold, or Black with tracer
Insulated wire (other than green) with copper conductor	Insulated wire (other than green) with silver conductor

*Note: When parallel wire (SPT I & SPT II) is used. The tracer wire is square shaped or ridged and the other wire will be round in shape or smooth. (See Illus.)



TRACER WIRE

- 5) Slip fixture assembly over mounting plate and protruding mounting screws. Secure in place with lock-up-knobs.
- 6) Insert lamp. Do not exceed lamp maximum on wattage label.
- 7) Align ears in glass with glass mounting clips on fixture assembly. Push glass up into fixture assembly. Using both hands gently turn glass clockwise until glass stops, approximately 1/4 turn. Carefully check security of glass connection before removing hands. If glass is not snug in place, reverse and repeat procedure.