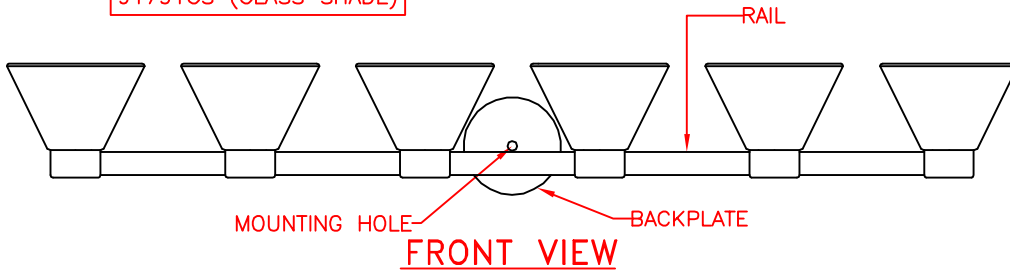
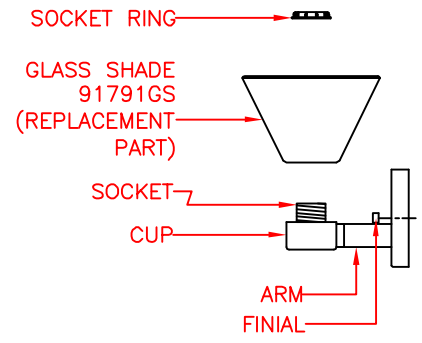


**THIS VANITY CAN BE MOUNTED UP OR DOWN**

AVAILABLE PART IS:  
91791GS (GLASS SHADE)



**FRONT VIEW**



**SIDE VIEW**

**PRODUCT SPECIFICATIONS**

**OVERALL ASSEMBLED DIMENSIONS**

HEIGHT: 17.1 CM (6-3/4"), WIDTH: 132 CM (52"), EXTENSION: 21.7 CM (8-1/2").

**6 LIGHTS:** UL LISTED. 60 WATT. MEDIUM BASE E-26 CERAMIC SOCKET. (6) METAL SOCKET RINGS ARE PROVIDED.

**BACKPLATE:** PLATED STEEL, 12.7 CM (5") DIA. x 2.2 CM (7/8") HEIGHT. A HOLE IN BACKPLATE FOR MOUNTING NIPPLE TO PASS THROUGH. SHAPED AS SHOWN.

**ARM:** PLATED STEEL, 3 CM (1-3/16") LENGTH x 1 CM (3/8") WIDTH TUBING, 6.3 CM (2-1/2") LENGTH.

**RAIL:** PLATED STEEL, 3 CM (1-3/16") LENGTH x 1 CM (3/8") WIDTH TUBING, 117.2 CM (46-1/8") LENGTH.

**CUP:** PLATED STEEL, 6.5 CM (2-1/2") DIA. x 3.6 CM (1-3/8") HEIGHT.

**GLASS SHADE:** WHITE FROSTED GLASS SHADE, 18 CM (7-1/8") DIA. x 11.3 CM (4-1/2") HEIGHT. SHAPED AS SHOWN. GLASS SHADE SHOULD FIT SNUG AND STRAIGHT WHEN ATTACHED.

**SUPPLY WIRE:** UL LISTED. 18 AWG, 150', MUST EXTEND A MINIMUM OF 15.2 CM (6") PAST CENTER OF BACKPLATE. WIRES MUST BE LEAD FREE.

**LABELS:** UL AND CSA OR CUL, MANUFACTURING DATE, MODEL # AND COUNTRY OF ORIGIN LABELS PROVIDED ON INSIDE OF BACKPLATE. RELAMPING LABEL FOR 60 WATT TYPE "A" BULB PROVIDED NEAR SOCKET. RELAMPING LABELS ARE NOT ALLOWED TO BE PLACED ON THE OUTSIDE OF THE PRODUCT OR CUP.

**PACKAGING AND SHIPPING**

THE ITEM IS DISASSEMBLED FOR SHIPPING AS SHOWN. EACH PART IS SECURED SO THEY CAN NOT MOVE DURING SHIPPING.

HARDWARE PACK #002 PROVIDED. ENTIRE FIXTURE IS COVERED IN A CLOSED PLASTIC BAG WITH A SMALL BAG OF SILICA INSIDE.

THE CARTON IS MADE OF DOUBLE WALL, CORRUGATED CARDBOARD "A MA A". BROWN IN COLOR. THE INNER PACKING IS DIE-CUT CARDBOARD OR STYROFOAM TO PROTECT AND SECURE THE LAMP AND MUST PASS THE FEDEX DROP TEST REQUIREMENTS.

EACH CARTON SHALL BE PRINTED WITH A LINE DRAWING AND THE KENROY HOME NAME AND LOGO, MODEL NUMBER AND FINISH, EACH CARTON SHALL BE PROVIDED A UPC LABEL. THE UPC BAR CODE AS FOLLOWS: BS=053392043599.

**OTHER DETAILS:**

ENTIRE BACKPLATE ASSEMBLY MUST SIT FLUSH AGAINST WALL SURFACE.

ALL VISIBLE PARTS MUST MATCH FIXTURE FINISH UNLESS OTHERWISE SPECIFIED.

MODEL 91796BS INSTRUCTIONS ARE TO BE PRINTED CLEARLY ON QUALITY PAPER AND PACKED WITH EACH FIXTURE.

ALL BAGS MUST BE LABELED WITH OFFICIAL "THIS BAG IS NOT A TOY" STATEMENT.

ASSEMBLY TIME: 15 MINUTES.

DIMS OF BOX: 125.7 CM (49-1/2") LENGTH x 26.7 CM (10-1/2") WIDTH x 24.1 CM (9-1/2") HEIGHT.

NET WEIGHT: 11.18 LBS. GROSS WEIGHT (UNIT): 16.61 LBS.

THIS ITEM MUST BE UL APPROVED FOR DAMP LOCATION, THE UL NUMBER IS E127416.

<b>KENROY HOME</b> 11660 CENTRAL PARKWAY JACKSONVILLE, FL. 32224 PHONE: 904-642-4340 FAX: 904-642-4150	THIS DOCUMENT AND THE INFORMATION THAT IT DISCLOSES IS THE EXCLUSIVE PROPERTY OF KENROY HOME. ANY REPRODUCTION OR USE OF THIS DRAWING IN PART OR IN WHOLE, WITHOUT THE EXPRESS CONSENT OF THE PROPRIETOR IS PROHIBITED. © 2010 KENROY HOME.			REVISION DATE:	MODEL #:
				REVISION DATE:	91796
	DATE: 3/3/2010	SCALE: NONE	DRAWN BY: JAMES	REVISION DATE:	FINISH: BS
	REFERENCE:	MAXWELL 6LT. VANITY		APPROVAL:	PAGE: 1 OF: 1