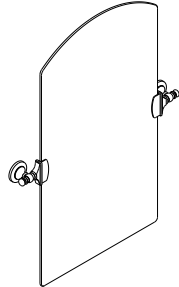


INSTALLATION INSTRUCTIONS



P74305

INSTALLATION INSTRUCTIONS

THANK YOU FOR CHOOSING KALLISTA

We appreciate your commitment to Kallista quality products. Please take a moment to review this manual before you install your Kallista product. If you encounter any installation or performance problems, please do not hesitate to contact us at the phone number listed at the bottom of the page.

BEFORE YOU BEGIN

- ☐ Observe all local building codes.
- ☐ Prior to installation, unpack the new product and inspect it for damage. Return the product to its protective carton until you are ready to install it.

TOOLS AND MATERIALS



Tape
Measure



Pencil



Level



Drill



Safety Glasses



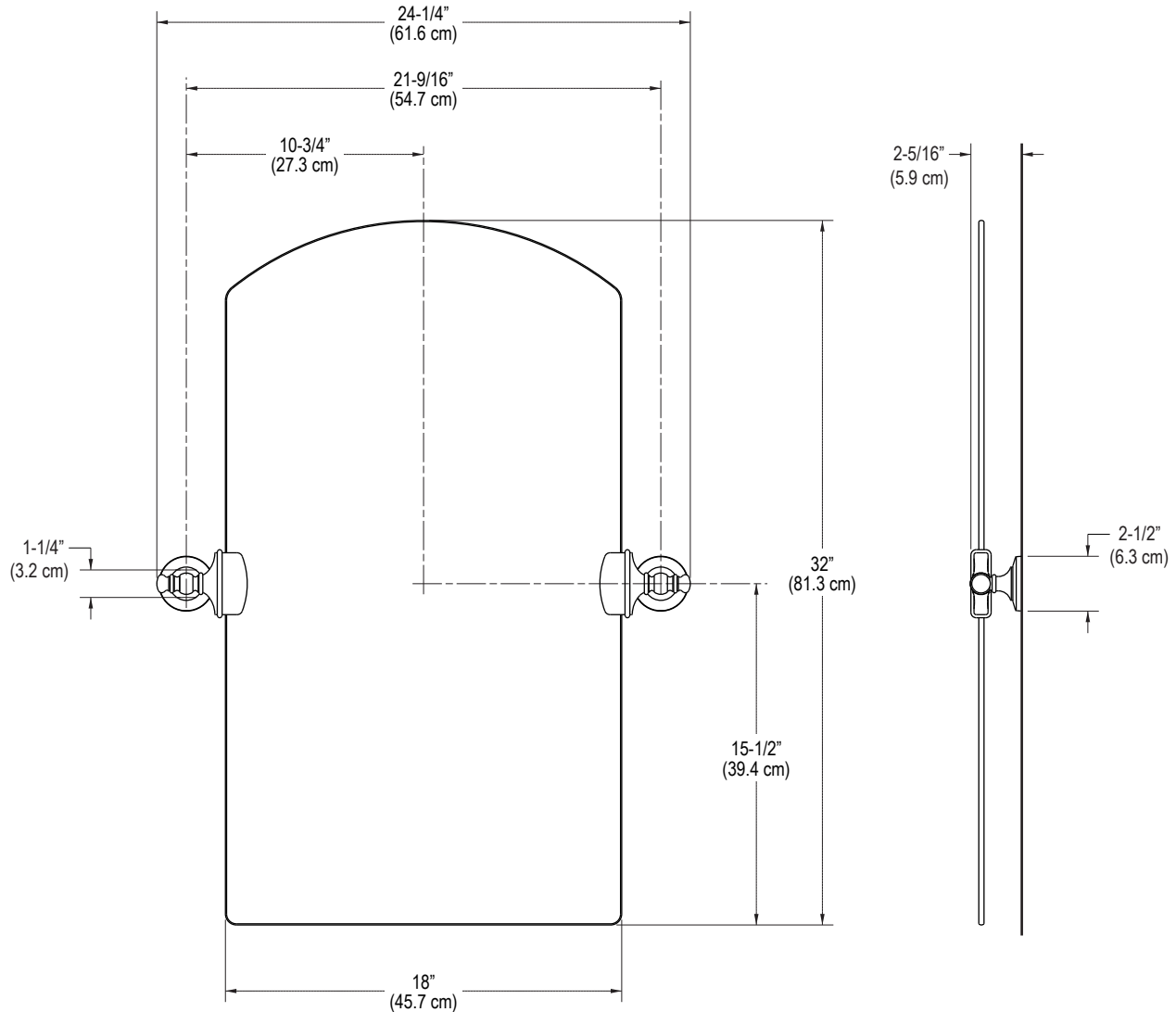
Phillips
Screwdriver



Hex
Wrench

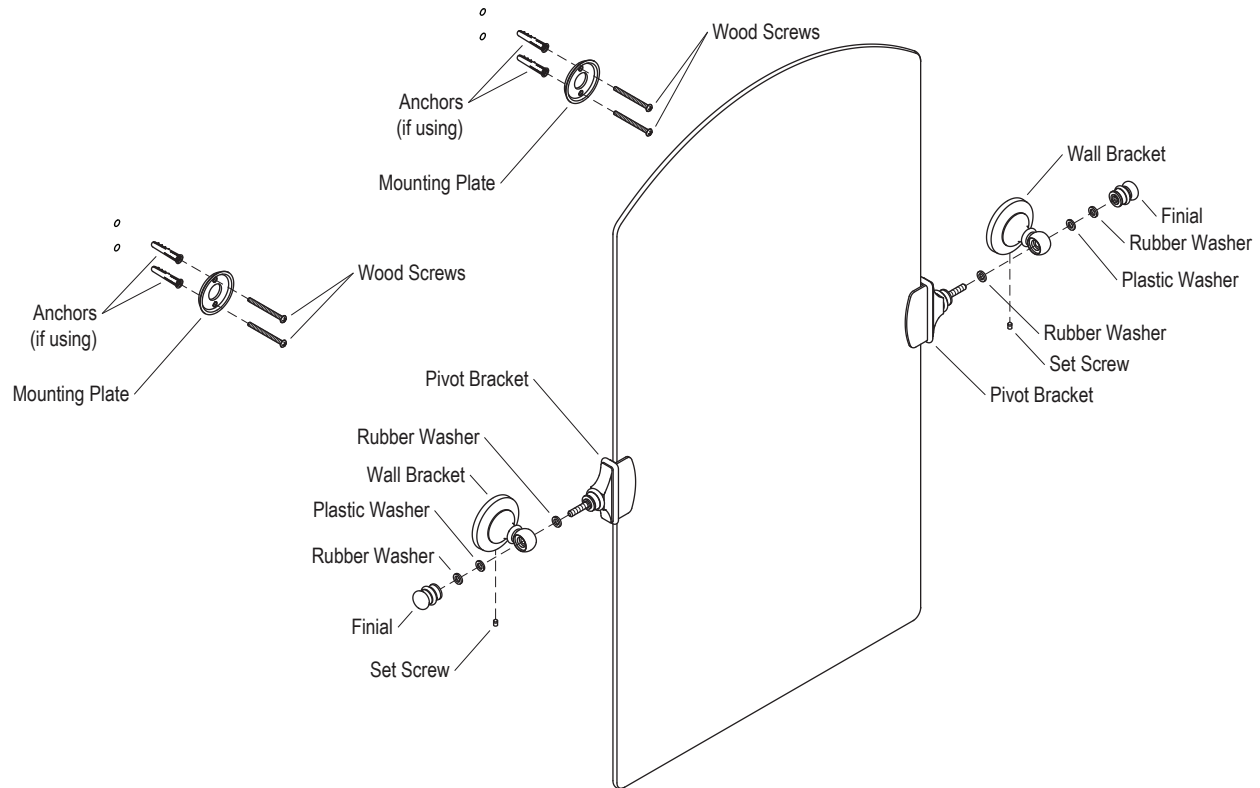
INSTALLATION INSTRUCTIONS

ROUGH-IN INFORMATION



INSTALLATION INSTRUCTIONS

INSTALL THE MIRROR



- ☐ Draw a line on the finished wall at the desired center line of the mirror.
- ☐ Refer to the rough-in information to determine the location of the mounting plates.
- ☐ Mark the location of the mounting plate holes on the finished wall, making sure that the mounting plates will be level when mounted.
- ☐ If drilling into a stud, drill a pilot hole for the wood screws. If there is not a stud behind the mounting plate location, drill holes to accommodate the anchors.
- ☐ Install the anchors, if using. Attach the mounting plates to the finished wall with the wood screws.
- ☐ Assemble the rubber washers, wall brackets, plastic washers and finials to the pivot brackets, as shown.
- ☐ Hand tighten the finials so that the wall brackets do not rotate easily.
- ☐ Secure the wall brackets to the mounting plates with the set screws.
- ☐ Loosen the finials slightly. Adjust the mirror to the desired angle. Re-tighten the finials.