

## Features

- High-quality solid metal construction for durability and reliability
- Required rough-in sold separately
- Offers a customizable shower experience

## Required Products/Accessories

P29527-00 1/2" Volume Control Rough-In Assembly  
 or  
 P29528-00 3/4" Volume Control Rough-In Assembly

## Recommended Products/Accessories

P25022-CR Script Thermostatic Trim, Cross Handle  
 P25024-CR Transfer Trim, Cross Handle  
 P25041-00 Towel Bar, 24"  
 P21510-G Air-Induction ECO Small Traditional Rain Showerhead



**ADA** **CSA B651** **OBC**

## Codes/Standards







ASME A112.18.1/CSA B125.1  
 ADA  
 ICC/ANSI A117.1  
 CSA B651  
 OBC

## KALLISTA® Five-Year Limited Warranty

See website for detailed warranty information.

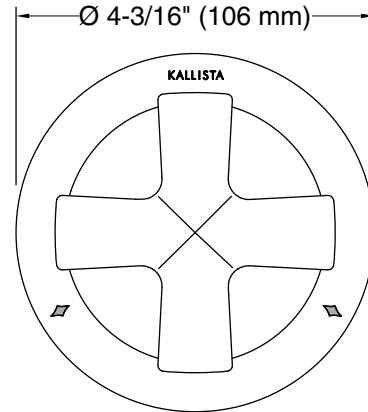
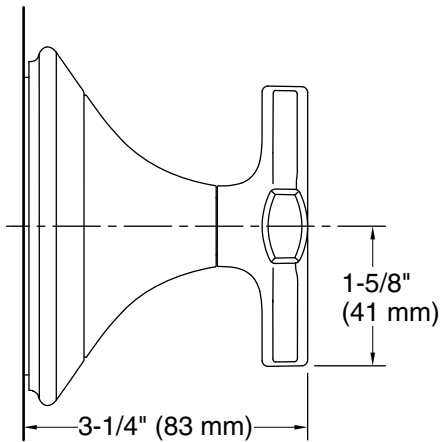
## Available Colors/Finishes

*Color tiles intended for reference only.*

Color	Code	Description
	CP	Polished Chrome
	BAF	Brushed French Gold
	BN	Brushed Nickel
	BV	Brushed Bronze
	SN	Polished Nickel
	2MB	Brushed Moderne Brass

# KALLISTA

Script® by KALLISTA  
Script Volume Control Trim, Cross Handle  
P25023-CR



## Technical Information

All product dimensions are nominal.

## Notes

ADA, OBC, CSA B651 compliant when installed to the specific requirements of these regulations.