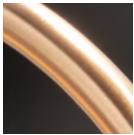




Clayton 60" 3-Tier 45-Light Chandelier



Metal Finish:



Matte Black/Brass (MBBR)

Lamping:



Standard Incandescent

Configured SKU: NSH-8049-MBBR

Description :

Clayton 60" 3-Tier 45-Light Chandelier

Primary Shade Material :

[No Shade Material](#)

Frame Style :

[Clayton](#)

UL/ETL Listing :

Suitable for Damp Locations

Feature :

[EVOLV](#)

Standard Incandescent :

(45) 40W E12 Max

Dimension :

60" Dia. x 43.25" H

Canopy Size :

6" Dia. x 1" H

Notes :

Includes (3) 12" + (2) 6" stems for adjustable heights,
Stems connect to canopy with a single chain link, Fixture
Weight: 85 lbs, Adjustable OAH