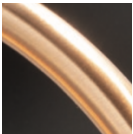




Clayton 42" 2-Tier 27-Light Chandelier



Metal Finish:



Matte Black/Brass (MBBR)

Lamping:



Standard Incandescent

Configured SKU: NSH-8048-MBBR

Description :

Clayton 42" 2-Tier 27-Light Chandelier

Primary Shade Material :

[No Shade Material](#)

Frame Style :

[Clayton](#)

UL/ETL Listing :

Suitable for Damp Locations

Feature :

[EVOLV](#)

Standard Incandescent :

(27) 40W E12 Max

Dimension :

42" Dia. x 31" H

Canopy Size :

6" Dia. x 1" H

Notes :

Includes (3) 12" + (2) 6" stems for adjustable heights, Stems connect to canopy with a single chain link, Fixture Weight: 60 lbs, Adjustable OAH

Justice Design Group, LLC.
Los Angeles, California

Telephone: (800) 533-4799 (213) 437-0102
Fax: (800) 533-2911 (213) 437-0860

Email: sales@JDG.com
Website: www.JDG.com