

**CLASSIC 15" CLOSE-TO-CEILING DRUM****Base Part Number:**

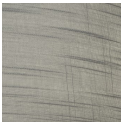
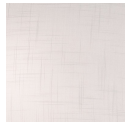
FAB-9595

**DESCRIPTION:** Classic 15" Close-to-ceiling Drum**UL LISTING:** Suitable for Damp Locations**LAMPING:**

- Optional GU24 LED: (3) 10W GU24 LED Max

**SIZE:** 15" Dia. x 5" H**OUTDOOR:** No**ADA:** No**PRIMARY SHADE MATERIAL:** Woven Fabric**METAL FINISH OPTIONS:** Dark Bronze (DBRZ),  
Brushed Nickel (NCKL)**SHADE FINISH OPTIONS:** Cream Linen Fabric  
(CREM)**OPTIONS AND NOTES:**

- Includes 5" canopy and hang-straight
- Approximately 1/2" gap between ceiling and top of shade
- GU24 LED bulb not included

**Item Shown:** FAB-9595-CREM-DBRZ**Metal Finishes:****Dark Bronze  
(DBRZ)****Brushed  
Nickel  
(NCKL)****Shade Finish Options:****Cream Linen  
Fabric  
(CREM)****Gray Linen  
Fabric  
(GRAY)****White Linen  
Fabric  
(WHITE)****Justice Design Group, LLC.**  
Los Angeles, California**Telephone:** (800) 533-4799 (213) 437-0102  
**Fax:** (800) 533-2911 (213) 437-0860**Email:** sales@JDG.com  
**Website:** www.JDG.com