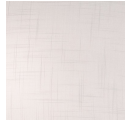


CLASSIC 18" DRUM PENDANT**Base Part Number:**
FAB-9591**DESCRIPTION:** Classic 18" Drum Pendant
UL LISTING: Suitable for Damp Locations**LAMPING:**

- Incandescent: (3) 60W Type A-19 Max

SIZE: 18" Dia. x 6" H**OUTDOOR:** No**ADA:** No**PRIMARY SHADE MATERIAL:** Woven Fabric**METAL FINISH OPTIONS:** Dark Bronze (DBRZ),
Brushed Nickel (NCKL)**SHADE FINISH OPTIONS:** Cream Linen Fabric
(CREM)**OPTIONS AND NOTES:**

- Adjustable Height: Includes (3) 12" + (1) 6" stems & hang-straight
- Larger and smaller drum sizes available

Item Shown: FAB-9591-CREM-NCKL**Metal Finishes:****Dark Bronze
(DBRZ)****Brushed
Nickel
(NCKL)****Shade Finish Options:****Cream Linen
Fabric
(CREM)****Gray Linen
Fabric
(GRAY)****White Linen
Fabric
(WHITE)****Justice Design Group, LLC.**
Los Angeles, California**Telephone:** (800) 533-4799 (213) 437-0102
Fax: (800) 533-2911 (213) 437-0860**Email:** sales@JDG.com
Website: www.JDG.com