



Justice Design Group

Architectural and Decorative Lighting

METROPOLIS 4-LIGHT CHANDELIER

**Base Part Number:**

WGL-8100

DESCRIPTION: Metropolis 4-Light Chandelier

UL LISTING: Suitable for Damp Locations

LAMPING:

- Incandescent: (4) 100W A-19 Max
- Optional Fluorescent: (4) 18W GU24 Self Ballast CFL Max

SIZE: 19.25" H x 25" Dia.

OUTDOOR: No

ADA: No

PRIMARY SHADE MATERIAL: Wire Cage w/ Blown Glass

SHADE OPTIONS: Cylinder w/ Flat Rim (-10), Square w/ Flat Rim (-15)

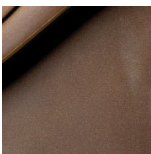
METAL FINISH OPTIONS: Dark Bronze (DBRZ), Brushed Nickel (NCKL), Matte Black (MBLK), Polished Chrome (CROM)

SHADE FINISH OPTIONS: Grid w/ Clear Bubbles (GRCB), Grid w/ Opal (GROP), Swirl w/ Clear Bubbles (SWCB), Swirl w/ Opal (SWOP)

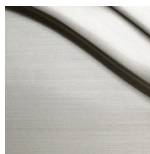
OPTIONS AND NOTES:

- Additional Chain Available
- Includes 6 ft. of chain and 10 ft. of wire
- Approximate fixture weight: 40 lbs.
- Recommend the use of clear bulbs

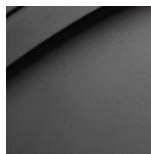
Item Shown: WGL-8100-10-SWCB-DBRZ

Metal Finishes:

Dark Bronze (DBRZ)



Brushed Nickel (NCKL)



Matte Black (MBLK)



Polished Chrome (CROM)

Shade Shape Options:

Cylinder w/ Flat Rim (-10)



Square w/ Flat Rim (-15)

Shade Finish Options:



**Grid w/ Clear
Bubbles
(GRCB)**



**Grid w/ Opal
(GROP)**



**Swirl w/
Clear
Bubbles
(SWCB)**



**Swirl w/ Opal
(SWOP)**

Justice Design Group, LLC.
Los Angeles, California

Telephone: (800) 533-4799 (213) 437-0102
Fax: (800) 533-2911 (213) 437-0860

Email: sales@JDG.com
Website: www.JDG.com