



# TRAC-MASTER®

Low Voltage

## MR16 LED-COMPATIBLE LAMP HOLDERS T1040, T1041, T1042 and T1043

Project: \_\_\_\_\_

Fixture Type: \_\_\_\_\_

Location: \_\_\_\_\_

Contact/Phone: \_\_\_\_\_

### PRODUCT DESCRIPTION

These low voltage fixtures offer both mechanical and electrical compatibility with most MR16 LED lamps (by others). Constructed with open or semi-open designs, this series provides for improved airflow around the lamp, leading to better cooling and optimized LED lamp life. They may also be used with MR16 halogen lamps with integral cover glass. The horizontal version has an integral transformer housing which is centered above the lampholder, offering a new and unique aesthetic in a small, close-to-the-trac fixture footprint.

### PRODUCT SPECIFICATIONS

**Construction** Lampholders are constructed of die cast aluminum • Transformer housings are constructed of molded polycarbonate.

**Socket** GU5.3/GX5.3 ceramic bi-pin.

**Lamp** Compatible with most 12VAC MR16 LED lamps (by others) – contact lamp manufacturer to confirm transformer compatibility • Also compatible with 50W max. 12VAC MR16 halogen lamps with integral cover glass.

**Transformer** Hatch RL12-60M-LED, 60VA, 12VAC solid state electronic • Integral to fixture in either horizontal or vertical orientation • ANSI/IEEE C62.41 .Class A transient protection • Short circuit protection.

**Dimming** Dimmable (with dimmable lamps) using Acuity nLight wired dimming controls, including Fresco controllers, when combined with an nLight nSP5 PCD ELV 120 Secondary Relay and Dimming Pack (required) at the trac input • Dimming range of 100% down to 1% typical\* with a minimum load of one fixture and maximum load of 475W @ 120VAC • Also dimmable using a variety of standard wall box dimmers – contact lamp manufacturer to confirm compatibility.

**Juno Universal Trac Adapter** Universally compatible with both Trac-Master 1-circuit or 2-circuit trac, Trac-Lites trac, monopoints and special mountings • Also UL Recognized for use on ConTech® LT Series track • Copper alloy contacts provide precise spring action - no arcing and will not take a set • True, positive electrical ground • Spring-loaded positive latch with embossed polarity arrows secures trac light to trac • Two-position power contact provided for two-circuit application.

**Alternate GTYPE Trac Adapter** Compatible with track systems based on GES type track, including Lithonia LT Commercial Track (not LTS type) • System specific and assembled to trac fixture • Consult factory for additional information.

**Alternate HTYPE Trac Adapter** Compatible with track systems which use a H-type track adapter, including Lithonia LTS Decorative Track (not LT type) • System specific and assembled to trac fixture • Two-position power contact provided for two-circuit application • Consult factory for additional information.

**Alternate LTYPE Trac Adapter** Compatible with track systems which use a L-type track adapter • System specific and assembled to trac fixture • Two-position power contact provided for two-circuit application • Consult factory for additional information.

**Accessories** T1042 can accommodate up to two accessories using Accessory Spring Kit.

**Aiming** 90° vertical aiming capability and 358° rotation.

**Labels** UL and C-UL Listed • Fixtures can be assembled with reduced maximum wattage rating labels to facilitate energy code compliance – consult factory • Union made • Assembled in U.S.A.

Specifications subject to change without notice.

\*Typical dimming range based on laboratory evaluation – actual installation conditions and results may vary.

ConTech is a registered trademark of ConTech Lighting.



One Lithonia Way • Conyers, GA 30012 • Phone 1-800-705-SERV (7378) • Visit us at [www.acuitybrands.com](http://www.acuitybrands.com)  
Printed in U.S.A. © 2017-2021 Acuity Brands Lighting, Inc. Rev. 10/4/21

**TRAC-MASTER®**

Low Voltage

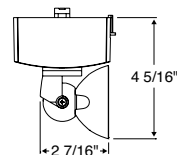
**MR16 LED-COMPATIBLE  
LAMP HOLDERS****T1040, T1041, T1042 and T1043****Horizontal Lily16**

Catalog Number	Description	Finish	Lamp
<b>T1040 H WH</b>	Lily16 - Horizontal	White	12V, 50W MR16 max.
<b>T1040 H BL</b>	Lily16 - Horizontal	Black	12V, 50W MR16 max.
<b>T1040 H SL</b>	Lily16 - Horizontal	Silver	12V, 50W MR16 max.
<b>T1040 GTYPE H WH</b>	Lily16 - Horizontal w/G-Type Trac Adapter	White	12V, 50W MR16 max.
<b>T1040 GTYPE H BL</b>	Lily16 - Horizontal w/G-Type Trac Adapter	Black	12V, 50W MR16 max.
<b>T1040 HTYPE H WH</b>	Lily16 - Horizontal w/H-Type Trac Adapter	White	12V, 50W MR16 max.
<b>T1040 HTYPE H BL</b>	Lily16 - Horizontal w/H-Type Trac Adapter	Black	12V, 50W MR16 max.
<b>T1040 LTYPE H WH</b>	Lily16 - Horizontal w/L-Type Trac Adapter	White	12V, 50W MR16 max.
<b>T1040 LTYPE H BL</b>	Lily16 - Horizontal w/L-Type Trac Adapter	Black	12V, 50W MR16 max.

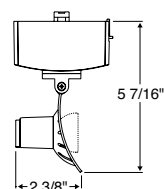
**ACCESSORIES****Cat. No. Description****T40N<sup>1</sup>** Monopoint CanopyOther accessories can be found on specification sheet [D1.2.0](#).

Notes:

1 Add finish code to complete catalog number (Example: T40N WH).

**Dimensions****Horizontal Arc16**

Catalog Number	Description	Finish	Lamp
<b>T1041 H WH</b>	Arc16 - Horizontal	White	12V, 50W MR16 max.
<b>T1041 H BL</b>	Arc16 - Horizontal	Black	12V, 50W MR16 max.
<b>T1041 GTYPE H WH</b>	Arc16 - Horizontal w/G-Type Trac Adapter	White	12V, 50W MR16 max.
<b>T1041 GTYPE H BL</b>	Arc16 - Horizontal w/G-Type Trac Adapter	Black	12V, 50W MR16 max.
<b>T1041 HTYPE H WH</b>	Arc16 - Horizontal w/H-Type Trac Adapter	White	12V, 50W MR16 max.
<b>T1041 HTYPE H BL</b>	Arc16 - Horizontal w/H-Type Trac Adapter	Black	12V, 50W MR16 max.
<b>T1041 LTYPE H WH</b>	Arc16 - Horizontal w/L-Type Trac Adapter	White	12V, 50W MR16 max.
<b>T1041 LTYPE H BL</b>	Arc16 - Horizontal w/L-Type Trac Adapter	Black	12V, 50W MR16 max.

**Dimensions****ACCESSORIES****Cat. No. Description****T40N<sup>1</sup>** Monopoint CanopyOther accessories can be found on specification sheet [D1.2.0](#).

Notes:

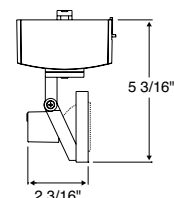
1 Add finish code to complete catalog number (Example: T40N WH).

**TRAC-MASTER®**

Low Voltage

**MR16 LED-COMPATIBLE  
LAMP HOLDERS****T1040, T1041, T1042 and T1043****Horizontal Concentricity16**

Catalog Number	Description	Finish	Lamp
<b>T1042 H WH</b>	Concentricity16 - Horizontal	White	12V, 50W MR16 max.
<b>T1042 H BL</b>	Concentricity16 - Horizontal	Black	12V, 50W MR16 max.
<b>T1042 H SL</b>	Concentricity16 - Horizontal	Silver	12V, 50W MR16 max.
<b>T1042 GTYPE H WH</b>	Concentricity16 - Horizontal w/G-Type Trac Adapter	White	12V, 50W MR16 max.
<b>T1042 GTYPE H BL</b>	Concentricity16 - Horizontal w/G-Type Trac Adapter	Black	12V, 50W MR16 max.
<b>T1042 HTYPE H WH</b>	Concentricity16 - Horizontal w/H-Type Trac Adapter	White	12V, 50W MR16 max.
<b>T1042 HTYPE H BL</b>	Concentricity16 - Horizontal w/H-Type Trac Adapter	Black	12V, 50W MR16 max.
<b>T1042 LTYPE H WH</b>	Concentricity16 - Horizontal w/L-Type Trac Adapter	White	12V, 50W MR16 max.
<b>T1042 LTYPE H BL</b>	Concentricity16 - Horizontal w/L-Type Trac Adapter	Black	12V, 50W MR16 max.

**Dimensions****ACCESSORIES**

Cat. No.	Description	Cat. No.	Description	Cat. No.	Description
<b>TASK2</b>	Accessory Spring Clip Kit	<b>DGF 275<sup>1</sup></b>	Dichroic Glass Filters	<b>PRISM 275<sup>1</sup></b>	Prismatic Spread Lens
<b>HCLBL 275<sup>1</sup></b>	Hexagonal Cell Louver - Black	<b>DCCF 275<sup>1</sup></b>	Dichroic Color Correction Filters	<b>LSPREAD 275<sup>1</sup></b>	Linear Spread Lens
<b>SNOOTBL 275<sup>1</sup></b>	Snoot - Black	<b>UVF 275<sup>1</sup></b>	UV Filter	<b>T40N<sup>2</sup></b>	Monopoint Canopy
<b>EYEBROWBL 275<sup>1</sup></b>	Eyebrow - Black	<b>DIFF 275<sup>1</sup></b>	Diffusion Lens		
<b>CGF 275<sup>1</sup></b>	Color Glass Filters	<b>SOLITE 275<sup>1</sup></b>	Uniformity Lens (Solite)		

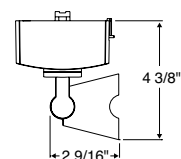
See specification sheet [D1.2.2](#) for details. Other accessories can be found on specification sheet [D1.2.0](#).

Notes:

- 1 Filters, lenses and louver require Accessory Spring Clip Kit for installation.  
 2 Add finish code to complete catalog number (Example: T40N WH).

**Horizontal Cone16**

Catalog Number	Description	Finish	Lamp
<b>T1043 H WH</b>	Cone16 - Horizontal	White	12V, 50W MR16 max.
<b>T1043 H BL</b>	Cone16 - Horizontal	Black	12V, 50W MR16 max.
<b>T1043 GTYPE H WH</b>	Cone16 - Horizontal w/G-Type Trac Adapter	White	12V, 50W MR16 max.
<b>T1043 GTYPE H BL</b>	Cone16 - Horizontal w/G-Type Trac Adapter	Black	12V, 50W MR16 max.
<b>T1043 HTYPE H WH</b>	Cone16 - Horizontal w/H-Type Trac Adapter	White	12V, 50W MR16 max.
<b>T1043 HTYPE H BL</b>	Cone16 - Horizontal w/H-Type Trac Adapter	Black	12V, 50W MR16 max.
<b>T1043 LTYPE H WH</b>	Cone16 - Horizontal w/L-Type Trac Adapter	White	12V, 50W MR16 max.
<b>T1043 LTYPE H BL</b>	Cone16 - Horizontal w/L-Type Trac Adapter	Black	12V, 50W MR16 max.

**Dimensions****ACCESSORIES**

Cat. No.	Description
<b>T40N<sup>1</sup></b>	Monopoint Canopy

Other accessories can be found on specification sheet [D1.2.0](#).

Notes:

- 1 Add finish code to complete catalog number (Example: T40N WH).