

# JUNO®

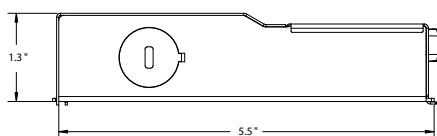
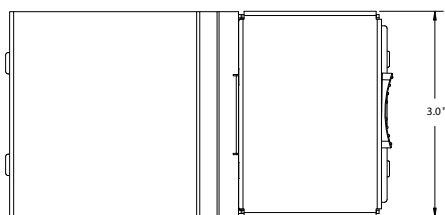
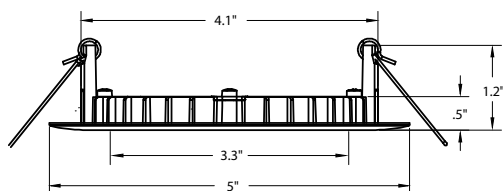
## Juno Wafer™ LED Downlight Series

### 4" LED Ultra-Thin Wafer Switchable Downlight 670 Lumens

#### WF4 SWW5 Series



#### Dimensions



|                |
|----------------|
| Project:       |
| Fixture Type:  |
| Location:      |
| Contact/Phone: |

#### Product Features

The 4" round smooth with 5CCT Switchable White technology provides high-quality light output and efficiency featuring a switch for easy color temperature adjustment to choose between 2700K, 3000K, 3500K, 4000K, or 5000K - while eliminating the need for recessed housings.

- Round smooth lens trim designed to distribute precise even illumination for general purpose areas
- Canless - no can required; equals easy to install and less labor
- 5 selectable color temperatures to choose with a switch ranging from warm (2700K) to daylight (5000K) allowing customization for endless applications

#### Applications

- Residential and light commercial applications including multi-family, hospitality, assisted living, dormitories and other multi-level construction
- Shallow slim profile allows for easy remodel or new construction insulated and drop ceiling installations
- Wet rated and airtight: perfect for showers, bathrooms, and outdoor soffits

#### Performance

|                       |  |
|-----------------------|--|
| Delivered Lumens      | 670L Nominal at 3000K  |
| LED Color Temperature | Switchable White (27K, 30K, 35K, 40K, 50K)<br>Default set at 3000K |
| CRI                   | 90+  |
| Voltage               | Dedicated 120V   |
| Dimming               | Dimmable to 10% only with triac dimmers.                           |

For a list of compatible dimmers see JUNO-WAFERS-DIM

#### Specifications

|                  |       |
|------------------|-------|
| Aperture:        | 3.3"  |
| Ceiling opening: | 4.25" |
| Overlap trim:    | 5"    |
| Height:          | 1.2"  |



# Juno Wafer™ LED Downlight Series

## 4" LED Ultra-Thin Wafer Switchable Downlight 670 Lumens



### ORDERING INFORMATION

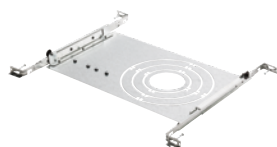
#### Downlight

Example: WF4 SWW5 90CRI MW M6

| Series     | Trim Style                  | Color Temperature  | Rendering Index |         | Finish    |             |
|------------|-----------------------------|--|-----------------|---------|-----------|-------------|
| <b>WF4</b> | 4" Wafer-Thin LED Downlight | <b>SWW5</b> Switchable White (2700K, 3000K, 3500K, 4000K, 5000K) | <b>90CRI</b>    | 90+ CRI | <b>MW</b> | Matte White |
|            | <b>(BLANK)</b> Round        |  |                 |         | <b>MB</b> | Matte Black |

#### Accessories: Order as separate catalog number.

| Series                    |  |
|---------------------------|--|
| <b>WF8643 PAN U</b>       | Universal New Construction Pan             |
| <b>WF4 PAN R12</b>        | 4" new construction pan, retail pack of 12 |
| <b>WF4GR MW JZ</b>        | 4" Goof Ring                               |
| <b>WFJB U</b>             | Remodel Joist Bar                          |
| <b>WFEXC6 SW3PIN FT4</b>  | 3-Pin 6ft Cable                            |
| <b>WFEXC10 SW3PIN FT4</b> | 3-Pin 10ft Cable                           |
| <b>WFEXC20 SW3PIN FT4</b> | 3-Pin 20ft Cable                           |



WF8643 UNIVERSAL New Construction Pan



WF4 PAN 4" New Construction Pan



Remodel Joist Bar



WFEXCx 3-Pin Cable

### PERFORMANCE DATA

|                       | <b>WF4</b>                               |
|-----------------------|--|
| Input Voltage         | 120V                                     |
| Input Power Typical   | 9W (+/-5%)                               |
| Frequency             | 60 Hz                                    |
| EMI/RFI               | FCC Title 47, Part 15 Class B (consumer) |
| Minimum Starting Temp | -40°F (-40°C)                            |

**Note:** Actual performance may differ as a result of end-user environment and application. All values are design or typical values, measured under laboratory conditions at 25°C.

| LIGHTING PERFORMANCE DATA<br>DONNÉES SUR LE RENDEMENT<br>DE L'ÉCLAIRAGE |                                 |
|---|---------------------------------|
| Light Appearance (CCT)<br>Aspect de la lumière (CCT)                    |                                 |
| <b>2700K</b> soft white   blanc doux                                    | 665 lumens   74 lumens per watt |
| <b>3000K</b> warm white   blanc chaud                                   | 670 lumens   74 lumens per watt |
| <b>3500K</b> neutral white   blanc neutre                               | 680 lumens   76 lumens per watt |
| <b>4000K</b> cool white   blanc froid                                   | 685 lumens   76 lumens per watt |
| <b>5000K</b> daylight   blanc neutre                                    | 690 lumens   76 lumens per watt |
| Watts   | <b>9</b>                        |
| Color Accuracy (CRI)<br>Précision des couleurs (CRI)                    | <b>90</b>                       |



# Juno Wafer™ LED Downlight Series

## 4" LED Ultra-Thin Wafer Switchable Downlight 670 Lumens



### Specifications

#### Housing

Polycarbonate injection molded outer frame, with steel back plate. Non-conductive dead-front trim design suitable for a wide range of applications and codes requiring a non-conductive lens • FT4 3-pin plenum rated cable connector to connect from module to remote driver box • Steel spring clip for easy installation. 4" cut out template is provided to ensure a correct sized hole is cut into ceiling for proper installation of the trim. Size of hole should not exceed 4 ¼ inches for this product • Can be installed from 3/8" to 1 ½" ceiling thickness • Can be removed from below the ceiling for service or replacement.

#### LED Light Engine

Switchable white color temperature from 2700K, 3000K, 3500K, 4000K, 5000K • 90 CRI minimum • Color accuracy within 4 step McAdams Ellipse at the end CCT (2700K and 5000K), within 6 step McAdams Ellipse in the middle CCT (3000K, 3500K, and 4000K) • Dimming 100% to 10% with most standard incandescent dimers (see list of approved dimmers).

#### Driver

Connect directly to 120V Class-2 (CAN ICES-005 (B) / NMB-005 (B)) LED driver • 120V 60 Hz constant current driver provides noise free operation • IC rated driver with convenience of a switch to choose between 5 selectable color temperature options ranging from 2700K (warm white), 3000K, 3500K, 4000K, or 5000K (daylight) • The isolated driver integrated inside steel remote box with four 7/8" knockouts with slots for pryout. Suitable for pulling wires with the 12 cubic-inch wiring compartment to accommodate up to (6) 14 gauge insulated conductors; making the Wafer LED Downlights much easier to wire in 2in/2out (plus ground) daisy-chain applications and contractor friendly • 3" plenum space required for installation of the remote driver box.

#### Optical System

Edge-lit LED technology uses light guided plate to distribute light • Polycarbonate lens provides even illumination throughout the space • Efficient system that can produce over 670 lumens while using 9W • Replaces 65W incandescent.

#### Life

Rated for 50,000 hours at 70% lumen maintenance.

#### Labels

CSA certified to US and Canadian safety standards • ENERGY STAR® certified product • Suitable for wet location • Air-Loc certified in accordance with ASTM E283-2004 • NOM Certified • Can be used to comply with California Title 24 Part 6 High Efficacy LED light Source Requirements. IP5X Rated, product is protected against dust. U.S. Patent No. 10,681,784.

#### Testing

All reports are based on published industry procedures; field performance may differ from laboratory performance.

Warranty 3-year limited warranty. Complete warranty terms located at: [www.acuitybrands.com/CustomerResources/Terms\\_and\\_conditions.aspx](http://www.acuitybrands.com/CustomerResources/Terms_and_conditions.aspx)

Specifications subject to change without notice.



# Juno Wafer™ LED Downlight Series

## 4" LED Ultra-Thin Wafer Switchable Downlight 670 Lumens



### PHOTOMETRICS

Distribution Curve

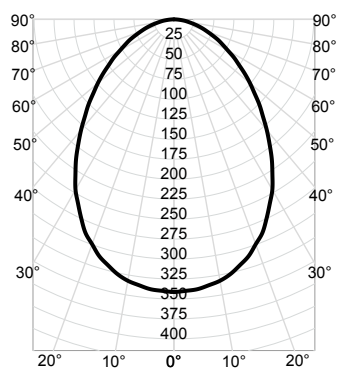
Distribution Data

Output Data

Coefficient of Utilization

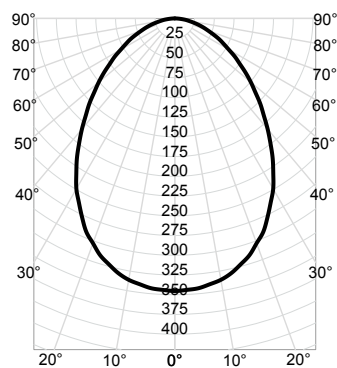
Illuminance Data at 30" Above Floor for a Single Luminaire

**WF4 SWW5 90CRI 2700K** Input Watts: 8.9, Delivered Lumens: 670, LPW: 75.3, S/MH: 1.09, Test No: ISF 202630P1



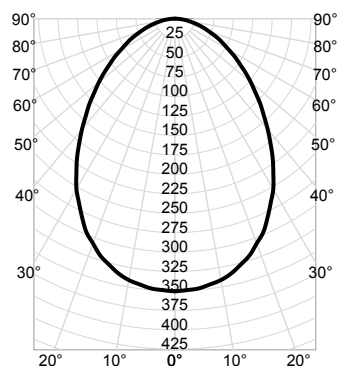
| CP Summary |            | Zonal Lumen Summary |           |    |     | Coefficients of Utilization |     |     |     |     |     |     |     |                     |                        | Cone of Light |                   |        | Luminance (cd/sq.m) |  |
|------------|------------|---------------------|-----------|----|-----|-----------------------------|-----|-----|-----|-----|-----|-----|-----|---------------------|------------------------|---------------|-------------------|--------|---------------------|--|
| 0°         | Zone       | Lumens              | % Fixture | pw | 50% | 30%                         | 10% | 50% | 30% | 10% | 50% | 30% | 10% | Mounting Height     | Initial FC Center Beam | Beam Diameter | Average Luminance |        |                     |  |
| 0°         | 0° - 30°   | 243                 | 36%       | 0  | 119 | 119                         | 119 | 116 | 116 | 116 | 111 | 111 | 111 | 6.0                 | 9.5                    | 10.7          | 0°                | 42,950 |                     |  |
| 5°         | 0° - 40°   | 369                 | 55%       | 1  | 106 | 102                         | 98  | 104 | 100 | 97  | 99  | 96  | 94  | 8.0                 | 5.3                    | 14.2          | 45°               | 26,951 |                     |  |
| 15°        | 0° - 60°   | 568                 | 85%       | 2  | 94  | 88                          | 82  | 92  | 86  | 81  | 88  | 84  | 80  | 10.0                | 3.4                    | 17.8          | 55°               | 21,820 |                     |  |
| 25°        | 0° - 90°   | 670                 | 100%      | 3  | 84  | 76                          | 70  | 82  | 75  | 70  | 79  | 73  | 68  | 12.0                | 2.4                    | 21.3          | 65°               | 18,172 |                     |  |
| 35°        | 90° - 180° | 0                   | 0%        | 4  | 75  | 67                          | 61  | 74  | 66  | 60  | 71  | 65  | 60  | 14.0                | 1.7                    | 24.9          | 75°               | 14,836 |                     |  |
| 45°        | 0° - 180°  | 670                 | 100%      | 5  | 68  | 60                          | 53  | 67  | 59  | 53  | 65  | 58  | 53  | Beam Angle: 83.2°   |                        |               | 85°               | 11,422 |                     |  |
| 55°        | 99         |                     |           | 6  | 62  | 53                          | 47  | 61  | 53  | 47  | 59  | 52  | 47  | Field Angle: 147.3° |                        |               |                   |        |                     |  |
| 65°        | 61         |                     |           | 7  | 57  | 48                          | 43  | 56  | 48  | 42  | 54  | 47  | 42  |                     |                        |               |                   |        |                     |  |
| 75°        | 31         |                     |           | 8  | 52  | 44                          | 39  | 51  | 44  | 38  | 50  | 43  | 38  |                     |                        |               |                   |        |                     |  |
| 85°        | 8          |                     |           | 9  | 48  | 40                          | 35  | 48  | 40  | 35  | 46  | 40  | 35  |                     |                        |               |                   |        |                     |  |
| 90°        | 0          |                     |           | 10 | 45  | 37                          | 32  | 44  | 37  | 32  | 43  | 37  | 32  |                     |                        |               |                   |        |                     |  |

**WF4 SWW5 90CRI \_ 3000K** Input Watts: 8.9, Delivered Lumens: 678, LPW: 76.2, S/MH: 1.09, Test No: ISF 202630P2



| CP Summary |            | Zonal Lumen Summary |           |    |     | Coefficients of Utilization |     |     |     |     |     |     |     |                     |                        | Cone of Light |                   |        | Luminance (cd/sq.m) |  |
|------------|------------|---------------------|-----------|----|-----|-----------------------------|-----|-----|-----|-----|-----|-----|-----|---------------------|------------------------|---------------|-------------------|--------|---------------------|--|
| 0°         | Zone       | Lumens              | % Fixture | pw | 50% | 30%                         | 10% | 50% | 30% | 10% | 50% | 30% | 10% | Mounting Height     | Initial FC Center Beam | Beam Diameter | Average Luminance |        |                     |  |
| 0°         | 0° - 30°   | 246                 | 36%       | 0  | 119 | 119                         | 119 | 116 | 116 | 116 | 111 | 111 | 111 | 6.0                 | 9.6                    | 10.7          | 0°                | 43,464 |                     |  |
| 5°         | 0° - 40°   | 374                 | 55%       | 1  | 106 | 102                         | 98  | 104 | 100 | 97  | 99  | 96  | 94  | 8.0                 | 5.4                    | 14.2          | 45°               | 27,273 |                     |  |
| 15°        | 0° - 60°   | 575                 | 85%       | 2  | 94  | 88                          | 82  | 92  | 86  | 81  | 88  | 84  | 80  | 10.0                | 3.5                    | 17.8          | 55°               | 22,081 |                     |  |
| 25°        | 0° - 90°   | 678                 | 100%      | 3  | 84  | 76                          | 70  | 82  | 75  | 70  | 79  | 73  | 68  | 12.0                | 2.4                    | 21.3          | 65°               | 18,389 |                     |  |
| 35°        | 90° - 180° | 0                   | 0%        | 4  | 75  | 67                          | 61  | 74  | 66  | 60  | 71  | 65  | 60  | 14.0                | 1.8                    | 24.9          | 75°               | 15,014 |                     |  |
| 45°        | 0° - 180°  | 678                 | 100%      | 5  | 68  | 60                          | 53  | 67  | 59  | 53  | 65  | 58  | 53  | Beam Angle: 83.2°   |                        |               | 85°               | 11,559 |                     |  |
| 55°        | 101        |                     |           | 6  | 62  | 53                          | 47  | 61  | 53  | 47  | 59  | 52  | 47  | Field Angle: 147.3° |                        |               |                   |        |                     |  |
| 65°        | 62         |                     |           | 7  | 57  | 48                          | 43  | 56  | 48  | 42  | 54  | 47  | 42  |                     |                        |               |                   |        |                     |  |
| 75°        | 31         |                     |           | 8  | 52  | 44                          | 39  | 51  | 44  | 38  | 50  | 43  | 38  |                     |                        |               |                   |        |                     |  |
| 85°        | 8          |                     |           | 9  | 48  | 40                          | 35  | 48  | 40  | 35  | 46  | 40  | 35  |                     |                        |               |                   |        |                     |  |
| 90°        | 0          |                     |           | 10 | 45  | 37                          | 32  | 44  | 37  | 32  | 43  | 37  | 32  |                     |                        |               |                   |        |                     |  |

**WF4 SWW5 90CRI \_ 3500K** Input Watts: 8.9, Delivered Lumens: 688, LPW: 77.3, S/MH: 1.09, Test No: ISF 202630P3



| CP Summary |            | Zonal Lumen Summary |           |    |     | Coefficients of Utilization |     |     |     |     |     |     |     |                     |                        | Cone of Light |                   |        | Luminance (cd/sq.m) |  |
|------------|------------|---------------------|-----------|----|-----|-----------------------------|-----|-----|-----|-----|-----|-----|-----|---------------------|------------------------|---------------|-------------------|--------|---------------------|--|
| 0°         | Zone       | Lumens              | % Fixture | pw | 50% | 30%                         | 10% | 50% | 30% | 10% | 50% | 30% | 10% | Mounting Height     | Initial FC Center Beam | Beam Diameter | Average Luminance |        |                     |  |
| 0°         | 0° - 30°   | 249                 | 36%       | 0  | 119 | 119                         | 119 | 116 | 116 | 116 | 111 | 111 | 111 | 6.0                 | 9.7                    | 10.7          | 0°                | 44,106 |                     |  |
| 5°         | 0° - 40°   | 379                 | 55%       | 1  | 106 | 102                         | 98  | 104 | 100 | 97  | 99  | 96  | 94  | 8.0                 | 5.5                    | 14.2          | 45°               | 27,676 |                     |  |
| 15°        | 0° - 60°   | 583                 | 85%       | 2  | 94  | 88                          | 82  | 92  | 86  | 81  | 88  | 84  | 80  | 10.0                | 3.5                    | 17.8          | 55°               | 22,407 |                     |  |
| 25°        | 0° - 90°   | 688                 | 100%      | 3  | 84  | 76                          | 70  | 82  | 75  | 70  | 79  | 73  | 68  | 12.0                | 2.4                    | 21.3          | 65°               | 18,661 |                     |  |
| 35°        | 90° - 180° | 0                   | 0%        | 4  | 75  | 67                          | 61  | 74  | 66  | 60  | 71  | 65  | 60  | 14.0                | 1.8                    | 24.9          | 75°               | 15,235 |                     |  |
| 45°        | 0° - 180°  | 688                 | 100%      | 5  | 68  | 60                          | 53  | 67  | 59  | 53  | 65  | 58  | 53  | Beam Angle: 83.2°   |                        |               | 85°               | 11,730 |                     |  |
| 55°        | 102        |                     |           | 6  | 62  | 53                          | 47  | 61  | 53  | 47  | 59  | 52  | 47  | Field Angle: 147.3° |                        |               |                   |        |                     |  |
| 65°        | 63         |                     |           | 7  | 57  | 48                          | 43  | 56  | 48  | 42  | 54  | 47  | 42  |                     |                        |               |                   |        |                     |  |
| 75°        | 31         |                     |           | 8  | 52  | 44                          | 39  | 51  | 44  | 38  | 50  | 43  | 38  |                     |                        |               |                   |        |                     |  |
| 85°        | 8          |                     |           | 9  | 48  | 40                          | 35  | 48  | 40  | 35  | 46  | 40  | 35  |                     |                        |               |                   |        |                     |  |
| 90°        | 0          |                     |           | 10 | 45  | 37                          | 32  | 44  | 37  | 32  | 43  | 37  | 32  |                     |                        |               |                   |        |                     |  |



# Juno Wafer™ LED Downlight Series

## 4" LED Ultra-Thin Wafer Switchable Downlight 670 Lumens



### PHOTOMETRICS

Distribution Curve

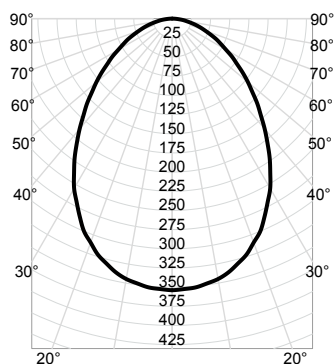
Distribution Data

Output Data

Coefficient of Utilization

Illuminance Data at 30" Above Floor for a Single Luminaire

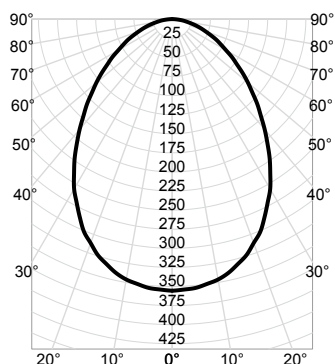
**WF4 SWW5 90CRI \_ 4000K** Input Watts: 8.9, Delivered Lumens: 695, LPW: 78.1, S/MH: 1.09, Test No: ISF 202630P4



| CP Summary | Zonal Lumen Summary |            |        |           | Coefficients of Utilization |     |     |     |     |     |     |                 |                        |               | Cone of Light     |      |     | Luminance (cd/sq.m) |  |
|------------|---------------------|------------|--------|-----------|-----------------------------|-----|-----|-----|-----|-----|-----|-----------------|------------------------|---------------|-------------------|------|-----|---------------------|--|
|            | 0°                  | Zone       | Lumens | % Fixture | pw                          | 80% |     | 20% |     | 50% |     | Mounting Height | Initial FC Center Beam | Beam Diameter | Average Luminance |      |     |                     |  |
|            |                     |            |        |           |                             | 50% | 30% | 10% | 50% | 30% | 10% |                 |                        |               |                   | 50%  | 30% | 10%                 |  |
| 0°         | 354                 | 0° - 30°   | 252    | 36%       | 0                           | 119 | 119 | 119 | 116 | 116 | 111 | 111             | 111                    | 6.0           | 9.8               | 10.7 | 0°  | 44,555              |  |
| 5°         | 352                 | 0° - 40°   | 383    | 55%       | 1                           | 106 | 102 | 98  | 104 | 100 | 97  | 99              | 96                     | 8.0           | 5.5               | 14.2 | 45° | 27,958              |  |
| 15°        | 331                 | 0° - 60°   | 589    | 85%       | 2                           | 94  | 88  | 82  | 92  | 86  | 81  | 88              | 84                     | 10.0          | 3.5               | 17.8 | 55° | 22,635              |  |
| 25°        | 285                 | 0° - 90°   | 695    | 100%      | 3                           | 84  | 76  | 70  | 82  | 75  | 70  | 79              | 73                     | 12.0          | 2.5               | 21.3 | 65° | 18,851              |  |
| 35°        | 222                 | 90° - 180° | 0      | 0%        | 4                           | 75  | 67  | 61  | 74  | 66  | 60  | 71              | 65                     | 14.0          | 1.8               | 24.9 | 75° | 15,391              |  |
| 45°        | 157                 | 0° - 180°  | 695    | 100%      | 5                           | 68  | 60  | 53  | 67  | 59  | 53  | 65              | 58                     |               |                   |      | 85° | 11,849              |  |
| 55°        | 103                 |            |        |           | 6                           | 62  | 53  | 47  | 61  | 53  | 47  | 59              | 52                     |               |                   |      |     |                     |  |
| 65°        | 63                  |            |        |           | 7                           | 57  | 48  | 43  | 56  | 48  | 42  | 54              | 47                     |               |                   |      |     |                     |  |
| 75°        | 32                  |            |        |           | 8                           | 52  | 44  | 39  | 51  | 44  | 38  | 50              | 43                     |               |                   |      |     |                     |  |
| 85°        | 8                   |            |        |           | 9                           | 48  | 40  | 35  | 48  | 40  | 35  | 46              | 40                     |               |                   |      |     |                     |  |
| 90°        | 0                   |            |        |           | 10                          | 45  | 37  | 32  | 44  | 37  | 32  | 43              | 37                     |               |                   |      |     |                     |  |

Beam Angle: 83.2°  
Field Angle: 147.3°

**WF4 SWW5 90CRI \_ 5000K** Input Watts: 8.9, Delivered Lumens: 698, LPW: 78.4, S/MH: 1.09, Test No: ISF 202630P5



| CP Summary | Zonal Lumen Summary |            |        |           | Coefficients of Utilization |     |     |     |     |     |     |                 |                        |               | Cone of Light     |      |     | Luminance (cd/sq.m) |  |
|------------|---------------------|------------|--------|-----------|-----------------------------|-----|-----|-----|-----|-----|-----|-----------------|------------------------|---------------|-------------------|------|-----|---------------------|--|
|            | 0°                  | Zone       | Lumens | % Fixture | pw                          | 80% |     | 20% |     | 50% |     | Mounting Height | Initial FC Center Beam | Beam Diameter | Average Luminance |      |     |                     |  |
|            |                     |            |        |           |                             | 50% | 30% | 10% | 50% | 30% | 10% |                 |                        |               |                   | 50%  | 30% | 10%                 |  |
| 0°         | 356                 | 0° - 30°   | 253    | 36%       | 0                           | 119 | 119 | 119 | 116 | 116 | 111 | 111             | 111                    | 6.0           | 9.9               | 10.7 | 0°  | 44,748              |  |
| 5°         | 353                 | 0° - 40°   | 385    | 55%       | 1                           | 106 | 102 | 98  | 104 | 100 | 97  | 99              | 96                     | 8.0           | 5.6               | 14.2 | 45° | 28,079              |  |
| 15°        | 332                 | 0° - 60°   | 592    | 85%       | 2                           | 94  | 88  | 82  | 92  | 86  | 81  | 88              | 84                     | 10.0          | 3.6               | 17.8 | 55° | 22,733              |  |
| 25°        | 286                 | 0° - 90°   | 698    | 100%      | 3                           | 84  | 76  | 70  | 82  | 75  | 70  | 79              | 73                     | 12.0          | 2.5               | 21.3 | 65° | 18,933              |  |
| 35°        | 223                 | 90° - 180° | 0      | 0%        | 4                           | 75  | 67  | 61  | 74  | 66  | 60  | 71              | 65                     | 14.0          | 1.8               | 24.9 | 75° | 15,457              |  |
| 45°        | 158                 | 0° - 180°  | 698    | 100%      | 5                           | 68  | 60  | 53  | 67  | 59  | 53  | 65              | 58                     |               |                   |      | 85° | 11,901              |  |
| 55°        | 104                 |            |        |           | 6                           | 62  | 53  | 47  | 61  | 53  | 47  | 59              | 52                     |               |                   |      |     |                     |  |
| 65°        | 64                  |            |        |           | 7                           | 57  | 48  | 43  | 56  | 48  | 42  | 54              | 47                     |               |                   |      |     |                     |  |
| 75°        | 32                  |            |        |           | 8                           | 52  | 44  | 39  | 51  | 44  | 38  | 50              | 43                     |               |                   |      |     |                     |  |
| 85°        | 8                   |            |        |           | 9                           | 48  | 40  | 35  | 48  | 40  | 35  | 46              | 40                     |               |                   |      |     |                     |  |
| 90°        | 0                   |            |        |           | 10                          | 45  | 37  | 32  | 44  | 37  | 32  | 43              | 37                     |               |                   |      |     |                     |  |

Beam Angle: 83.2°  
Field Angle: 147.3°