

IC-Rated 600 Lumen LED Downlights, Gen 4

Refined, ultra-efficient, high-performance illumination for residential, retail and commercial applications



Juno® IC-Rated 600 Lumen LED Downlights, Gen 4

Featuring improved 90 CRI color rendering

The Generation 4 line of recessed LED downlights is just what you'd expect from Juno. It's the most all-inclusive LED downlight lineage, including 4", 5", and 6" apertures with higher performance, better color rendering and new hyperbolic trims. Juno Generation 4 Recessed LED downlights are ENERGY STAR® certified and are compliant with the latest California Title 24 energy code.

Juno 4" IC-Rated 600 Lumen Generation 4 LED Downlights

4" New Construction



Shown with universal voltage driver.

12¼" L x 6¾" W x 6" H
Ceiling cutout: 4½"



IC1LED & IC1RLED G4 Series

Dedicated 4" LED new construction and remodel housings with integral light engine and choice of dimmable drivers: 11.7W nominal dedicated 120 volt driver with forward phase and ELV dimming or 12.6W nominal universal 120V-277V driver with 0-10V dimming. Shallow housing construction allows for fit in 2 x 6 construction. Air-Loc® gasket kit (Remodel only) supplied with housing. IC housing designed for use with IC or non-IC construction. Wide flood optic provided as standard.

4" Remodel



Shown with dedicated 120 volt driver.

14½" L x 4¾" W x 4¾" H
Ceiling cutout: 4¾"



Example: IC1LED G4 06LM 27K 90CRI 120 FRPC

Series	Generation	Lumens	CCT	CRI	Voltage/Driver
IC1LED 4" New Construction Housing	G4	06LM 600 Lumens	27K 2700K	90CRI	120 FRPC 120V Only; Forward Phase/ ELV Dimming
			30K 3000K		
			35K 3500K		
40K 4000K					
IC1RLED 4" Remodel Housing					MVOLT ZT Universal 120-277V; 0-10V Dimming

* Also available with WarmDim® technology.

4" LED Downlight Trims

Downlights



Pinhole with Integral Shield

13 WH
2" Aperture



Baffle

14 BWH Black
14 BSC Black
14 BABZ Black
14 BBL Black
14 BWH White
3¾" Aperture



Cone

17 CWH Clear Alzak®
17 GWH Gold Alzak®
17 BWH Black Alzak®
17 PTSC Pewter Alzak®
17 WWH Gloss White
17 HZWH Haze
17 WHZWH Wheat Haze
17 WHZABZ Wheat Haze
3¾" Aperture

Decorative



Beveled Cylinder

4103 FROSTWH
4103 FROSTSC
3" Aperture



Beveled Cone

4104 HZSC Haze
4104 WHZABZ Wheat Haze
3¾" Aperture



Glass Cylinder

4150 MESHSC
2½" Aperture

Hyperbolic



17HYP2 CWH Clear Alzak®
17HYP2 BWH Black Alzak®
17HYP2 WWH White
17HYP2 HZWH Haze
17HYP2 WHZWH Wheat Haze
17HYP2 WHZABZ Wheat Haze

Lensed



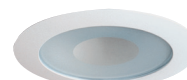
Wall Wash

39 CWH Clear Alzak®
39 HZWH Haze
39 WWH Gloss White
39 WHZWH Wheat Haze



Drop Opal

11 WH



Frosted Lens with Clear Center

12 WWH
12 WSC
12 WABZ



Beveled Dome - Lensed

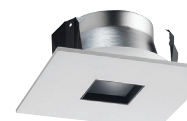
4101 ABZ
4101 SC
4101 WH



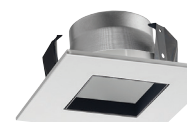
Beveled Lens

4102 ABZ
4102 SC
4102 WH

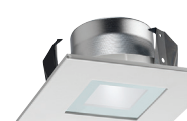
Square Trims



13SQ WH White Trim



17SQ HZWH Haze, White Trim
17SQ WWH White, White Trim
17SQ BWH Black, White Trim
17SQ WHZWH Wheat Haze



Frosted Lens with Clear Center
12SQ WWH White Trim

Juno 5" IC-Rated 600 Lumen Generation 4 LED Downlights

5" New Construction



IC20LED & IC20RLED G4 Series
 Dedicated 5" LED new construction and remodel housings with integral light engine and choice of dimmable drivers: 11.7W nominal dedicated 120 volt driver with forward phase and ELV dimming or 12.6W nominal universal 120V-277V driver with 0-10V dimming. Shallow housing construction allows for fit in 2 x 6 construction. Air-Loc gasket kit (Remodel only) supplied with housing. IC housing designed for use with IC or non-IC construction. Wide flood optic provided as standard.

Shown with universal voltage driver.

15½" L x 9½" W x 4⅞" H
 Ceiling cutout: 5⅞"

5" Remodel



Shown with dedicated 120 volt driver.

13½" L x 5⅞" W x 4⅞" H
 Ceiling cutout: 5½"

Example: IC20LED G4 06LM 27K 90CRI 120 FRPC

Series	Generation	Lumens	CCT	CRI	Voltage/Driver
IC20LED 5" New Construction Housing	G4	06LM 600 Lumens	27K 2700K	90CRI	120 FRPC 120V Only; Forward Phase/ ELV Dimming
			30K 3000K		
			35K 3500K		
			40K 4000K		
IC20RLED 5" Remodel Housing					MVOLT ZT Universal 120-277V; 0-10V Dimming

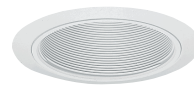
* Also available with WarmDim® technology.

ENERGY STAR® and T24 certification is dependent on trim finish and LED color temperature. See housing spec sheet for specific information for each trim.

* Do not use reflector shipped with trim for LED housing. Discard or recycle reflector.

5" LED Downlight Trims

Downlights



Downlight Baffle

205 WWH White
205 BWH Black
205 BSC Black
205 BABZ Black
 4⅜" Aperture



Downlight Cone

204 CWH Clear Alzak®
204 GWH Gold Alzak®
204 BWH Black Alzak®
204 PTSC Pewter Alzak®
204 WWH Gloss White
204 HZWH Haze
204 WHZWH Wheat Haze
204 WHZABZ Wheat Haze
 4⅜" Aperture

Wall Wash



213G3 WWH White
213G3 BWH Black

Hyperbolic



204HYP2 CWH Clear Alzak®
204HYP2 BWH Black Alzak®
204HYP2 WWH White
204HYP2 HZWH Haze
204HYP2 WHZWH Wheat Haze
204HYP2 WHZABZ Wheat Haze

Lensed



Flat Glass Shower Trim*

210N ABZ
210N SC
210N WH



Frosted Lens with Clear Center*

212N ABZ
212N SC
212N WH



White Baffle, Regressed Frosted Dome Lens*

2130 WWH White
2130 BWH Black



Beveled Frame, Frosted Dome Lens*

5101 ABZ
5101 SC
5101 WH

Juno 6" IC-Rated 600 Lumen Generation 4 LED Downlights

6" New Construction



Shown with universal voltage driver.

15 1/2" L x 9 1/8" W x 4 7/8" H
Ceiling cutout: 6 3/4"



IC22LED & IC22RLED G4 Series
Dedicated 6" LED new construction and remodel housings with integral light engine and choice of 11.7W nominal dedicated 120 volt driver with forward phase and ELV dimming or 12.6W nominal universal 120V-277V driver with 0-10V dimming. Shallow housing construction allows for fit in 2 x 6 construction. Air-Loc® gasket kit (Remodel only) supplied with housing. IC housing designed for use with IC or non-IC construction. Wide flood optic provided as standard.

6" Remodel



Shown with dedicated 120 volt driver.

14 1/2" L x 7 1/4" W x 5 1/8" H
Ceiling cutout: 6 3/4"



Example: IC22LED G4 06LM 27K 90CRI 120 FRPC

Series	Generation	Lumens	CCT	CRI	Voltage/Driver
IC22LED 6" New Construction Housing	G4	06LM 600 Lumens	27K 2700K	90CRI	120 FRPC 120V Only; Forward Phase/ ELV Dimming
			30K 3000K		
			35K 3500K		
			40K 4000K		
IC22RLED 6" Remodel Housing					MVOLT ZT Universal 120-277V; 0-10V Dimming

* Also available with WarmDim® technology.

ENERGY STAR® and T24 certification is dependent on trim finish and LED color temperature. See housing spec sheet for specific information for each trim.

* Do not use reflector shipped with trim for LED housing. Discard or recycle reflector.

Photo Credits:

Cover: Private Residence, St. Charles, IL (Pictureboy Photography)

6" LED Downlight Trims

Downlights



Downlight Baffle

24 WWH White
24 BWH Black
24 BSC Black
24 BABZ Black
24 BBL Black
5 3/4" Aperture



Downlight Cone

27 CWH Clear Alzak®
27 GWH Gold Alzak®
27 BWH Black Alzak®
27 PTSC Pewter Alzak®
27 WWH Gloss White
27 HZWH Haze
27 WHZWH Wheat Haze
27 WHZABZ Wheat Haze
5 3/4" Aperture



Decorative



Octagonal

9024 WWH
5 3/4" Aperture



Luminous Disc (Frosted)

9324 SC
3 1/4" Aperture



Metal Band

9524 SC
5 7/8" Aperture



Luminous Collar (Frosted)

9702
6 3/8" Aperture

Wall Wash



Wall Wash

262G3 WWH White
262G3 BWH Black

Lensed



Albalite

20 PW Shower/Closet Light
20 WH



Drop Opal

21 PW Shower/Closet Light
21 WH



Fresnel

22 WH



Frosted Lens*

239 WH



Frosted Lens with Clear Center

242 ABZ
242 SC
242 WH



Decorative Swirled Etched Opal Glass*

243 WH



White Baffle, Regressed Frosted Dome Lens*

2330 WWH White
2330 BWH Black



Beveled Frame, Frosted Dome Lens*

6101 ABZ
6101 SC
6101 WH

Hyperbolic



27HYP2 CWH Clear Alzak®
27HYP2 BWH Black Alzak®
27HYP2 WWH White
27HYP2 HZWH Haze
27HYP2 WHZWH Wheat Haze
27HYP2 WHZABZ Wheat Haze



©2017 Acuity Brands Lighting, Inc. The marks appearing in this catalog are trademarks of Acuity Brands Lighting, Inc. Products shown in this brochure may be covered by U.S. and international patents and patents pending. Specifications subject to change without notice. Printed in the U.S.A.