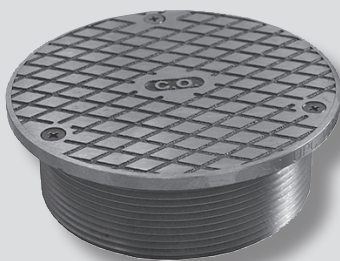


Cast Iron Commercial Cleanout Components

Pages 258-259

F

SIZES: 2", 3", 3-1/2", 4", 5", 6"



For use in
commercial applications.

No Hub Cleanout Body



PART NO.	PIPE SIZE	TAP SIZE	HEIGHT	CTN/MSTR
C37102	2" Body	1-1/2"	2-1/8"	1/10
C37103	3" Body	2-1/2"	2-1/8"	1/10
C37104	4" Body	3-1/2"	2-1/8"	1/10

Plain End Cast Iron Cleanout Short Pattern



- Short pattern less plug
- Fits flush with hub

PART NO.	PIPE SIZE	TAP SIZE	HEIGHT	CTN/MSTR
C37302	2"	1-1/2"	2-3/4"	1/12
C37303	3"	2-1/2"	3-1/2"	1/12
C37304	4"	3"	3"	1/8
C37314	4"	3-1/2"	3"	1/8

Plain End Cast Iron Cleanout Long Pattern



- Long pattern less plug
- Meets ASTM A-74

PART NO.	PIPE SIZE	TAP SIZE	HEIGHT	CTN/MSTR
C37002	2"	1-1/2"	2-3/4"	1/12
C37003	3"	2-1/2"	4"	1/12
C37004	4"	3"	4"	1/8
C37014	4"	3-1/2"	4"	1/8
C37005	5"	4"	3-1/2"	1/4
C37006	6"	5"	4"	1/2

No Hub Base



- Use with CI strainers or covers for heavy trucking traffic
- Use with PB, NB, SS or CP strainers or covers for heavy pedestrian traffic

PART NO.	PIPE SIZE	TAP SIZE	HEIGHT	CTN/MSTR
D63300	3"	3" IPS	4-1/4"	1/1
D63349	3"	3-1/2 IPS	4-1/4"	1/1
D63350	4"	3-1/2 IPS	4-1/4"	1/1
D63400	4"	4" IPS	4-1/4"	1/1