

# WARNING

INSPECT ITEM CAREFULLY BEFORE ATTEMPTING TO INSTALL. IF THERE IS ANY DAMAGE OR OBVIOUS DEFECT, DO NOT INSTALL. ITEM MAY NOT BE RETURNED ONCE IT HAS BEEN INSTALLED.

## CARE AND MAINTENANCE

To clean the outside of the fixture, use a dry or slightly dampened clean cloth (use clean water, never a solvent) to wipe the surface of the fixture.








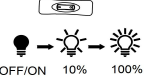
To clean the inside of the fixture, first disconnect power to the fixture by turning off the circuit breaker or by removing the fuse at the fuse box. Next, use a dry or slightly dampened clean cloth (use clean water, never a solvent) to wipe the interior surface of the fixture.

Do not use any cleaners with chemical, solvents or harsh abrasives. Use only a dry soft cloth to dust or wipe carefully.

## NOTICE& IMPORTANT SAFETY INSTRUCTIONS

- \* Please make sure that you have all parts indicated before you begin assembly of this item
- \* This item should be assembled on a soft surface to prevent scratching the finish during assembly
- \* To reduce the risk of fire, electrical shock or injury to persons or property, please follow the guideline below for safe use and installation
- \*The external flexible cable or cord of this lamp cannot be replaced  
If the cord is damaged, the lamp shall be destroyed

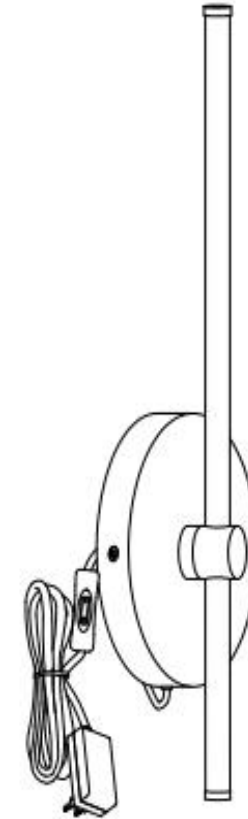
## Part List and Hardware List

PIECE	DESCRIPTION	PICTURE	QUANTITY	PIECE	DESCRIPTION	PICTURE	QUANTITY
A	mounting bracket		1X	E	machine screw		2X
B	tapping screw		2X	F	machine screw		2X
C	Wall plug		2X	G	plug		1X
D	lamp body		1X	H	dimmer switch	 OFF/ON 10% 100%	1X

# JONATHAN Y

Model#: JYL7136

Product Dimensions: 4.75"Lx2.25"Wx27.25"H



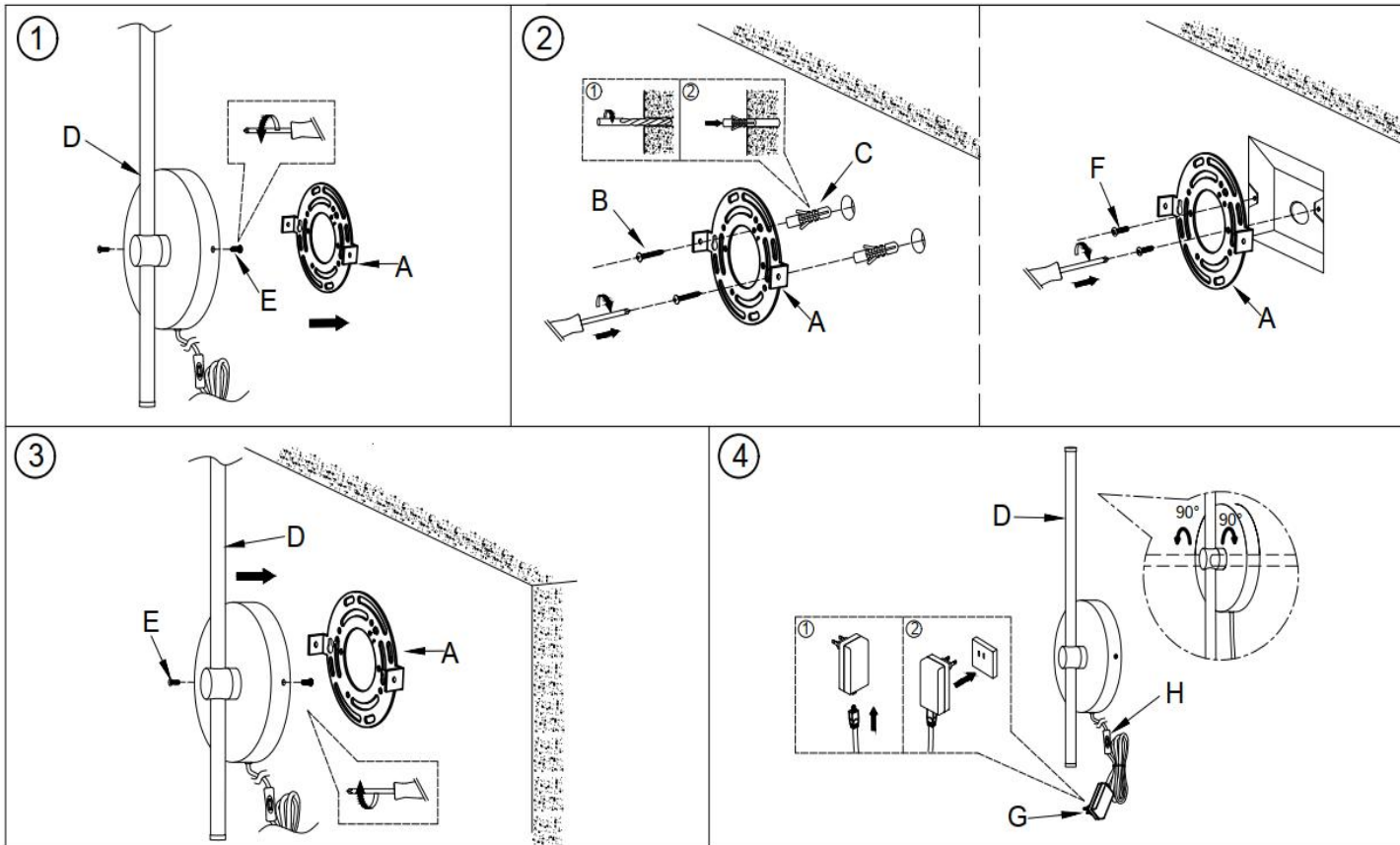
## PREPARATION

Before beginning assembly of product, make sure all parts are present. Compare parts with package contents list and hardware contents list. If any part is missing or damaged, do not attempt to assemble the product.

Estimated Assembly Time: 20 minutes.

If there are any questions relating to defects, missing parts, assembly issues, replacements, or device connectivity issues, please send a detailed email to [cs@jonathany.com](mailto:cs@jonathany.com)

1. Remove lamps and accessories from the box. Unscrew mounting screw (E) from the lamp body and remove mounting bracket (A).
2. Make holes and attach the wall plug (C) to the wall. Fix the mounting bracket (A) to the outlet box with self-tapping screws (B) and mounting screws (F).



3. Fix the lamp body (D) on the mounting bracket (A) with the mounting screw (E)
4. Connect plug (G) to lamp body (D) and adjust lamp body. Insert plug (G) into the power outlet and adjust the light source with dimmer switch (H). Complete the installation.

ENJOY YOUR LAMP