



www.johnsonhardware.com

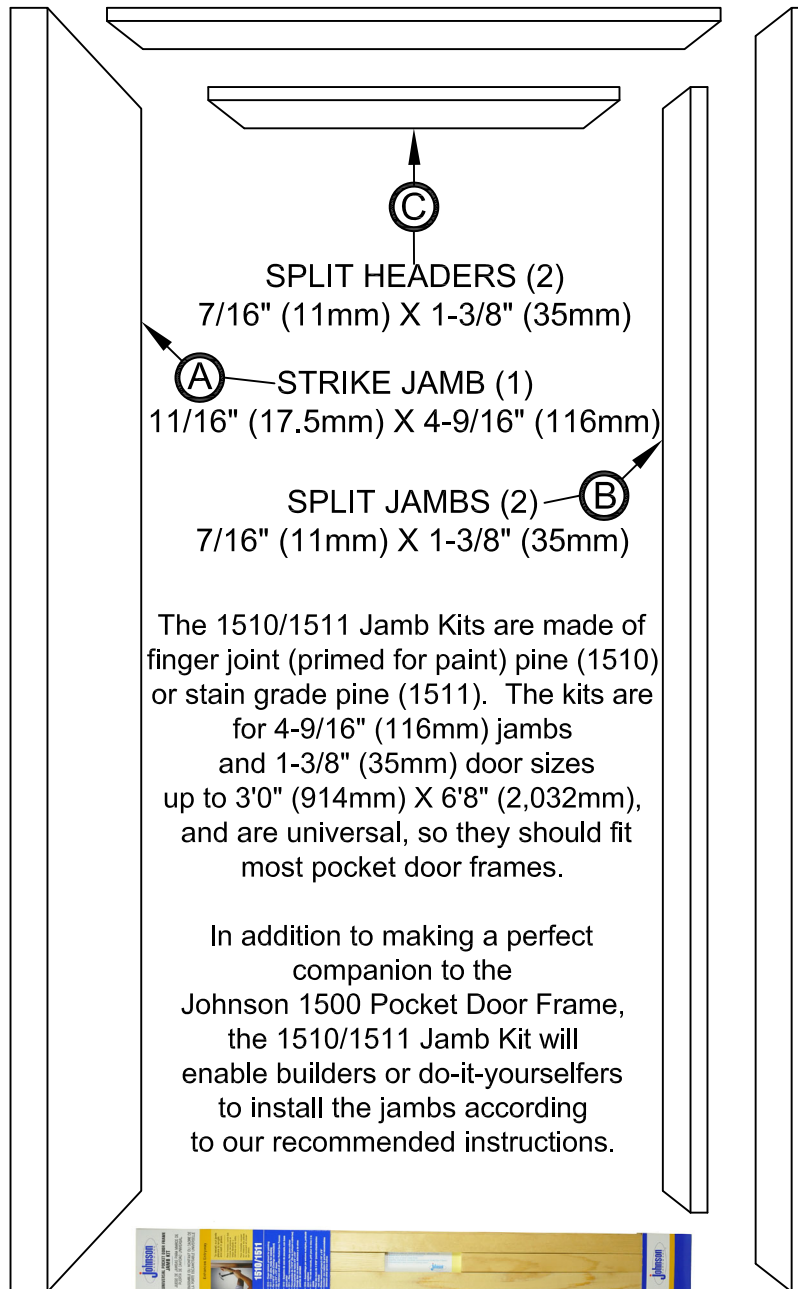
INSTRUCTIONS

1510/1511 SERIES POCKET DOOR FRAME JAMB KIT

For 4-9/16" (116mm) WALLS
FITS UP TO
3'0" (914mm) X 6'8" (2,032mm) DOORS
FOR 1-3/8" (35mm) DOORS ONLY

GENERAL DESCRIPTION

A fast, convenient method of finishing Pocket Door Frames.
Just cut to length and install--no ripping of special thickness stock.
Pre-sanded so finishing is a snap.
(Since a wide variety of casings are available, they are not included.)





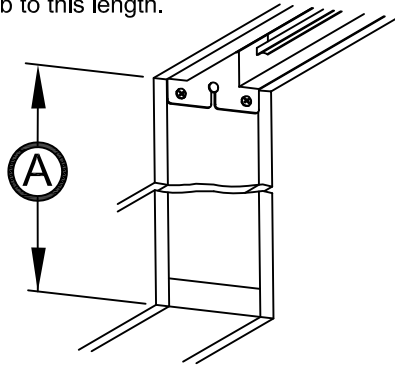
www.johnsonhardware.com

INSTRUCTIONS

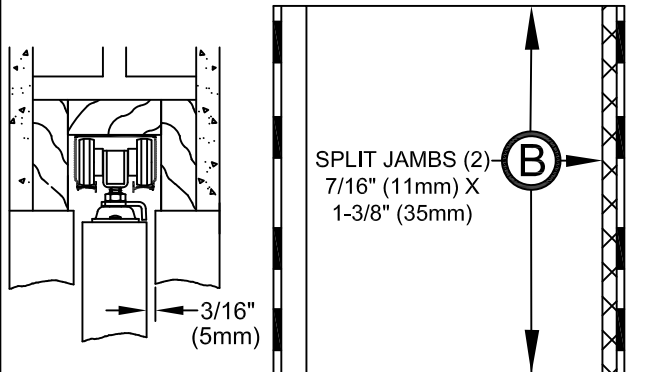
1510/1511 SERIES POCKET DOOR FRAME JAMB KIT

For 4-9/16" (116mm) WALLS
FITS UP TO
3'0" (914mm) X 6'8" (2,032mm) DOORS
FOR 1-3/8" (35mm) DOORS ONLY

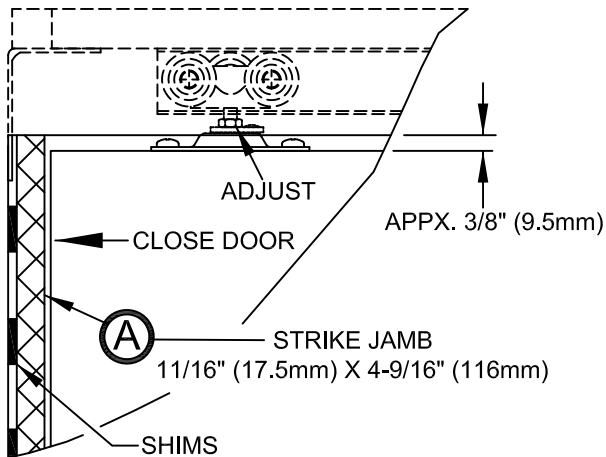
- 1 INSTALL** Pocket Door Frame following instructions as normal, including drywalling around opening. Carefully measure height "A" (from floor to bottom of frame header). Cut 11/16" (17.5mm) X 4-9/16" (2,032mm) Strike Jamb to this length.



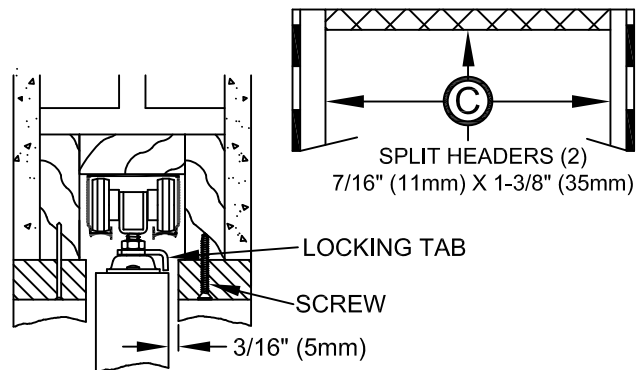
- 2 OPEN** door fully (door will protrude into opening) and cut split jambs to "B" Fasten to front edge of frame. Maintain minimum 3/16" (4.7mm) clearance on both sides of door. Raise or lower hangers to plumb door with split jambs.



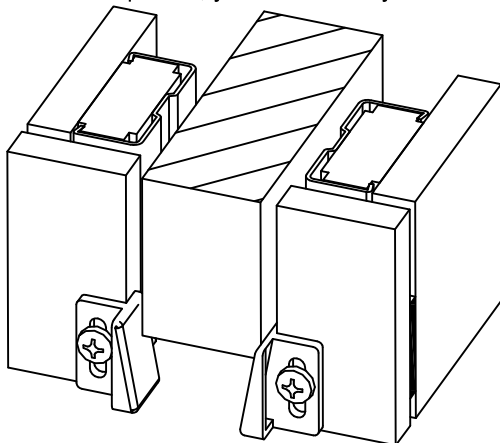
- 3 SHIM** and plumb strike jamb (wide piece) with door.



- 4 CAREFULLY** cut split headers to "C" determine side of hangers with lock arm and fasten this header with screws for easy removal. Nail other side. Here, too, maintain 3/16" (4.7mm) on each side of door.



- 5 FASTEN** bottom door guides so that door stays in center of pocket, yet travels easily without binding.



- 6 FINISH** with your choice of casings (not included).

