

INSTALLATION INSTRUCTIONS • ORIONIS SERIES

KIT-SD121 – ORIONIS SURFACE MOUNT



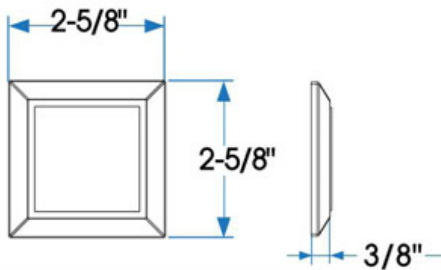
SAVE THESE INSTRUCTIONS

IMPORTANT SAFETY INSTRUCTIONS

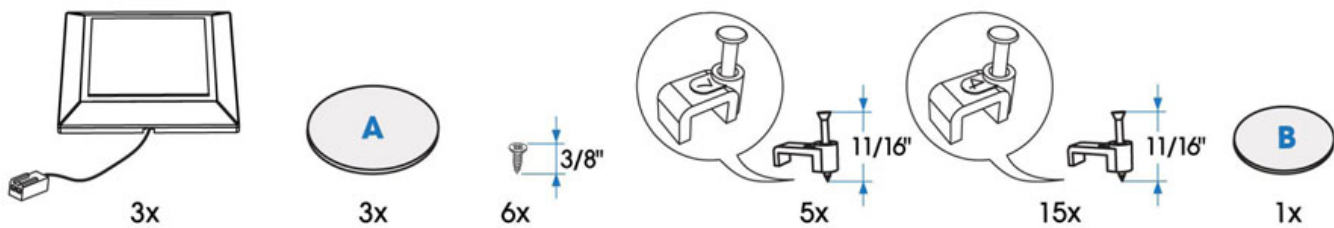
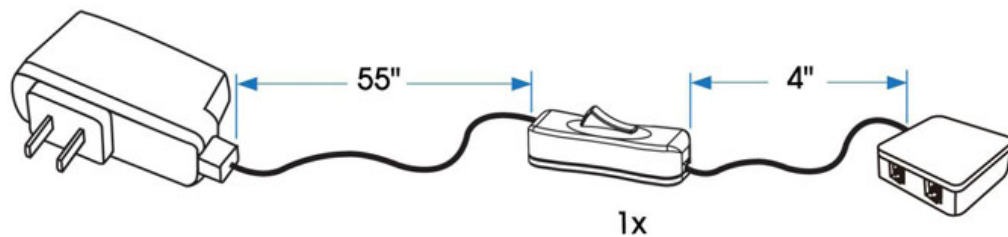
When installing or using this product, basic safety precautions should always be followed including the following:

1. Read all instructions before attempting to install this product.
2. For indoor use only. Do not install this product in damp or wet locations.
3. Regularly check the cords, power supply, light source, and all other parts for damage. If any part is damaged do not use or install this product.
4. Ensure main power is off before installing or wiring this product.
5. Disconnect electrical power before adding to or changing the configuration of this product.
6. The light sources are non-changeable light emitting diodes (LED). Do not disassemble this product.

Dimensions in inches

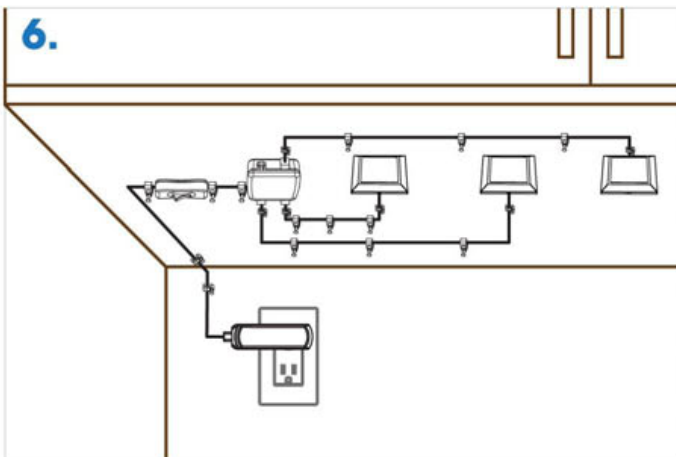
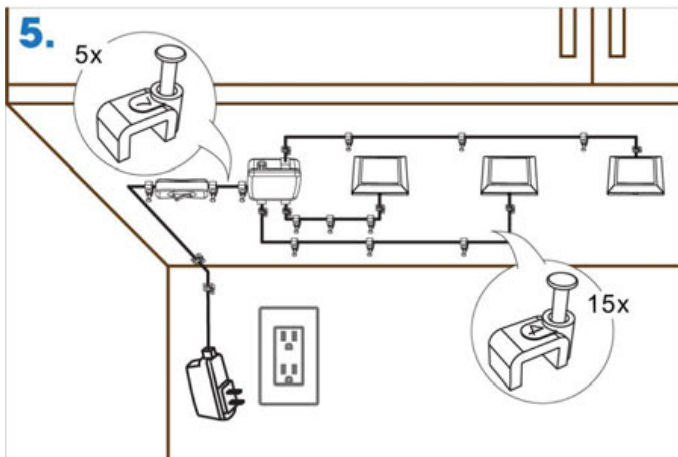
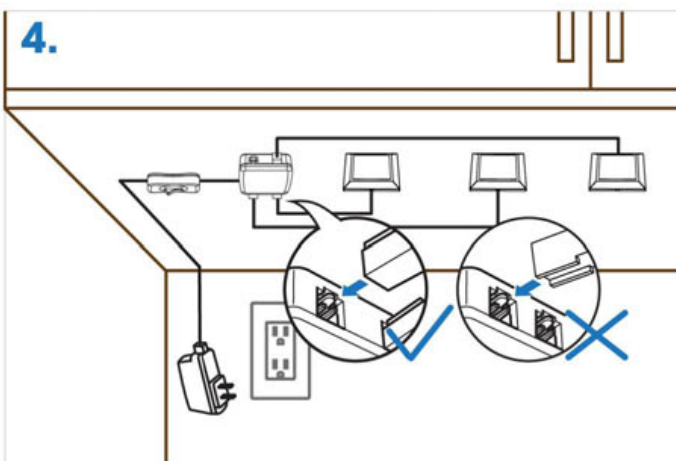
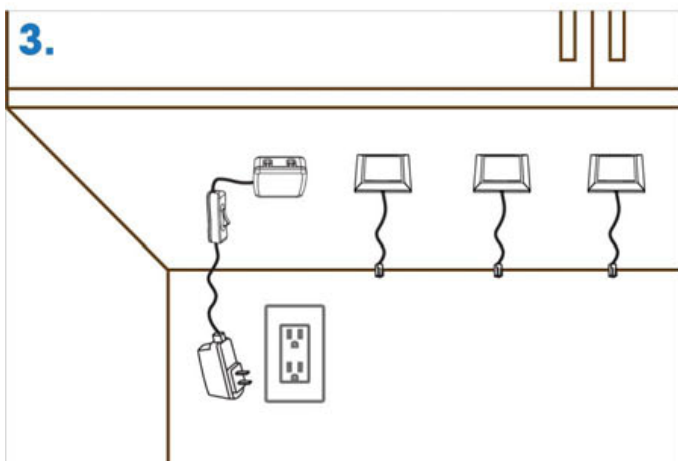
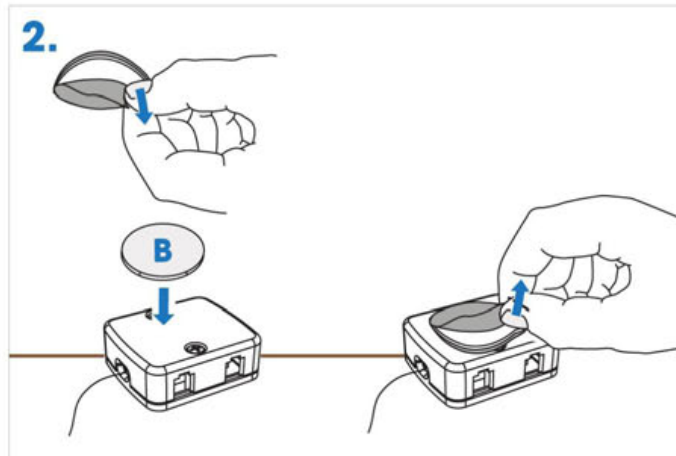
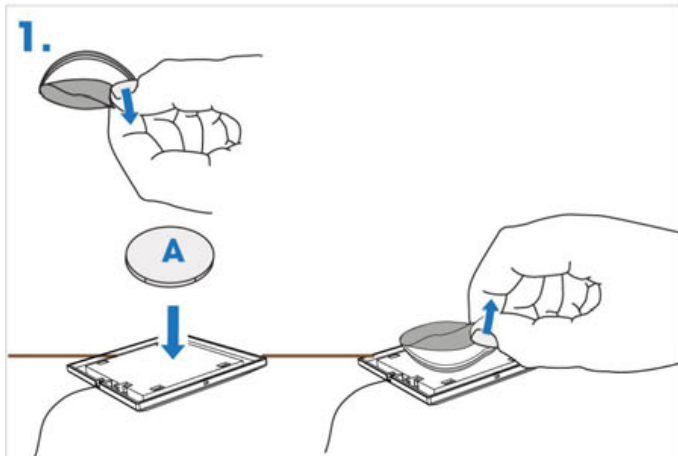


Model	Rated input	Power	Ambient Temperature
SD121-CV-35-30-S	24VDC	1.25W	-4°F~95°F°



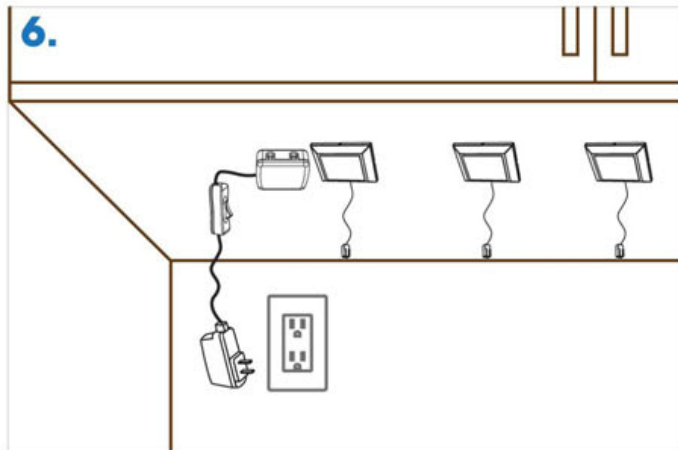
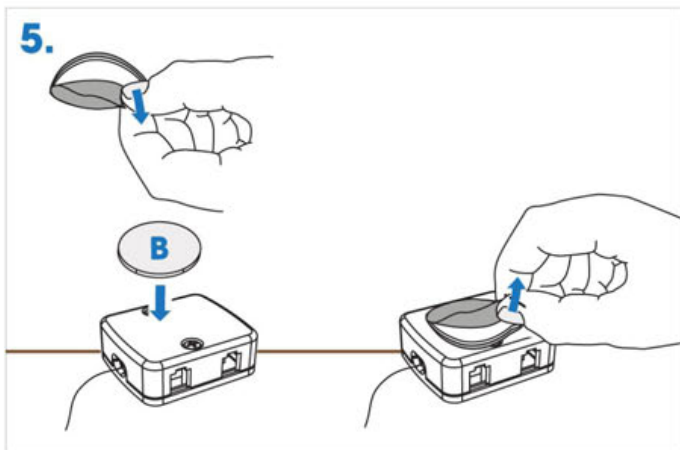
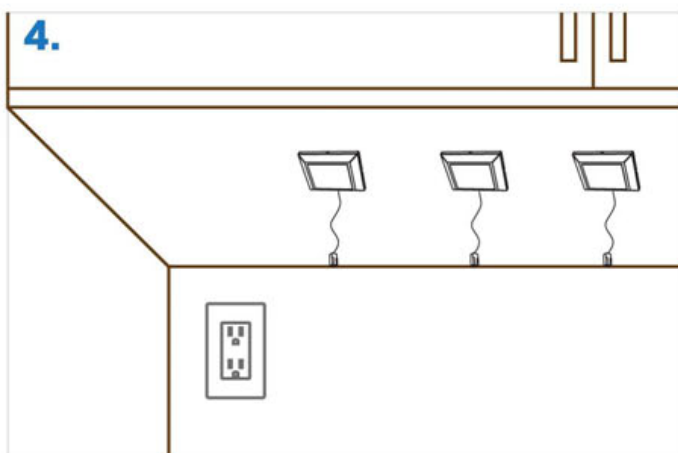
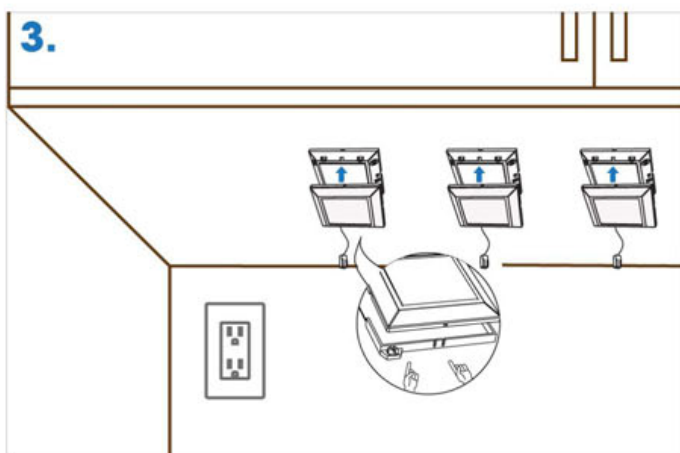
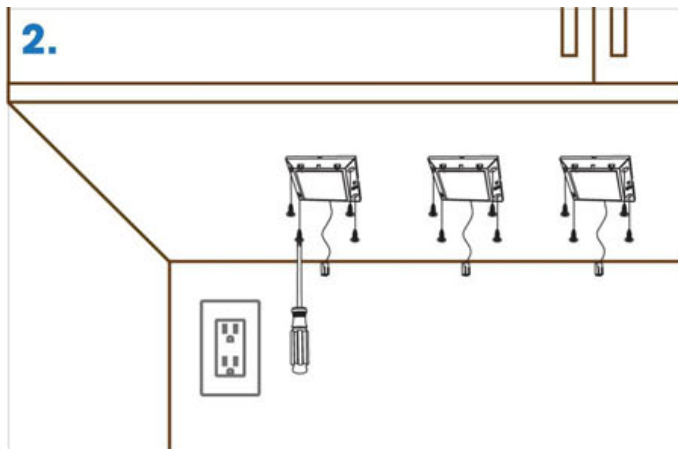
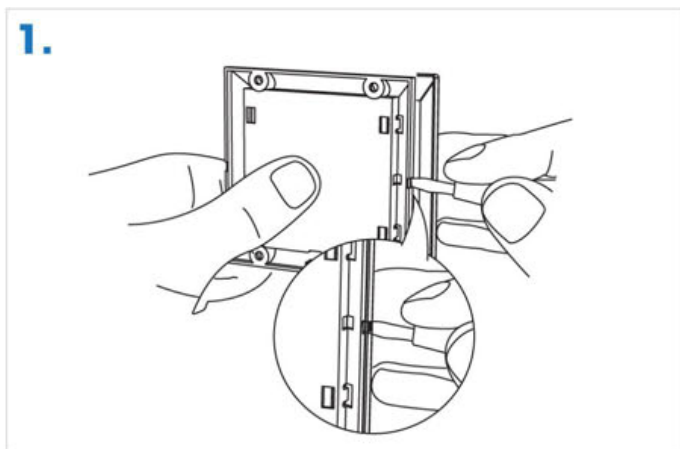
INSTALLATION INSTRUCTIONS • ORIONIS SERIES

KIT-SD121 – ORIONIS SURFACE MOUNT



INSTALLATION INSTRUCTIONS • ORIONIS SERIES

KIT-SD121 – ORIONIS SURFACE MOUNT



INSTALLATION INSTRUCTIONS • ORIONIS SERIES

KIT-SD121 – ORIONIS SURFACE MOUNT

