



IMPORTANT SAFETY INSTRUCTIONS

Please read carefully before using product. Protect yourself and others by observing all safety information, warnings and cautions. Failure to comply with instructions could result in personal injury and/or damage to product or property. *Please retain instruction sheet for future reference.*

When installing or using this product, basic safety precautions should always be followed including the following:

1. Read all instructions before attempting to install this product.
2. Ensure main power is off before installing or wiring this product.
3. Ensure correct voltage is being used for this product.
4. Do not use if there is visible damage to the fixture or cord insulation. Inspect periodically.
5. Do not install in direct sunlight to avoid damaging the phosphor on the LEDs.
6. Must be installed in an indoor dry location.
7. Disconnect electrical power before adding to or changing the configuration of this product.
8. Fixtures must be installed by a qualified/certified electrician in accordance with all national and local electrical and construction codes and regulations.

CAUTION

<p>DO NOT BEND ON HORIZONTAL PLANE</p>	<p>90° BENDS ONLY AT CUT MARKS</p>	<p>2" INCH RADIUS</p>	<p>FIELD CUTTABLE AT CUT MARKS</p>	<p>DO NOT POWER ON WHEN STRIP LIGHT IS IN A SPOOL</p>
<p>DO NOT OVERLAP</p>	<p>DO NOT TWIST</p>	<p>DO NOT HANG</p>	<p>DO NOT SUSPEND</p>	<p>DO NOT COVER</p>
<p>DO NOT INSTALL INSIDE BUILDING STRUCTURES</p>	<p>DO NOT PAINT OVER ANY PARTS</p>	<p>DO NOT PRESS DOWN ON LED</p>	<p>DO NOT STEP ON OR PUT OBJECTS ON TOP</p>	<p>DO NOT USE THIRD PARTY FASTENERS OR ADHESIVES</p>

VIOLATING ANY OF THE ABOVE **WILL VOID WARRANTY**



INSTALLATION INSTRUCTIONS

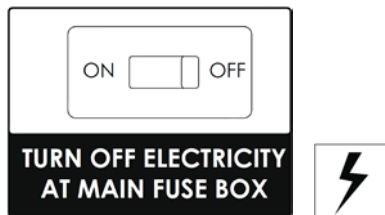
1. Configure design and layout of the system before attempting to install this product. Ensure that ambient temperature does not exceed 122° Fahrenheit. For dry location use only.

Product	Max Run Length
CVX-ST	30 feet
CVX-HO	20 feet

Note – For dimming applications refer to the spec sheet and the wiring diagrams below.

2. **Turn off electricity**

Before beginning installation, switch circuit breaker off or remove fuse.

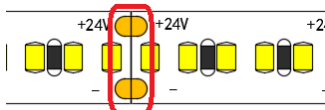


3. **Determine location to install components**

Refer to [WIRING DIAGRAMS](#)

4. **Prepare LED flexible tape for installation**

Cut the LED strip to desired lengths as required for your application. Only cut the LED strips along the designated cut line as shown. Cutting anywhere else will damage the LED light strip.



5. **Optional – Use connectors**

Slightly peel back the adhesive tape near the end to allow for proper insertion into the connector. Open the clamp of the connector and slide the tape under the metal contacts. Close the clamp fully (a click should be heard) to ensure proper connection.

CVX PCB

LED STRIP ENDS WITH SOLDER JOINT WILL NOT WORK WITH CONNECTOR



CVX-PC / CVX-PC-HW



CHECK POLARITY

CVX-2WR-CONN



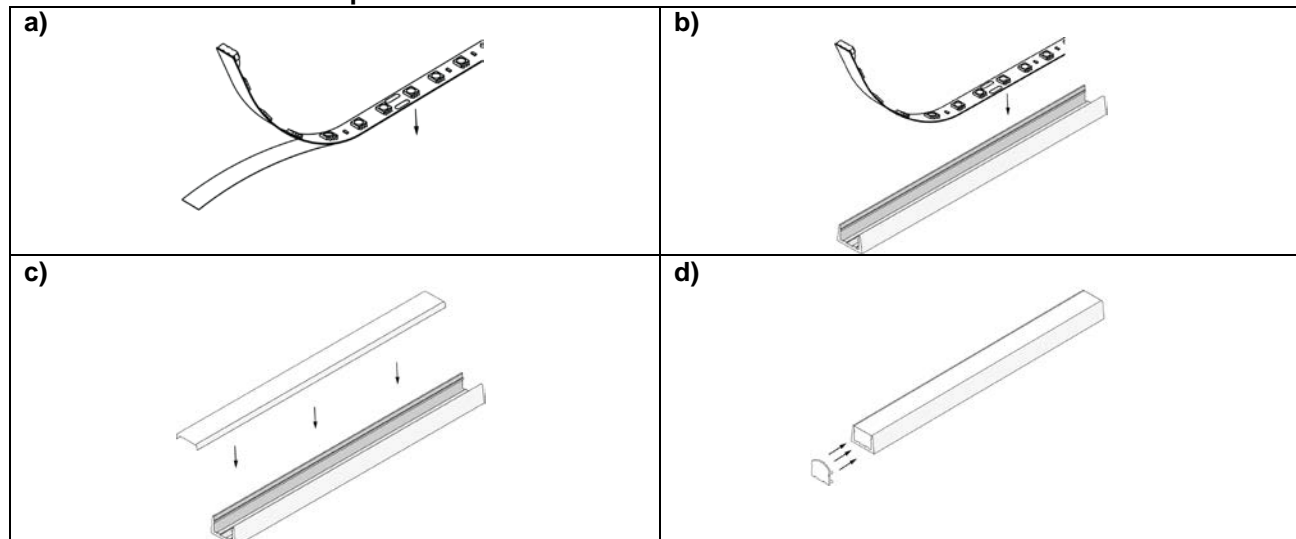
CHECK POLARITY

INSTALLATION INSTRUCTIONS

CVX-ST / CVX-HO



6. Mount the LED Flexible tape



- a)** Clean the mounting surface. Remove backing on the flexible tape to expose adhesive (ensure ambient temperature is minimum 50° F for proper adhesion). Carefully press the flexible tape to the mounting surface. Avoid pressing on the LEDs or any electrical component, avoid using excessive force and avoid pinching. When bending tighter than a 1" radius, do so only at the cut mark.
- b)** *Optional* – Install into Aluminum Channel (Channels are field-cuttable)
Install the mounting clips to the mounting surface (1 clip per 24 inches is recommended). Clean the channel surface. Remove backing on the flexible tape to expose adhesive. Carefully press the flexible tape into the aluminum channel. Avoid pressing on the LEDs or any electrical component, avoid using excessive force and avoid pinching. Insert the channel into the mounting clips.
- c)** *Optional* – Install Aluminum Channel Lens Cover
After inserting the flexible tape, align the channel cover with the aluminum channel. Carefully press the lens into the aluminum channel. The lens will snap into place. Do not use excessive force.
- d)** *Optional* – Insert Aluminum Channel End Caps for finished look. Live end cap for power feed end and dead end cap finishes for the other end.

NOTE: Lens might reduce lumen output, refer to channel specification sheet for details



7. Connect Power Supply

Using the power connector, connect to the power supply. If using a Hardwire power connector, connect the wires from the driver and the wires from the Hardwire power connector within a junction box. Ensure the wires are connected correctly by observing the polarity (positive to positive, negative to negative).

INSTALLATION INSTRUCTIONS

CVX-ST / CVX-HO



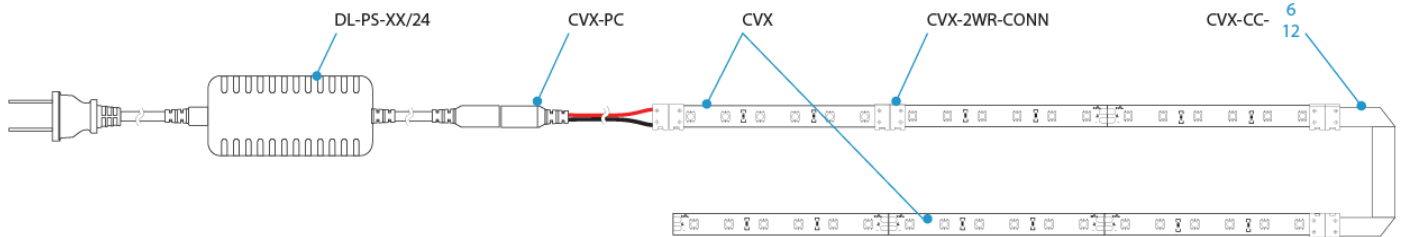
WIRING DIAGRAMS

NOTE: Vertical side-by-side mounting recommended for LED drivers

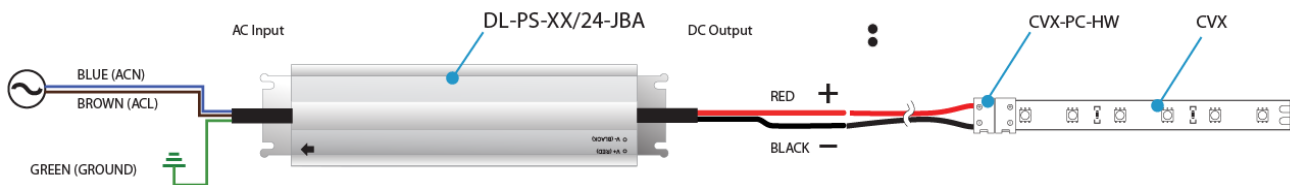
NOTE: Leave at least 1" spacing between LED drivers to allow for airflow to prevent heat buildup

NOTE: Refer to driver specification sheet for ambient temperature range of the driver

PLUG & PLAY



HARDWIRE



TRIAC Dimming For dimming see DL-PS-XX/24-JB-DIM or DL-PS-XX/24-HW-DIM series specification sheet (minimum 8W load is required)

