



MG1650

MODULAR – DOUBLE GIMBAL
LOW VOLTAGE NEW CONSTRUCTION
RECESSED FIXTURES

Type	
Project	
Catalog No.	



DESCRIPTION

This adjustable, single or multi-lamp recessed fixture is suitable for residential, retail, commercial, or hospitality general lighting applications. This design allows for use in ceilings of different thicknesses up to 2".

FEATURES

- Housing can be positioned anywhere along the hanger bars
- 3/4" overlap flanges, along with "pull-tight" torsions springs allows for minor cutting errors in the ceiling
- Self-resetting thermal protector ensures that fixture is deactivated in case of overheating.
- Double-gimbal construction ensures that lamps can be aimed at virtually any point below the ceiling.
- Butterfly hanger brackets allow for the fixture height to be easily adjusted to the correct height.
- Aiming - Inner Gimbal: ±40°, Outer Gimbal: ±45°
- 277V option available.
- Fits up to 2" ceiling depth

SPECIFICATIONS

HOUSING:

The housing is constructed out of a heavy gauge cold rolled steel and powder coated to ensure corrosion resistance,

JUNCTION BOX:

- Junction box is listed for thru branch circuit wiring (Max of 8 #12 AWG 90°C branch circuit conductors)
- A variety of different sized KOs provide for different wiring options.

MOUNTING:

Designed to be installed with overlap flange trim. Universal mounting brackets allow the use of conduit, HB or FB bar stock, or "C" channel bars. Consult factory for possible use in trimless "mud-in" installations. Non-IC means 3" clearance from any insulation on all sides must be maintained.

LAMPING:

Use Maximum 50W, 12V, GX5.3 base Halogen or LED MR16 Lamp (Lamps not included).

TRANSFORMER:

Electronic 12V / 75W (Min. load without dimmer = 10W, Min. load with dimmer = 20W).

CERTIFICATIONS:

cULus Listed for non-IC applications in damp locations.

ORDERING INFORMATION

MODEL	LAMP BASE / WATTAGE	# OF LAMPS	TRANSFORMER	FINISH
MG	1650	-	E	
	1650 – GX5.3 Base MR16 lamp / 50W max.	1 – 1 Light 2 – 2 Light 3 – 3 Light 4 – 4 Light 5L – 5 Light Corner*	E – Electronic	BB – Black Trim, Black, Black Interior WB – White Trim, Black Gimbal, Black Interior SB – Silver Trim, Black Gimbal, Black Interior

Example: **MG1650-2EWB**

*While supplies last

FIXTURE CONFIGURATIONS



www.jescolighting.com
support@jescolighting.com
Tech Support: 855.592.0029

15 Harbor Park Drive
Port Washington, NY 11050
Main Line: 800.527.7796
Fax Line: 855.265.5768

219 South 6th Ave
City of Industry, CA 91746
Main Line: 855.654.0110
Fax Line: 626.333.2955

3/10/2016

Specifications subject to change without notice.

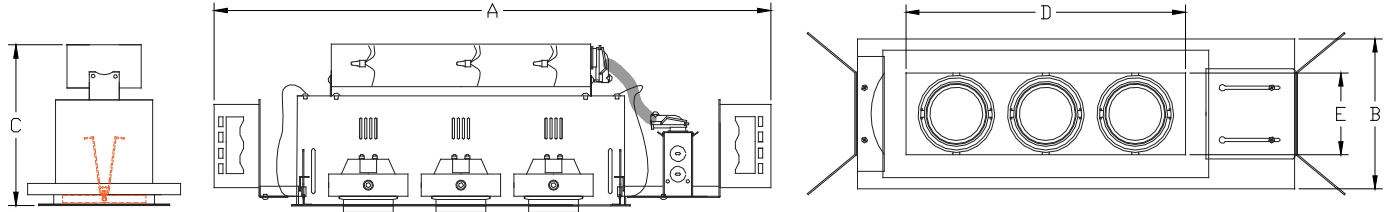


MG1650

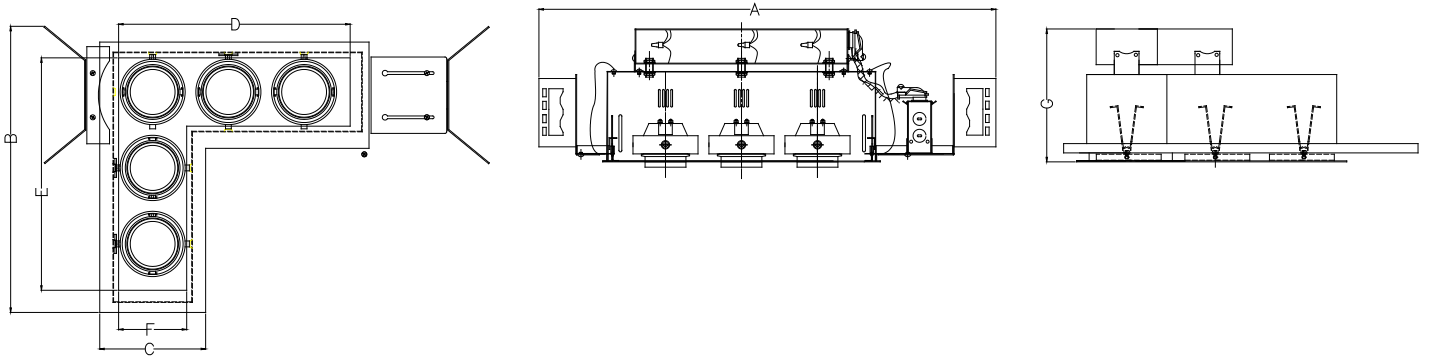
MODULAR – DOUBLE GIMBAL
 LOW VOLTAGE NEW CONSTRUCTION
 RECESSED FIXTURES

Type	
Project	
Catalog No.	

FIXTURE DIMENSIONS



MODEL	HOUSING			APERTURE		CUT-OUT	
	A	B	C	D	E		
MG 1650-1E	16"	6 1/2"	6 7/8"	4-1/2"	3-1/2"	6 1/4"	4 1/2"
MG 1650-2E	19 7/8"	6 1/2"	6 7/8"	8 1/2"	3-1/2"	10 1/4"	4 1/2"
MG 1650-3E	23 7/8"	6 1/2"	6 7/8"	12 3/8"	3-1/2"	14 1/4"	4 1/2"
MG 1650-4E	27 3/4"	6 1/2"	6 7/8"	16 3/8"	3-1/2"	18 1/4"	4 1/2"



MODEL	HOUSING			APERTURE	CUT-OUT
	A	B	C	D x E x F	
MG 1650-5LE	23 3/4"	14 7/8"	5 1/2"	12 1/8" x 12 1/8" x 3-1/2"	13 1/8" x 13 1/8" x 4 1/4"

TRIMLESS INSERTS:



COMPATIBILITY		DIMENSIONS			CUT-OUT	
FIXTURE MODEL	TRIMLESS INSERT MODEL	L	W	H	L	W
MG1650-1E	MG16TL1	9-1/2"	7-1/2"	3/8"	6-1/2"	4-1/2"
MG1650-2E	MG16TL2	13-3/8"	7-1/2"	3/8"	10-3/8"	4-1/2"
MG1650-3E	MG16TL3	17-3/8"	7-1/2"	3/8"	14-3/8"	4-1/2"
MG1650-4E	MG16TL4	21-3/8"	7-1/2"	3/8"	18-3/8"	4-1/2"



www.jescolighting.com
 support@jescolighting.com
 Tech Support: 855.592.0029

15 Harbor Park Drive
 Port Washington, NY 11050
 Main Line: 800.527.7796
 Fax Line: 855.265.5768

219 South 6th Ave
 City of Industry, CA 91746
 Main Line: 855.654.0110
 Fax Line: 626.333.2955

3/10/2016

Specifications subject to change without notice.



MG1650

MODULINEAR – DOUBLE GIMBAL
LOW VOLTAGE NEW CONSTRUCTION
RECESSED FIXTURES

Type	
Project	
Catalog No.	

ACCESSORIES



DICHOIC LENS
LENS-16-DI-RD (Red)
LENS-16-DI-BU (Blue)
LENS-16-DI-YW (Yellow)
LENS-16-DI-GN (Green)



COLORED LENS
LENS-16-RD (Red)
LENS-16-BU (Blue)
LENS-16-YW (Yellow)
LENS-16-GN (Green)



PRISMATIC DIFFUSER
LENS-16-PRIS



SOFTENING DIFFUSER
LENS-16-SOFT



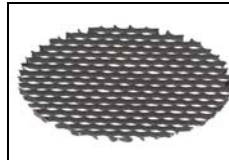
UV FILTER
LENS-16-UV



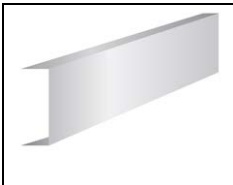
FROSTED DIFFUSER
LENS-16-FROS



LINEAR DIFFUSER
LENS-16-LINR



HONEYCOMB LOUVER
LENS-16-HCOM



C-CHANNEL HANGER BARS
RSCHB (SET OF TWO)



LL-MR16-7W-38-2780
LL-MR16-7W-38-3080
LL-MR16-7W-38-4080
Watt: 7W (65W equivalent)
Lumen: 550 Lm