

Jeremiah Lighting

28653-ABZ

Please read carefully and save these instructions, as you may need them at a later date.

CAUTION

Turn off the main power at the circuit breaker before installing the fixture in order to prevent possible shock.

All electrical connections must be in accordance with local and National Electrical Code (N.E.C.) standards. If you are unfamiliar with proper electrical wiring connections, obtain the services of a qualified electrician.

GENERAL

Remove all parts and hardware from the box and make sure that none are missing by referencing the illustrations provided.

ASSEMBLY AND INSTALLATION

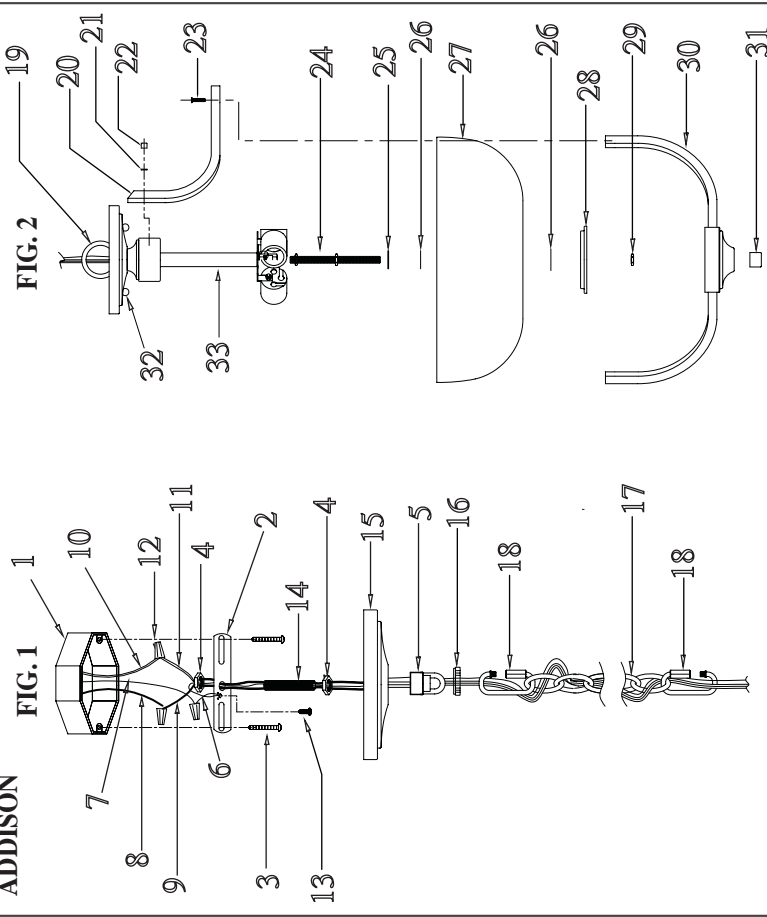
1. Pull the SUPPLY WIRES (8 & 10) and the SUPPLY GROUND WIRE (7) out from the OUTLET BOX (1) (not included) and attach the MOUNTING STRAP (2) assembly to the OUTLET BOX (1) using the slotted holes of the MOUNTING STRAP (2) and the OUTLET BOX SCREWS and WASHERS (3). [See Fig. 1]
2. Remove the THREADED RING (16) from the SCREW COLLAR LOOP (5) and set aside. Place the CANOPY (15) over the OUTLET BOX (1) and adjust the SCREW COLLAR LOOP (5) and THREADED ROD (14) until the midpoint of the outside threads on the SCREW COLLAR LOOP (5) is centered (aligned) with the surface of the CANOPY (15). Remove the CANOPY (15) and tighten both 1/8" IPS HEX NUTS (4) down on the MOUNTING STRAP (2) and the SCREW COLLAR LOOP (5). [See Fig. 1]
3. Unravel the FIXTURE LEAD WIRES (9 & 11) and FIXTURE GROUND WIRE (6). Slide the FIXTURE LOOP (19) down the fixture wires and then thread onto the threaded rod at the top of the FIXTURE ((33) until tight. [See Fig. 2]
4. Attach one CONNECTING CHAIN LINK (18) to each end of the CHAIN (17). Then attach one end of the CHAIN (17) to the FIXTURE LOOP (19). Close the ends of the CONNECTING CHAIN LINKS (18). Thread the FIXTURE LEAD WIRES (9 & 11) through every other link of the CHAIN (17) starting with the chain link attached to the FIXTURE LOOP (19). Slide the THREADED RING (16) and the CANOPY (15) (in that order) onto the CHAIN (17) and FIXTURE WIRES (6, 9, 11). [See Fig. 1 & 2]
5. Feed the FIXTURE LEAD WIRES (9 & 11) and FIXTURE GROUND WIRE (6) through the SCREW COLLAR LOOP (5) and threaded rod assembly. Pull the FIXTURE LEAD WIRE (9 & 11) and the FIXTURE GROUND WIRE (6) upward to remove any excess slack. [See Fig. 1]
6. Attach the power supply wires to the fixture lead wires by connecting the BLACK SUPPLY WIRE (8) to the SMOOTH FIXTURE LEAD WIRE (9) and the WHITE SUPPLY WIRE (10) to the RIBBED FIXTURE LEAD WIRE (11). Loop the SUPPLY GROUND WIRE (7) around the GROUND SCREW (13) of the MOUNTING STRAP (2). [Note: Be sure to provide an extra 3in. length of the SUPPLY GROUND WIRE (7) for connection to the FIXTURE GROUND WIRE (6).] Connect the remaining SUPPLY GROUND WIRE (7) to the FIXTURE GROUND WIRE (6). Use a WIRE CONNECTOR (12) for all wire connections. Push wiring and connections inside the OUTLET BOX (1). [See Fig. 1]
7. Place the CANOPY (15) over the OUTLET BOX (1) and secure it by screwing the THREADED RING (16) onto the SCREW COLLAR LOOP (5). Open CONNECTING CHAIN LINK (18) at top of CHAIN (17) to attach CHAIN (17) to SCREW COLLAR LOOP (5). Close CONNECTING CHAIN LINK (18). [See Fig. 1]
8. Attach ARMS (20) to FIXTURE (33) using DECORATIVE SCREWS (22) along with SMALL RUBBER WASHERS (21). [Fig. 2] DECORATIVE NUTS (32) and screws from mounting plate may be used to cover holes in FIXTURE (33). [See Fig. 2]

ASSEMBLY AND INSTALLATION (Continued)

9. Install bulbs, **MAXIMUM 60W** each.
10. Attach THREADED ROD (24) to the bottom of the FIXTURE (33) and secure with one of the HEX NUTS (24). Slide the FLAT WASHER (25), one LARGE RUBBER WASHER (26), GLASS SHADE (27), other LARGE RUBBER WASHER (26) and FINIAL PLATE (28) over THREADED ROD (24) and secure with HEX NUT (28). Lower and tighten the other HEX NUT (24) against the FLAT WASHER (25). Attach GLASS SUPPORT (30) with the FINIAL (31). [See Fig. 2]
11. Secure ARMS (19) to the GLASS SUPPORT (29) using the GLASS SUPPORT SCREWS (22).

INSTALLATION IS NOW COMPLETE

ADDISON



3-LIGHT CONVERTIBLE (PENDANT)

- | | | |
|---|-------------------------------|--------------------|
| 1. OUTLET BOX (NOT INCLUDED) | 14. THREADED ROD | 27. GLASS SHADE |
| 2. MOUNTING STRAP | 15. CANOPY | 28. FINIAL PLATE |
| 3. OUTLET BOX SCREW and WASHER (pre-attached to outlet box) | 16. THREADED RING | 29. HEX NUT |
| 4. HEX NUT | 17. CHAIN | 30. GLASS SUPPORT |
| 5. SCREW COLLAR LOOP (pre-attached) | 18. CONNECTING CHAIN LINK | 31. FINIAL |
| 6. FIXTURE GROUND WIRE | 19. FIXTURE LOOP | 32. DECORATIVE NUT |
| 7. SUPPLY GROUND WIRE (not included) | 20. ARM | 33. FIXTURE |
| 8. BLACK SUPPLY WIRE (not included) | 21. SMALL RUBBER WASHER | |
| 9. SMOOTH FIXTURE LEAD WIRE | 22. DECORATIVE SCREW | |
| 10. WHITE SUPPLY WIRE (not included) | 23. GLASS SUPPORT | |
| 11. RIBBED FIXTURE LEAD WIRE | 24. THREADED ROD and HEX NUTS | |
| 12. WIRE CONNECTOR | 25. FLAT WASHER | |
| 13. GROUND SCREW (pre-attached) | 26. LARGE RUBBER WASHER | |

Jeremiah Lighting

28653-ABZ

Please read carefully and save these instructions, as you may need them at a later date.

CAUTION

Turn off the main power at the circuit breaker before installing the fixture in order to prevent possible shock.

All electrical connections must be in accordance with local and National Electrical Code (N.E.C.) standards. If you are unfamiliar with proper electrical wiring connections, obtain the services of a qualified electrician.

GENERAL

Remove all parts and hardware from the box and make sure that no parts are missing by referencing the illustrations provided.

ASSEMBLY AND INSTALLATION

1. Pull the SUPPLY WIRES (8 & 10) and the SUPPLY GROUND WIRE (7) out from the OUTLET BOX (1) (not included) and attach the MOUNTING PLATE (2) assembly to the OUTLET BOX (1) using the slotted holes of the MOUNTING PLATE (2) and the OUTLET BOX SCREWS and WASHERS (3).
2. Place the CANOPY (15) over the OUTLET BOX (1) to determine the amount of adjustment necessary; the FIXTURE SCREWS (4) should come through holes in CANOPY (15) just enough so that DECORATIVE NUTS (32) fit flush when FIXTURE (33) is mounted. Remove the CANOPY (15) and tighten both 1/8" IPS HEX NUTS (4) down on the MOUNTING PLATE (2). [See Fig. 1]
3. Attach the power supply wires to the fixture lead wires by connecting the BLACK SUPPLY WIRE (8) to the SMOOTH FIXTURE LEAD WIRE (9) and the WHITE SUPPLY WIRE (10) to the RIBBED FIXTURE LEAD WIRE (11). Loop the SUPPLY GROUND WIRE (7) around the GROUND SCREW (13) of the MOUNTING STRAP (2). [Note: Be sure to provide an extra 3in. length of the SUPPLY GROUND WIRE (7) for connections to the FIXTURE GROUND WIRE (6).] Connect the remaining SUPPLY GROUND WIRE (7) to the FIXTURE GROUND WIRE (6). Use a WIRE CONNECTOR (15) for all wire connections. Push wiring and connections inside the OUTLET BOX (1). [See Fig. 1]
4. Place CANOPY (14) onto the FIXTURE SCREWS (4) and secure it with the DECORATIVE NUTS (31) provided.

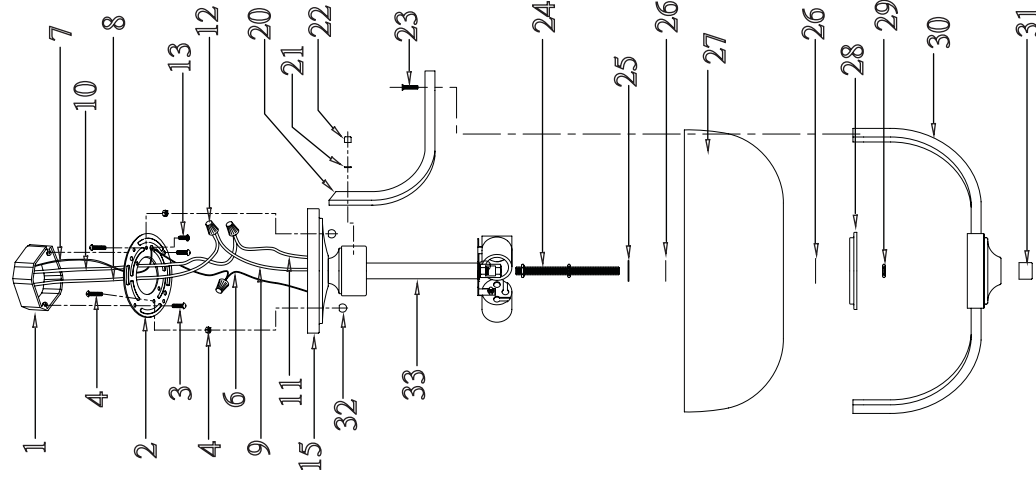
5. Attach ARMS (19) to FIXTURE (33) using DECORATIVE SCREWS (22) along with SMALL RUBBER WASHERS (21). [See Fig. 1]

6. Install bulbs, **MAXIMUM 60W** each.

7. Attach THREADED ROD (24) to the bottom of the FIXTURE (33) and secure with HEX NUT (24). Slide the FLAT WASHER (25), one LARGE RUBBER WASHER (26), GLASS SHADE (27), other LARGE RUBBER WASHER (26) and FINIAL PLATE (28) over THREADED ROD (24) and secure with HEX NUT (28). Attach GLASS SUPPORT (30) with the FINIAL (31). [See Fig. 2]

8. Secure ARMS (19) to the GLASS SUPPORT (29) using the GLASS SUPPORT SCREWS (22).

INSTALLATION IS NOW COMPLETE



3-LIGHT CONVERTIBLE (SEMI-FLUSH)

- | | |
|--|-------------------------------|
| 1. OUTLET BOX (NOT INCLUDED) | 20. ARM |
| 2. MOUNTING PLATE | 21. SMALL RUBBER WASHER |
| 3. OUTLET BOX SCREW and WASHER
(pre-attached to outlet box) | 22. DECORATIVE SCREW |
| 4. FIXTURE SCREWS and HEX NUTS (pre-attached) | 23. GLASS SUPPORT SCREW |
| 5. FIXTURE GROUND WIRE | 24. THREADED ROD and HEX NUTS |
| 6. SUPPLY GROUND WIRE (not included) | 25. FLAT WASHER |
| 7. BLACK SUPPLY WIRE (not included) | 26. LARGE RUBBER WASHER |
| 8. SMOOTH FIXTURE LEAD WIRE | 27. GLASS SHADE |
| 9. WHITE SUPPLY WIRE (not included) | 28. FINIAL PLATE |
| 10. RIBBED FIXTURE LEAD WIRE | 29. HEX NUT |
| 11. WIRE CONNECTOR | 30. GLASS SUPPORT |
| 12. GROUND SCREW (pre-attached) | 31. FINIAL |
| 13. CANOPY | 32. DECORATIVE NUT |
| | 33. FIXTURE |