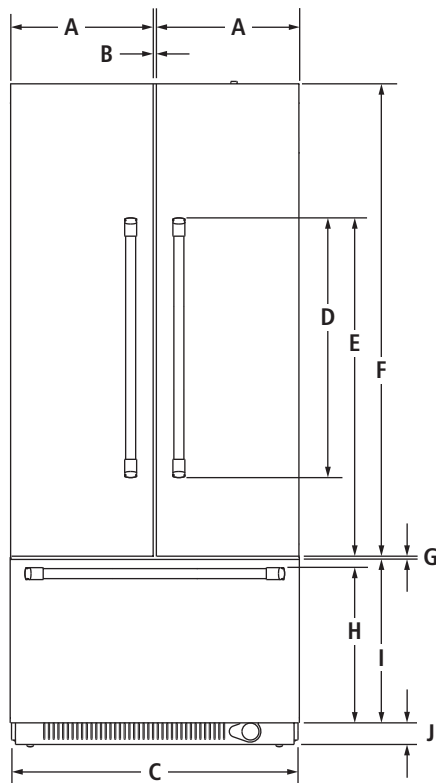


## 36" FULLY INTEGRATED FRENCH DOOR REFRIGERATOR

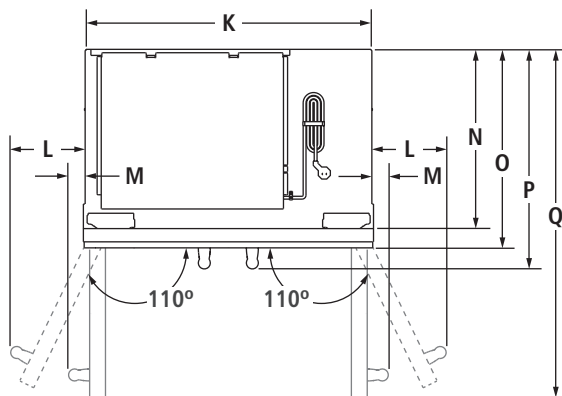
(BASE UNIT REQUIRES SUITE-COORDINATING FULL HEIGHT PANEL KIT OR CUSTOM PANELS AND HANDLES)

JF36NFXDE – 35¾" x 82⅞" x 24" (without door/handles)

## PRODUCT DIMENSIONS



FRONT VIEW



TOP VIEW

MODEL #		JF36NFXDE	
		in	cm
<b>A</b>	Width of each door	17 <sup>13</sup> / <sub>16</sub>	45.2
<b>B</b>	Space between doors	1/8	0.3
<b>C</b>	Overall width	35 <sup>3</sup> / <sub>4</sub>	90.8
<b>D</b>	Height of door handles Pro-Style® Stainless	32 <sup>3</sup> / <sub>8</sub>	82.2
	Euro-Style Stainless	37 <sup>7</sup> / <sub>8</sub>	96.0
<b>E</b>	Height to top of door handles Pro-Style® Stainless	42 <sup>3</sup> / <sub>8</sub>	107.6
	Euro-Style Stainless	44 <sup>7</sup> / <sub>8</sub>	114.0
<b>F</b>	Height of doors	59 <sup>1</sup> / <sub>8</sub>	150.2
<b>G</b>	Space between doors and drawer	1/8	0.3
<b>H</b>	Height to top of drawer handle Pro-Style® Stainless	19 <sup>3</sup> / <sub>8</sub>	49.2
	Euro-Style Stainless	19 <sup>1</sup> / <sub>4</sub>	48.7
<b>I</b>	Height of drawer	20 <sup>1</sup> / <sub>2</sub>	52.1
<b>J</b>	Height of bottom grille	3	7.6
<b>K</b>	Width of recessed refrigerator	35	88.9
<b>L</b>	Width from side of refrigerator to handle – door fully open 110° Pro-Style® Stainless	7	17.8
	Euro-Style Stainless	6 <sup>1</sup> / <sub>2</sub>	16.5
<b>M</b>	Width from side of refrigerator to handle – door open 90° Pro-Style® Stainless	2	5.1
	Euro-Style Stainless	1 <sup>1</sup> / <sub>2</sub>	3.9
<b>N</b>	Depth without door panel kit	24	61.0
<b>O</b>	Depth with doors Pro-Style® Stainless panel kit	24 <sup>3</sup> / <sub>4</sub>	62.9
	Euro-Style Stainless panel kit	24 <sup>3</sup> / <sub>4</sub>	62.9
	Custom panel (¾"/1.9 cm)	24 <sup>3</sup> / <sub>4</sub>	62.9
<b>P</b>	Depth with handles Pro-Style® Stainless	27 <sup>3</sup> / <sub>8</sub>	69.5
	Euro-Style Stainless	26 <sup>7</sup> / <sub>8</sub>	68.3
<b>Q</b>	Depth with doors open 90°	41	104.1

**IMPORTANT:** Dimensional specifications are provided for planning purposes only.

Do not make any cutouts based on this information. Refer to the Installation or Use &amp; Care Guide before selecting cabinetry, verifying electrical/gas connections, making cutouts or beginning installation.

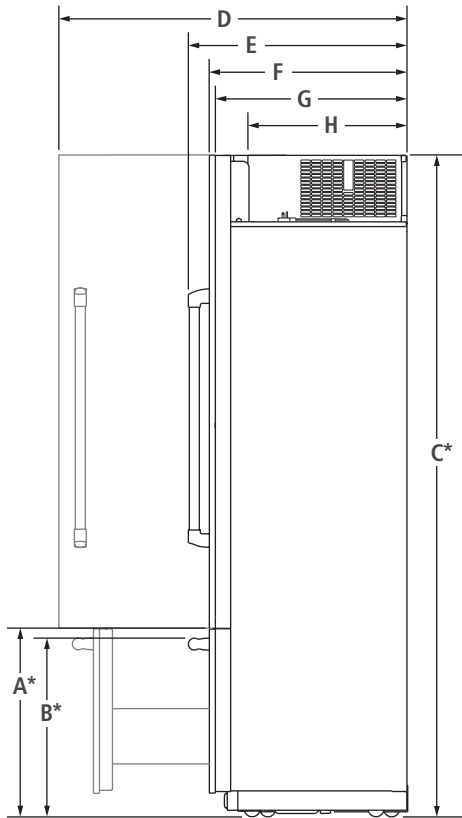
All Jenn-Air® appliances are appropriately UL, CUL or CSA approved.

## 36" FULLY INTEGRATED FRENCH DOOR REFRIGERATOR

(BASE UNIT REQUIRES SUITE-COORDINATING FULL HEIGHT PANEL KIT OR CUSTOM PANELS AND HANDLES)

**JF36NXFXDE – 35<sup>3</sup>/<sub>4</sub>" x 82<sup>7</sup>/<sub>8</sub>" x 24" (without door/handles)**

## DIMENSIONS AS INSTALLED



SIDE VIEW

MODEL #		JF36NXFXDE	
		in	cm
<b>A*</b>	Height to top of drawer (min.)	23 <sup>1</sup> / <sub>2</sub>	59.7
	Height to top of drawer handle (min.)		
<b>B*</b>	Pro-Style® Stainless	22 <sup>3</sup> / <sub>8</sub>	56.8
	Euro-Style Stainless	22 <sup>1</sup> / <sub>4</sub>	56.3
<b>C*</b>	Height to top of doors (min.)	82 <sup>7</sup> / <sub>8</sub>	210.5
<b>D</b>	Depth with door open 90° (min.)	41	104.1
<b>E</b>	Depth with handles (min.)		
	Pro-Style® Stainless	27 <sup>3</sup> / <sub>8</sub>	69.5
	Euro-Style Stainless	26 <sup>7</sup> / <sub>8</sub>	68.3
<b>F</b>	Depth with doors (min.)		
	Pro-Style® Stainless panel kit	24 <sup>3</sup> / <sub>4</sub>	62.9
	Euro-Style Stainless panel kit	24 <sup>3</sup> / <sub>4</sub>	62.9
	Custom panel (¾"/1.9 cm)	24 <sup>3</sup> / <sub>4</sub>	62.9
<b>G</b>	Depth without door panel kit (min.)	24	61.0
<b>H</b>	Depth of compressor (min.)	19 <sup>7</sup> / <sub>8</sub>	50.5

\*Add 1<sup>1</sup>/<sub>4</sub>" (3.2 cm) to the height dimension when leveling legs are fully extended.**IMPORTANT:** Dimensional specifications are provided for planning purposes only.**Do not make any cutouts based on this information.** Refer to the Installation or Use & Care Guide before selecting cabinetry, verifying electrical/gas connections, making cutouts or beginning installation.

All Jenn-Air® appliances are appropriately UL, CUL or CSA approved.

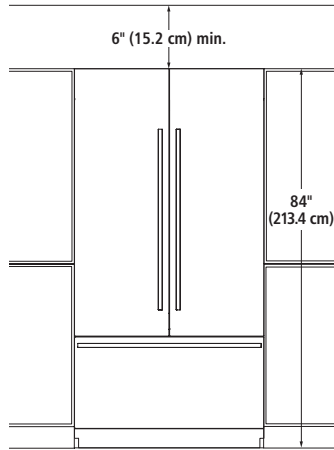
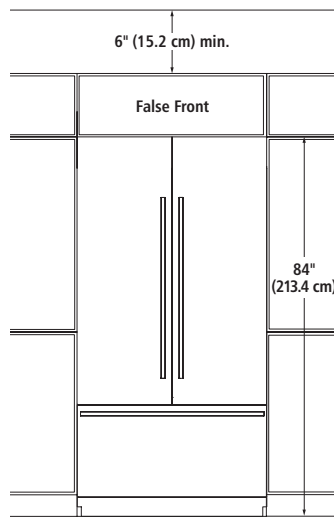
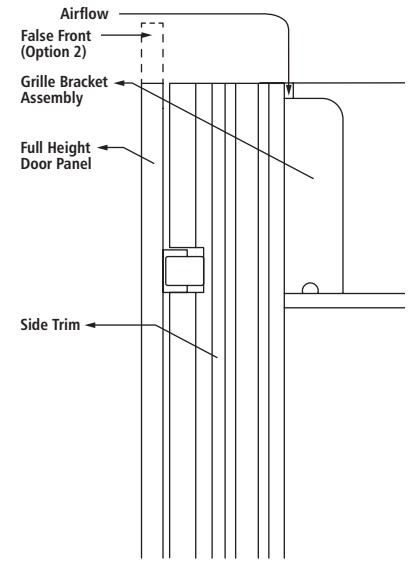
## 36" FULLY INTEGRATED FRENCH DOOR REFRIGERATOR

(BASE UNIT REQUIRES SUITE-COORDINATING FULL HEIGHT PANEL KIT OR CUSTOM PANELS AND HANDLES)

JF36NXFXDE – 35 $\frac{3}{4}$ " x 82 $\frac{7}{8}$ " x 24" (without door/handles)

## DOOR PANEL INSTALLATION

## ARMOIRE-STYLE INSTALLATION\*

FRONT VIEW – OPEN TO CEILING  
(OPTION 1)FRONT VIEW – FALSE FRONT  
(OPTION 2)

SIDE VIEW – CUSTOM PANEL

- Attach the grille bracket assembly and grille panel provided in the armoire-style panel kit
- Requires a minimum of 6" (15.2 cm) of open space above the refrigerator, which must not be blocked in any way, including soffits

\* Refer to the Armoire Kit installation instructions for additional dimensions and installation details.

**IMPORTANT:** Dimensional specifications are provided for planning purposes only.

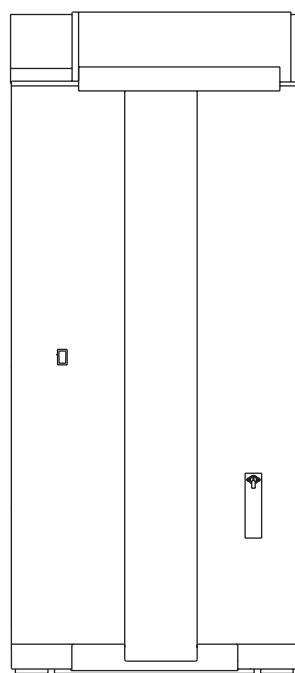
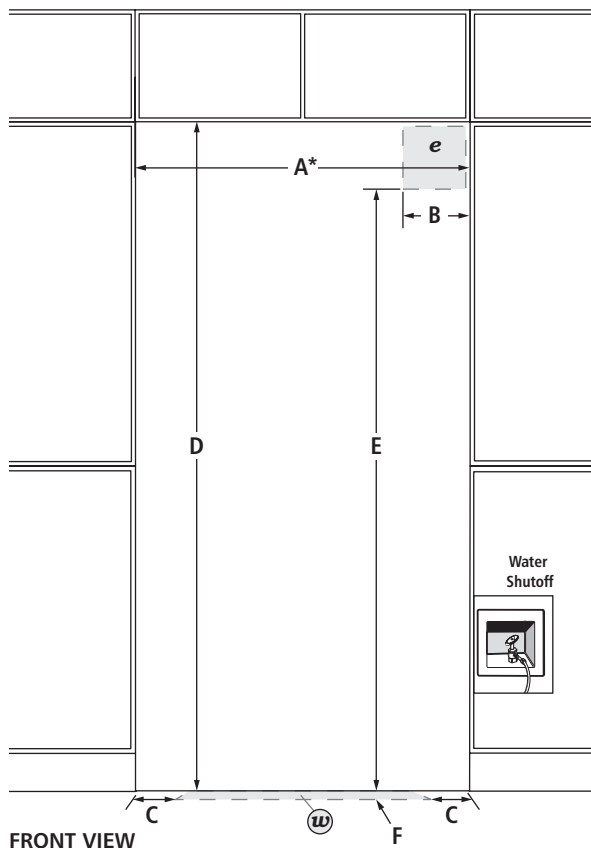
**Do not make any cutouts based on this information.** Refer to the Installation or Use & Care Guide before selecting cabinetry, verifying electrical/gas connections, making cutouts or beginning installation. All Jenn-Air® appliances are appropriately UL, CUL or CSA approved.

## 36" FULLY INTEGRATED FRENCH DOOR REFRIGERATOR

(BASE UNIT REQUIRES SUITE-COORDINATING FULL HEIGHT PANEL KIT OR CUSTOM PANELS AND HANDLES)

JF36NXFXDE – 35<sup>3</sup>/<sub>4</sub>" x 82<sup>7</sup>/<sub>8</sub>" x 24" (without door/handles)

## OPENING/CLEARANCE DIMENSIONS



MODEL #		JF36NXFXDE	
		in	cm
<b>A*</b>	Width (min.)	36	91.4
<b>B</b>	Width of recommended electrical location	4	10.2
<b>C</b>	Distance from side of cabinet to recommended water connection location	6	15.2
<b>D</b>	Height (min.)	84	213.4
<b>E</b>	Height to recommended electrical location	77	195.6
<b>F</b>	Depth of recommended water connection location (max.)	1	2.5
<b>e</b>	Recommended electrical connection location		
<b>w</b>	Recommended water connection location		

\*A minimum 2" (5.1 cm) furniture return must extend behind the face of the cabinet on all sides.

## ELECTRICAL REQUIREMENTS

115 volt, 60 Hz, AC only, 15- or 20-amp fused, grounded circuit is required. A dedicated circuit is recommended. Use an outlet that cannot be turned off by a switch. Do not use an extension cord.

## WATER PRESSURE REQUIREMENTS

A cold water supply with water pressure between 30 and 120 psi (207 and 827 kPa) is required to operate the ice maker. Call a licensed, qualified plumber with any questions about the water pressure.

## Reverse Osmosis Water Supply

**IMPORTANT:** The pressure of the water coming out of a reverse osmosis system going to the water inlet valve of the refrigerator needs to be between 30 and 120 psi (207 and 827 kPa).

If a reverse osmosis water filtration system is connected to the cold water supply, the water pressure to the reverse osmosis system needs to be a minimum of 40 to 60 psi (276 to 414 kPa).

## LOCATION REQUIREMENTS

Floor must be able to support refrigerator (more than 600 lb [272 kg]), door panels and contents of the refrigerator and must be at the same level as flooring in the room.

**IMPORTANT:** Dimensional specifications are provided for planning purposes only.

**Do not make any cutouts based on this information.** Refer to the Installation or Use & Care Guide before selecting cabinetry, verifying electrical/gas connections, making cutouts or beginning installation.

All Jenn-Air® appliances are appropriately UL, CUL or CSA approved.