


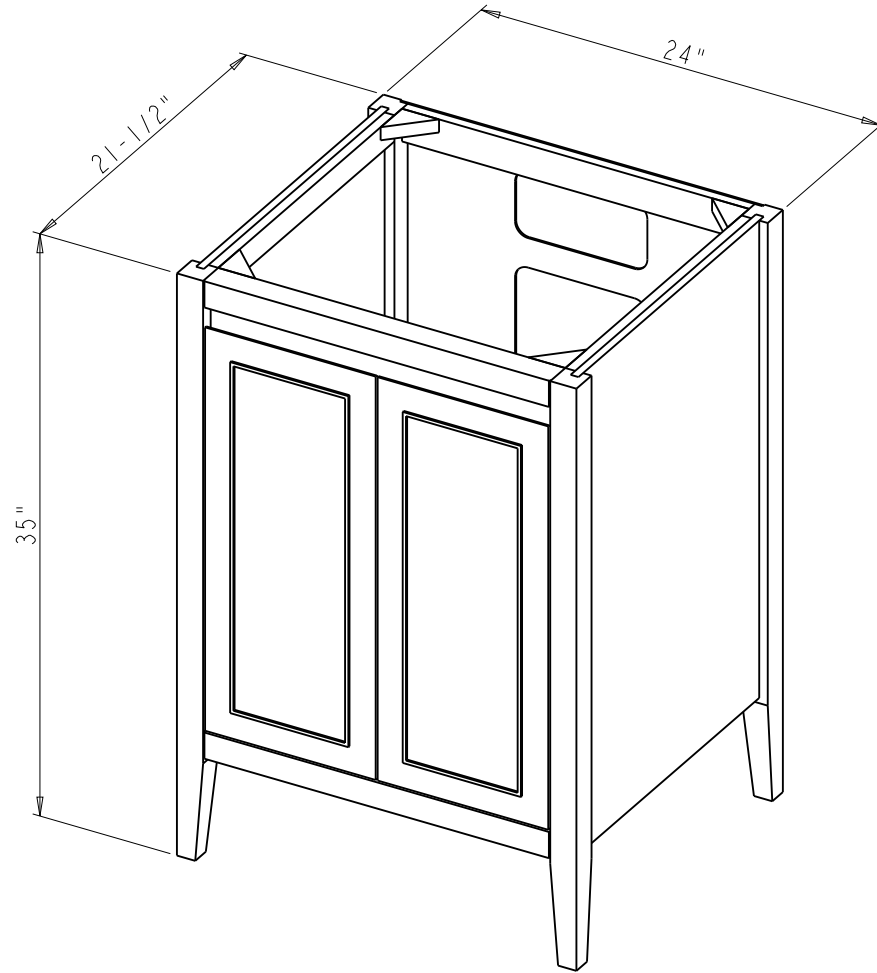
ADJUSTABLE-SHELF


Specification:

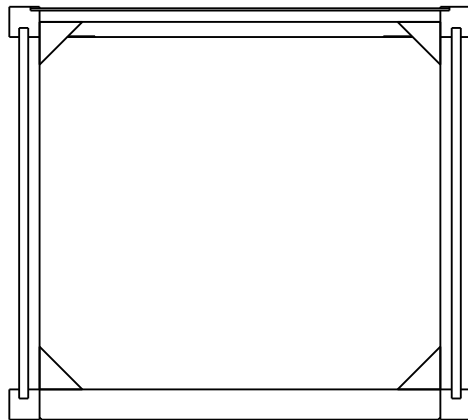
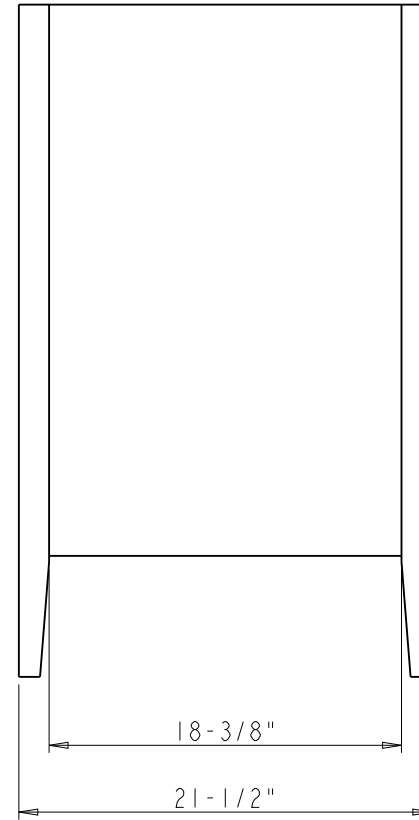
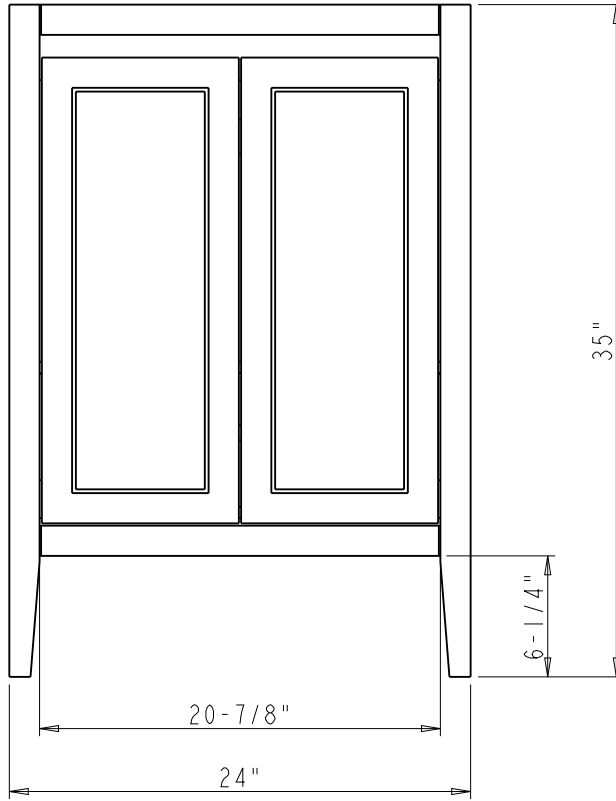
1. Material: MDF + Plywood + Birch
2. Finish & Inset: See Table
3. Slides: USE58-300-18 + USCLIP2ND-4W( 1 Set )
4. Hinge: 700.0537.25 + 600.1234.05 ( 4 Set )
- 5 Shelf Supports: 1707BN ( 4 PCS )
6. The tolerance is +/- 1/8"


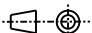
Item number	Finish	Inset
VN2PER-24-BK-NT	Black	PC
VN2PER-24-BL-NT	Blue	SBZ
VN2PER-24-WH-NT	White	SBZ
VN2PER-24-GR-NT	Grey	MB

 <p><b>PROPRIETARY AND CONFIDENTIAL</b></p> <p>THE INFORMATION CONTAINED IN THIS DRAWING IS THE SOLE PROPERTY OF HARDWARE RESOURCES INC. ANY REPRODUCTION IN PART OR AS A WHOLE WITHOUT THE WRITTEN PERMISSION OF HARDWARE RESOURCES INC. IS PROHIBITED.</p> <p>DO NOT SCALE DRAWING</p>	ITEM#: VN2PER-24	MATERIAL:	
	FINISH:	WEIGHT: 9	
	TOLERANCE UNLESS OTHERWISE SPECIFIED: X ±0.20 X.X ±0.10 X.XX ±0.05 ANGULAR: ±0.5°	UNITS: DRAWN BY: <b>Tony.Huang</b>	DATE: Nov-22-21
	SIZE: SHEET:	APPROVED BY: RELEASE LEVEL:	DATE: REVISION:



 <b>PROPRIETARY AND CONFIDENTIAL</b> THE INFORMATION CONTAINED IN THIS DRAWING IS THE SOLE PROPERTY OF HARDWARE RESOURCES INC. ANY REPRODUCTION IN PART OR AS A WHOLE WITHOUT THE WRITTEN PERMISSION OF HARDWARE RESOURCES INC. IS PROHIBITED.	ITEM#: VN2PER-24		MATERIAL:		
	FINISH:		WEIGHT: 9		
	TOLERANCE UNLESS OTHERWISE SPECIFIED: X ±0.20 X.X ±0.10 X.XX ±0.05 ANGULAR: ±0.5°		UNITS:	DRAWN BY: <i>Hugo.cai</i>	DATE: Apr-29-21
	DO NOT SCALE DRAWING		SIZE:	APPROVED BY:	DATE:
		SHEET:	RELEASE LEVEL:	REVISION:	



 <p><b>PROPRIETARY AND CONFIDENTIAL</b></p> <p>THE INFORMATION CONTAINED IN THIS DRAWING IS THE SOLE PROPERTY OF HARDWARE RESOURCES INC. ANY REPRODUCTION IN PART OR AS A WHOLE WITHOUT THE WRITTEN PERMISSION OF HARDWARE RESOURCES INC. IS PROHIBITED.</p> <p>DO NOT SCALE DRAWING</p>	ITEM:	VN2PER-24		MATERIAL:	
	FINISH:			WEIGHT:	
				PROJECTION	9
					
TOLERANCE UNLESS OTHERWISE SPECIFIED:		UNITS:	DRAWN BY:		DATE:
X ±0.20			Hugo.cai		Apr-29-21
X.X ±0.10		SIZE:	APPROVED BY:		DATE:
X.XX ±0.05					
ANGULAR: ±0.5°		SHEET:	RELEASE LEVEL:		REVISION: