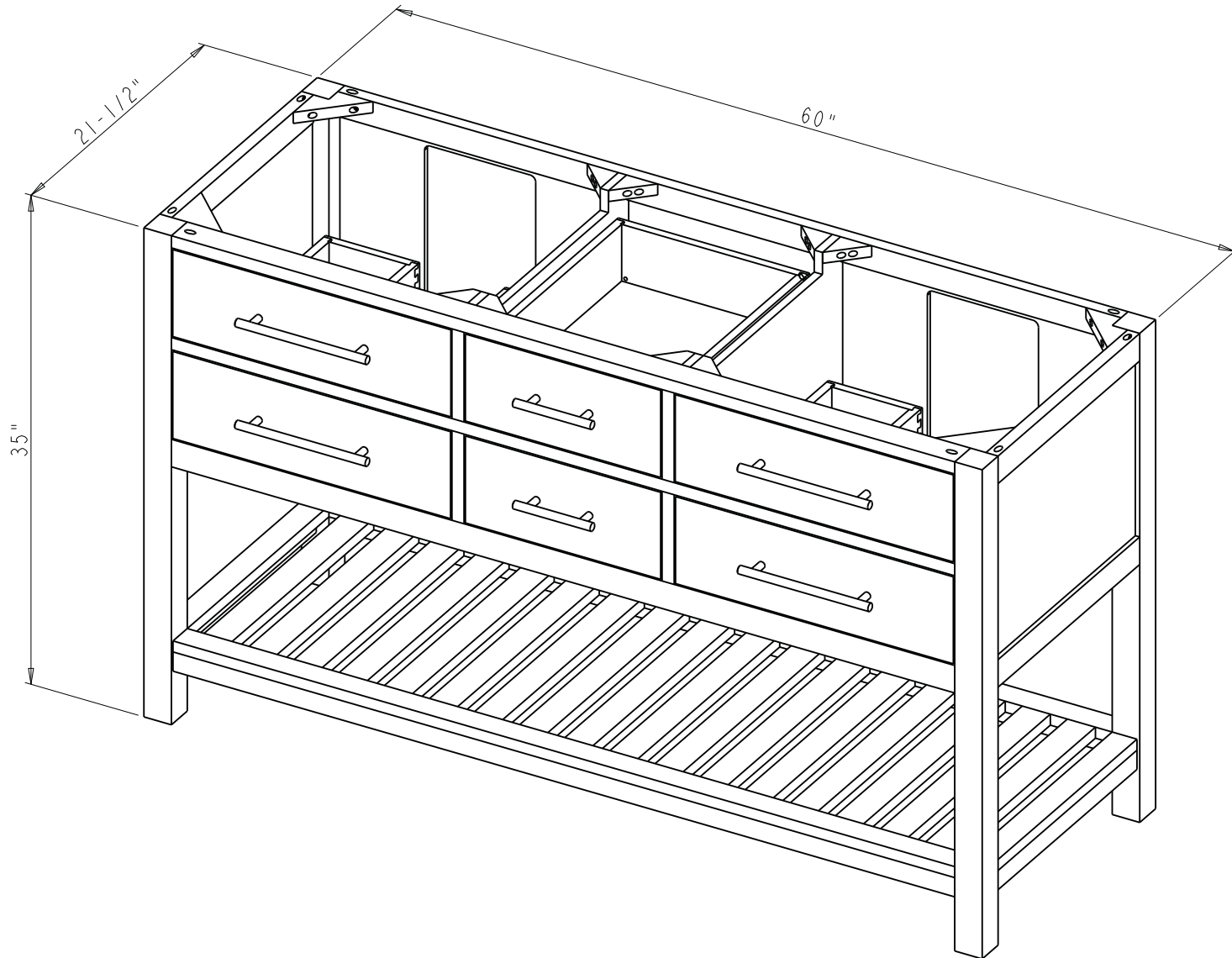



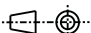
Specification:

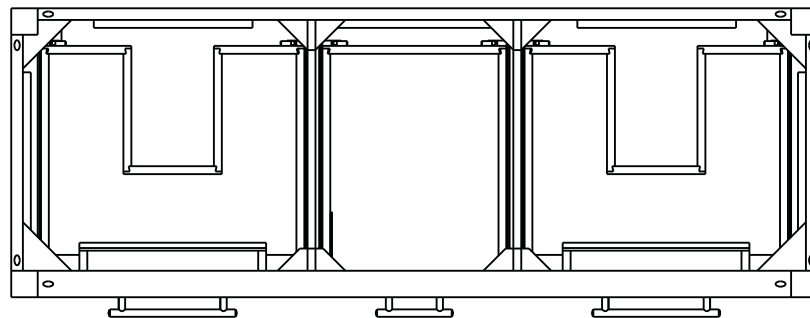
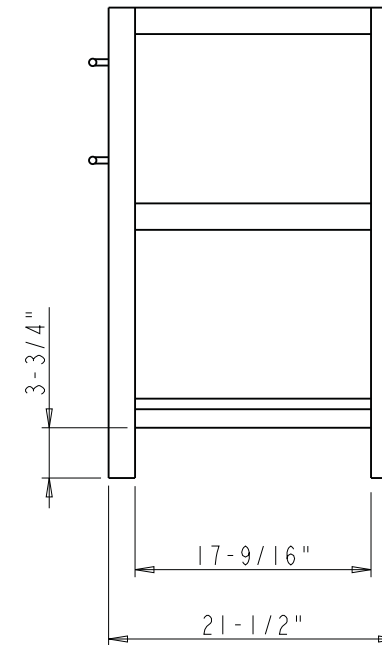
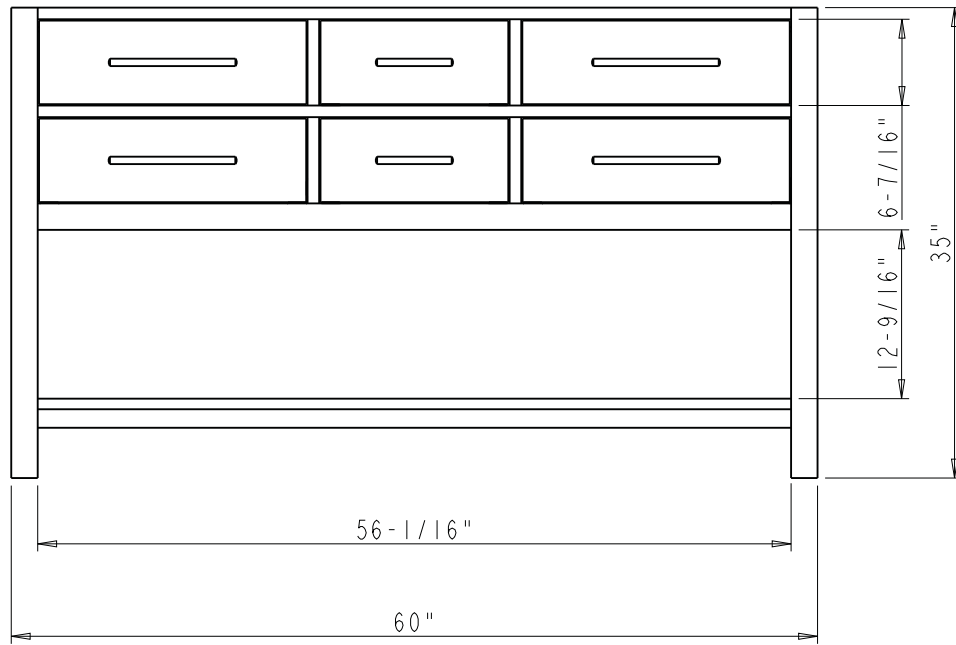
1. Finish: See Table
2. Hardware: See Table
3. Hinge: 700.0537.25+600.1234.05 (4 set)
4. Slide: USE58-300-18 + USCLIP2ND-4W(4 set)
5. Lid Stay (2 pcs)
6. The tolerance is +/- 1/8"


Item number	Finish	Deco Hardware			
		Item number	Qty	Item number	Qty
VN2WAV-60-GR-NT	Grey	146SN	2	242SN	4
VN2WAV-60-WH-NT	White	146MB	2	242MB	4
VN2WAV-60-WG-NT	Weathered Grey	146MB	2	242MB	4

<p>hardware resources</p> <p>PROPRIETARY AND CONFIDENTIAL</p> <p>THE INFORMATION CONTAINED IN THIS DRAWING IS THE SOLE PROPERTY OF HARDWARE RESOURCES INC. ANY REPRODUCTION IN PART OR AS A WHOLE WITHOUT THE WRITTEN PERMISSION OF HARDWARE RESOURCES INC. IS PROHIBITED.</p> <p>DO NOT SCALE DRAWING</p>	ITEM#: VN2WAV-60	MATERIAL:	
	FINISH:	WEIGHT: 9	
	TOLERANCE UNLESS OTHERWISE SPECIFIED: X ±0.20 X.X ±0.10 X.XX ±0.05 ANGULAR: ±0.5°	UNITS:	DATE: Nov-22-21
	APPROVED BY: Tony.Huang	DATE:	REVISION:
	APPROVED BY:	DATE:	
	RELEASE LEVEL:	REVISION:	



	ITEM#: VN2WAV - 60		MATERIAL:		
	FINISH:		WEIGHT: 9		
<p>PROPRIETARY AND CONFIDENTIAL</p> <p>THE INFORMATION CONTAINED IN THIS DRAWING IS THE SOLE PROPERTY OF HARDWARE RESOURCES INC. ANY REPRODUCTION IN PART OR AS A WHOLE WITHOUT THE WRITTEN PERMISSION OF HARDWARE RESOURCES INC. IS PROHIBITED.</p>	PROJECTION 		DATE: Mar - 24 - 20		
	TOLERANCE UNLESS OTHERWISE SPECIFIED:		UNITS:	DRAWN BY: <i>Hugo.cai</i>	DATE:
	X ±0.20		SIZE:	APPROVED BY:	DATE:
	X.X ±0.10		SHEET:	RELEASE LEVEL:	REVISION:
X.XX ±0.05		DO NOT SCALE DRAWING			
ANGULAR: ±0.5°					



 PROPRIETARY AND CONFIDENTIAL THE INFORMATION CONTAINED IN THIS DRAWING IS THE SOLE PROPERTY OF HARDWARE RESOURCES INC. ANY REPRODUCTION IN PART OR AS A WHOLE WITHOUT THE WRITTEN PERMISSION OF HARDWARE RESOURCES INC. IS PROHIBITED.	ITEM:	VN2WAV - 60		MATERIAL:
	FINISH:			WEIGHT:
	TOLERANCE UNLESS OTHERWISE SPECIFIED:	UNITS:	DRAWN BY:	DATE:
	SIZE:	APPROVED BY:	Hugo.cai	
ANGULAR: ±0.5°	RELEASE LEVEL:	Mar - 24 - 20		REVISION:
DO NOT SCALE DRAWING	SHEET:		PROJECTION 