
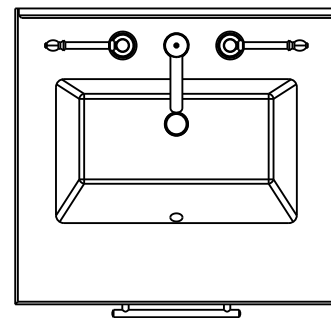
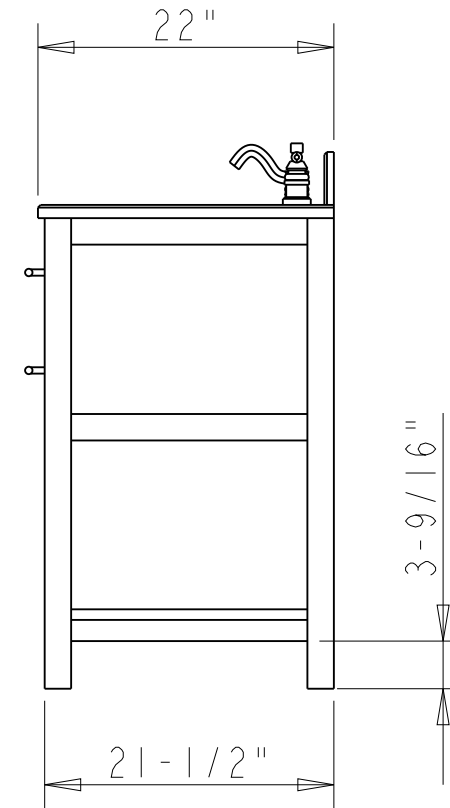
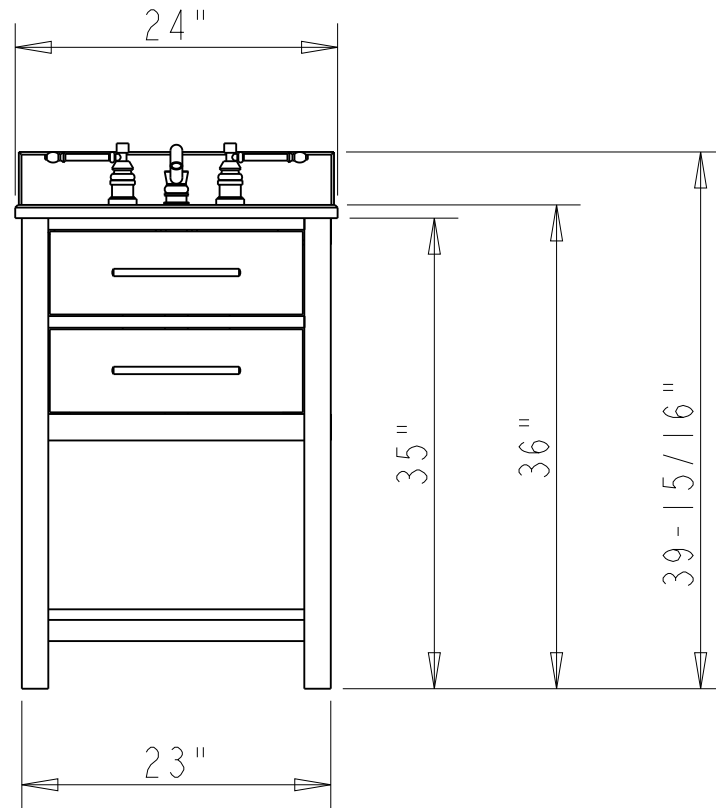


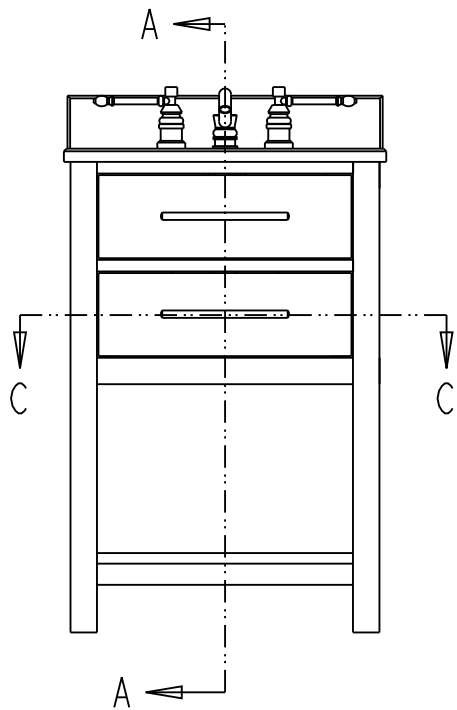
Specification:

1. Finish: White
2. Hardware: 242MB (2 pcs)
3. Hinge: 700.0537.25+600.1234.05 (2 pcs)
4. Slide: USE58-300-18+US-CLIP-4W (1 set)
5. Jewel Case: TOSSI4-REPL
6. Lid Stay (1 pcs)
7. Bowl: H8910WH
8. The tolerance is +/- 1/8"

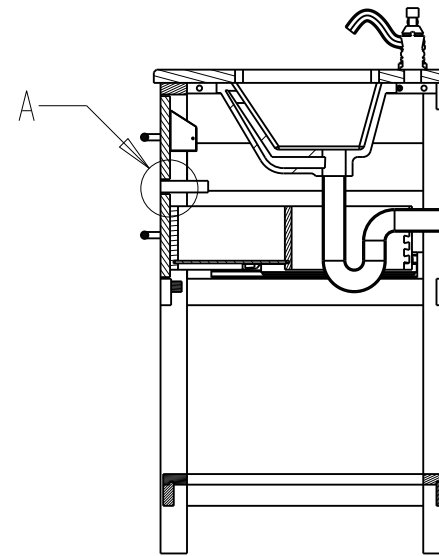
 PROPRIETARY AND CONFIDENTIAL <small>THE INFORMATION CONTAINED IN THIS DRAWING IS THE SOLE PROPERTY OF HARDWARE RESOURCES INC. ANY REPRODUCTION IN PART OR AS A WHOLE WITHOUT THE WRITTEN PERMISSION OF HARDWARE RESOURCES INC. IS PROHIBITED.</small>	ITEM#: VN-WAV-24-WH-XX		MATERIAL:	
	FINISH:		WEIGHT:	
	TOLERANCE UNLESS OTHERWISE SPECIFIED: X ±0.20 X.X ±0.10 X.XX ±0.05 ANGULAR: ±0.5° DO NOT SCALE DRAWING		UNITS:	
	SIZE:		DRAWN BY: Alexander.W	
SHEET:		APPROVED BY:		DATE: Jan-17-19
RELEASE LEVEL:		REVISION:		



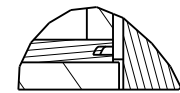
hardware resources PROPRIETARY AND CONFIDENTIAL THE INFORMATION CONTAINED IN THIS DRAWING IS THE SOLE PROPERTY OF HARDWARE RESOURCES INC. ANY REPRODUCTION IN PART OR AS A WHOLE WITHOUT THE WRITTEN PERMISSION OF HARDWARE RESOURCES INC. IS PROHIBITED.	ITEM#: VN-WAV-24-WH-XX		MATERIAL:	
	FINISH:		WEIGHT:	
	TOLERANCE UNLESS OTHERWISE SPECIFIED: X ±0.20 X.X ±0.10 X.XX ±0.05 ANGULAR: ±0.5° DO NOT SCALE DRAWING		PROJECTION	
	UNITS:	DRAWN BY:	DATE:	
SIZE:	APPROVED BY:	Jan-17-19		DATE:
SHEET:	RELEASE LEVEL:	REVISION:		



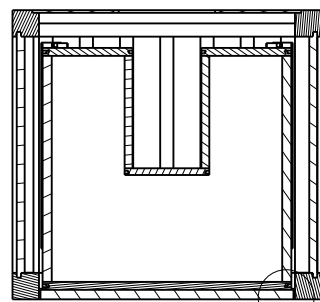
DETAIL



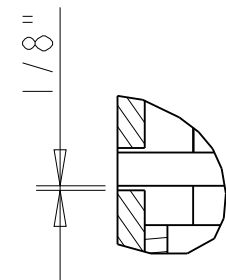
SECTION A-A



DETAIL B
SCALE 0.200



SECTION C-C ———— DETAIL B



DETAIL A
SCALE 0.200

hardware resources PROPRIETARY AND CONFIDENTIAL THE INFORMATION CONTAINED IN THIS DRAWING IS THE SOLE PROPERTY OF HARDWARE RESOURCES INC. ANY REPRODUCTION IN PART OR AS A WHOLE WITHOUT THE WRITTEN PERMISSION OF HARDWARE RESOURCES INC. IS PROHIBITED.	ITEM#: VN-WAV-24-WH-XX		MATERIAL:	
	FINISH:		WEIGHT:	
	TOLERANCE UNLESS OTHERWISE SPECIFIED: X ±0.20 X.X ±0.10 X.XX ±0.05 ANGULAR: ±0.5°		DATE: Jan-17-19	
	DO NOT SCALE DRAWING		REVISION:	
UNITS:		DRAWN BY: Alexander.W		DATE:
SIZE:		APPROVED BY:		DATE:
SHEET:		RELEASE LEVEL:		REVISION:

