

60D" CHICAGO VANITY

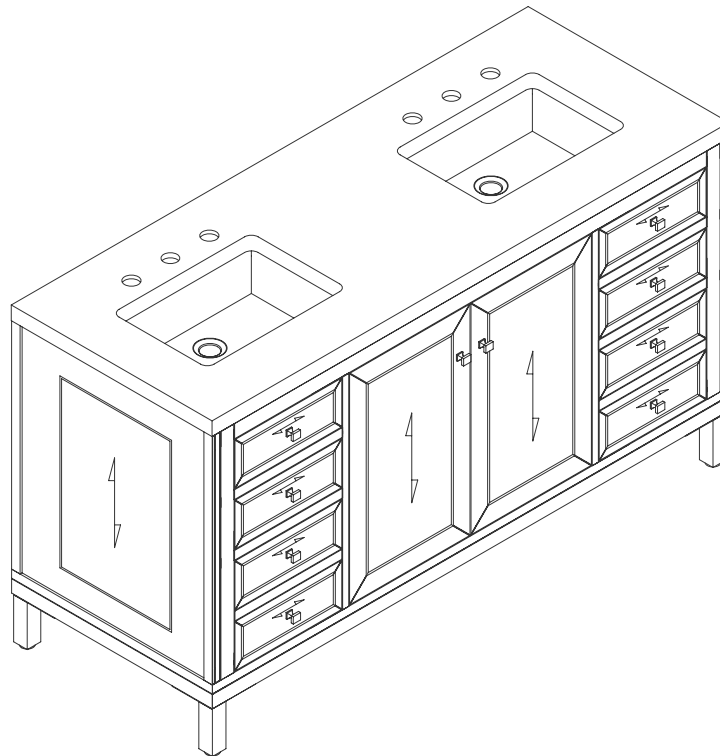
503-V60D-M-GW

503-V60D-M-SC

503-V60D-M-WLW

JAMES MARTIN
VANITIES

FREEPOWER COMPATIBLE



Features and Materials

Solids: Poplar

Veneers: Poplar

Panels: Plywood

Installation Type: Floor Standing with Legs or Wall Mounted

Number of Basins: Two, with Optional 3cm Top

Vanity Top Included: No, Optional 3cm Tops Available with Sinks

Overflow: Yes, Front Facing

Number of Doors: Two

Number of Drawers: Four

Number of Tip Outs: Two

Assembly Type: Installation of Legs and Optional 3cm Top

Assembly Type: Remove Legs to Wall Hang (hardware included)

Drawer Box Material and Construction: 12mm Plywood/English

Dovetail Joinery

Hardware Material and Finish: GW/SC - Antimony in

Champagne Brass; WLW - Antimony in Satin Nickel

Fits Drain Hole Size: 1 3/4"

Full Extension, Soft Close Glides

European Soft Close Hinges

Aluminum Laminate Drawer Liners

Adjustable Levelers

Dimension

Width: 59-7/8"

Depth: 23-1/4"

Height: 32-3/8"

Rough-In Height: 21"

Visit website for warranty and installation information

www.jamesmartinvanities.com

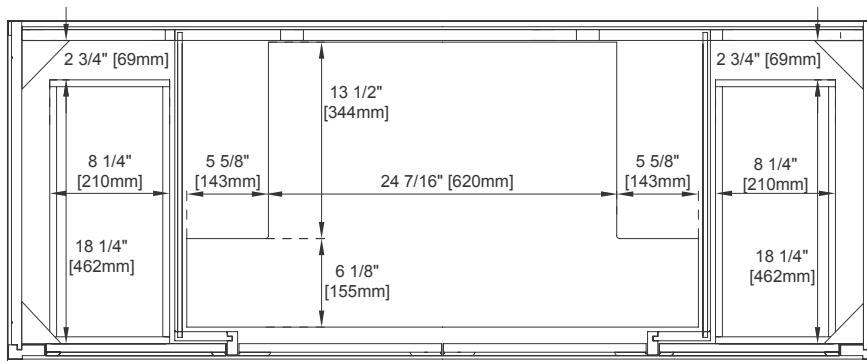
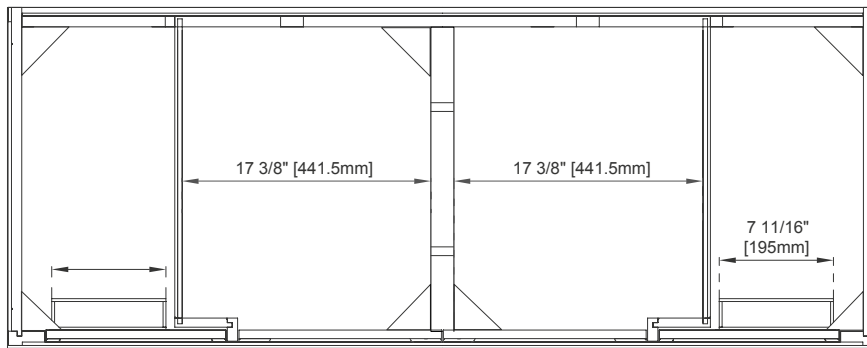
60D" CHICAGO VANITY

503-V60D-M-GW

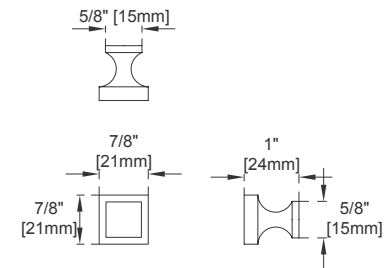
503-V60D-M-SC

503-V60D-M-WLW

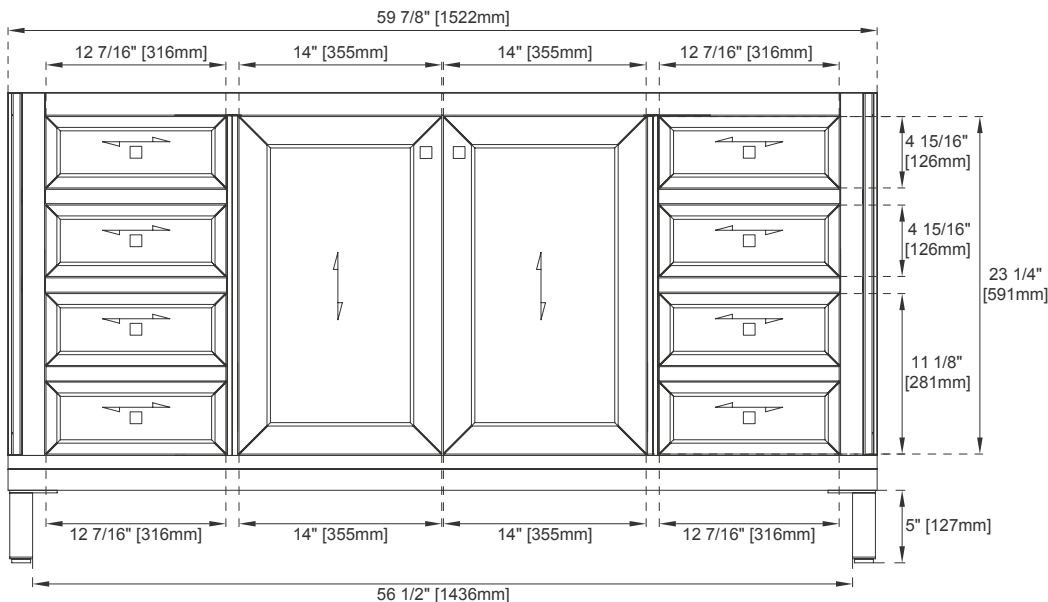
JAMES MARTIN
VANITIES



Top View



Knob



Front View

All dimensions are nominal

Diagrams are of cabinet only—James Martin Optional Countertops and sinks are not shown

Visit website for warranty and installation information

www.jamesmartinvanities.com

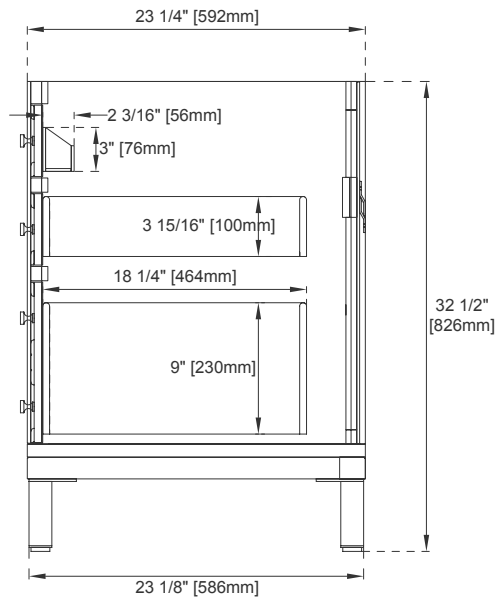
60D" CHICAGO VANITY

503-V60D-M-GW

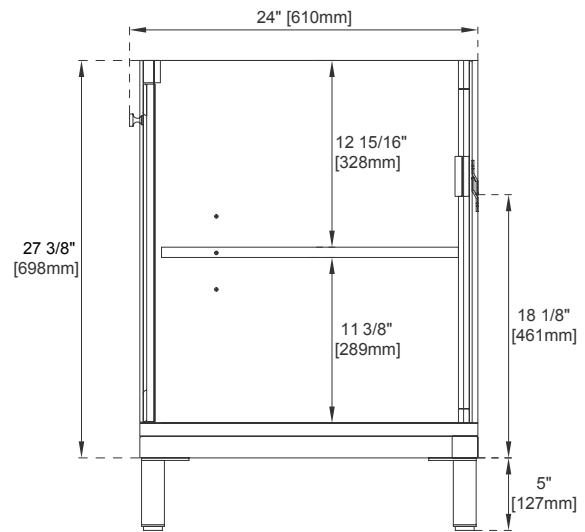
503-V60D-M-SC

503-V60D-M-WLW

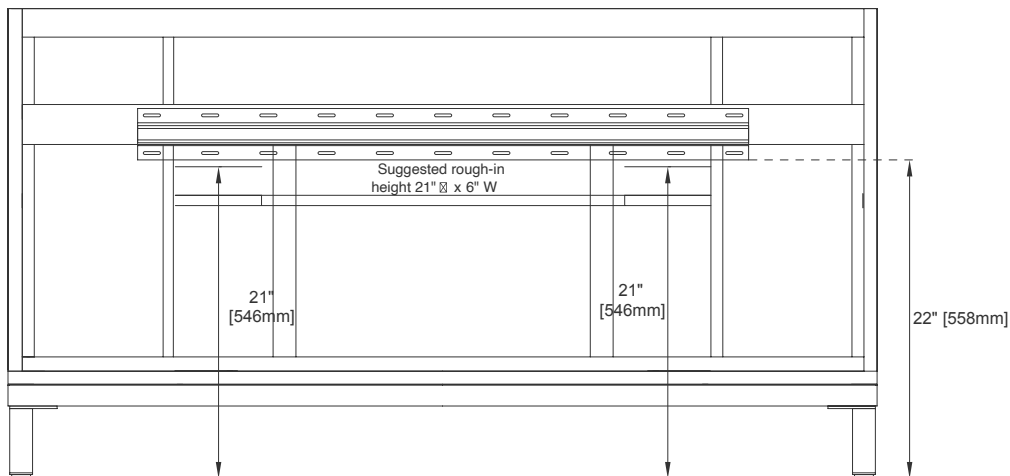
JAMES MARTIN
VANITIES



Side View 1



Side View 2



Back View

All dimensions are nominal

Diagrams are of cabinet only—James Martin Optional Countertops and sinks are not shown

Visit website for warranty and installation information

www.jamesmartinvanities.com