

72"

Item Number:

550-V72-CIN

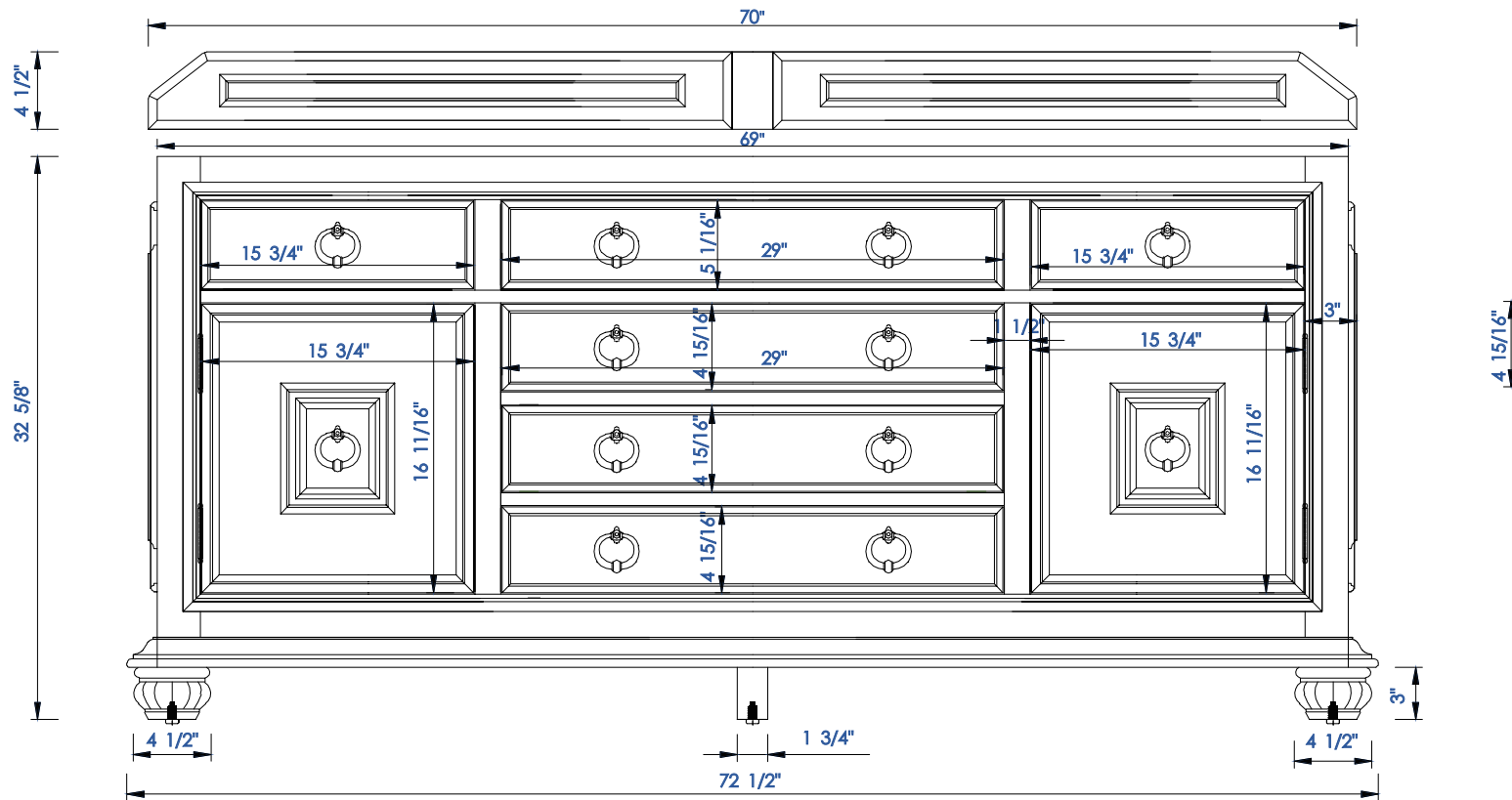
JAMES MARTIN



VANITIES

Mykonos 72" Cabinet

Diagrams with Dimensions
page 01 of 03



NOTE ONE: Countertops are not shown in these diagrams. (Cabinet Only)

NOTE TWO: Wood Backsplash(Shown) is designed for the molding detail to align with sinks in James Martin's Optional Countertops.

Customers' own countertops and sinks may align differently

Please consult our website for Countertop Diagrams: www.jamesmartinvanities.com

72"

Item Number:

550-V72-CIN

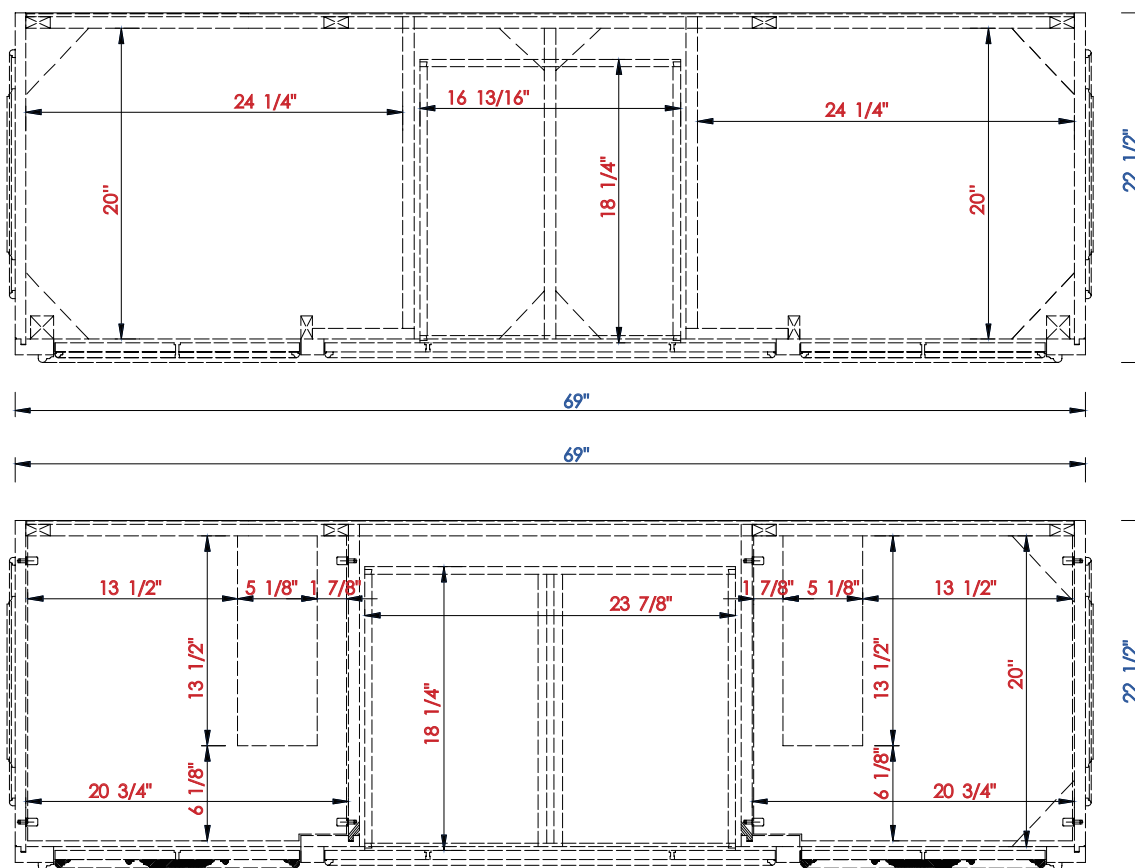
JAMES MARTIN



VANITIES

Mykonos 72" Cabinet

Diagrams with Dimensions
page 02 of 03



NOTE ONE: Countertops are not shown in these diagrams. (Cabinet Only)

NOTE TWO: Internal Shelves (Shown) are designed to align with sinks in James Martin's Optional Countertops.

Customers' own countertops and sinks may align differently, and modification may be required.

Please consult our website for Countertop Diagrams: www.jamesmartinvanities.com

72"

Item Number:

550-V72-CIN

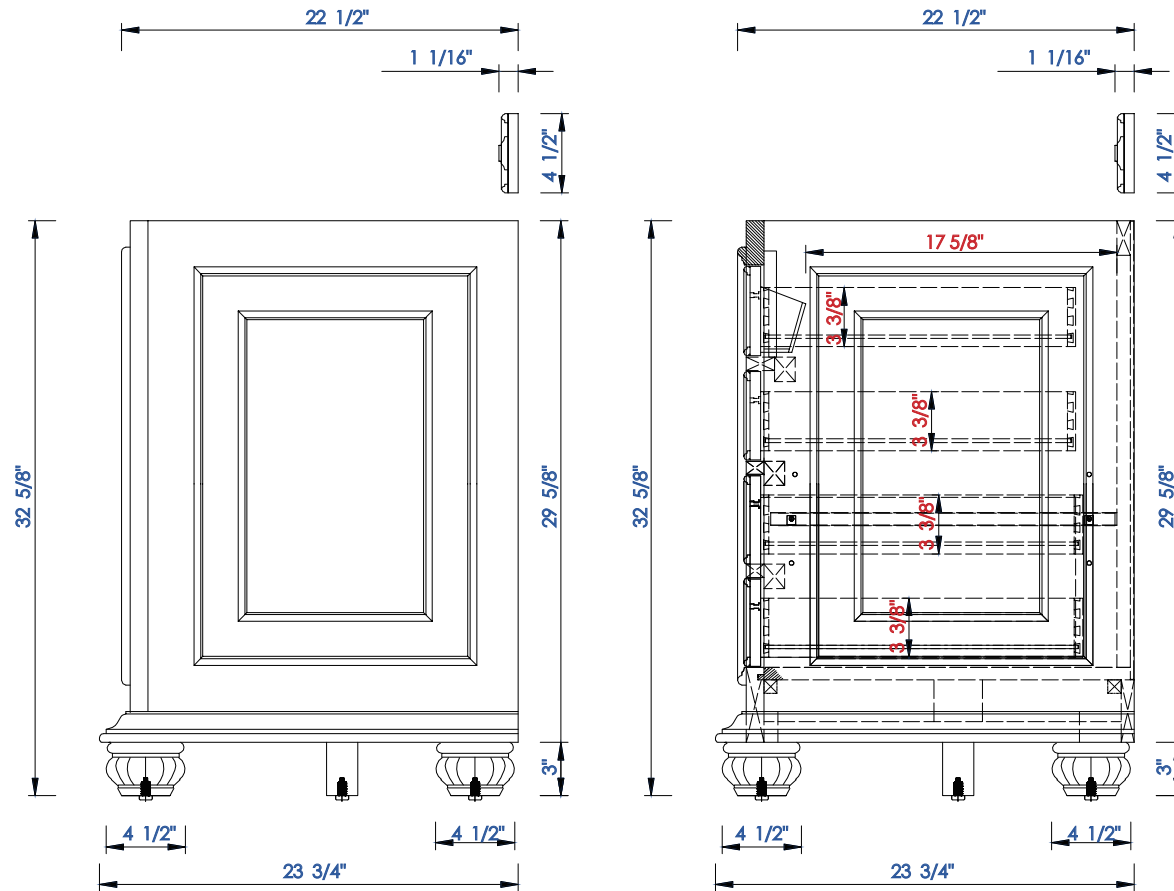
JAMES MARTIN



VANITIES

Mykonos 72" Cabinet

Diagrams with Dimensions
page 03 of 03



NOTE ONE: Countertops are not shown in these diagrams. (Cabinet Only)

NOTE TWO: Wood Backsplash(Shown) is designed for the molding detail to align with sinks in James Martin' s Optional Countertops.

Customers' own countertops and sinks may align differently

Please consult our website for Countertop Diagrams: www.jamesmartinvanities.com

1828mm

Item Number:
550-V72-CIN

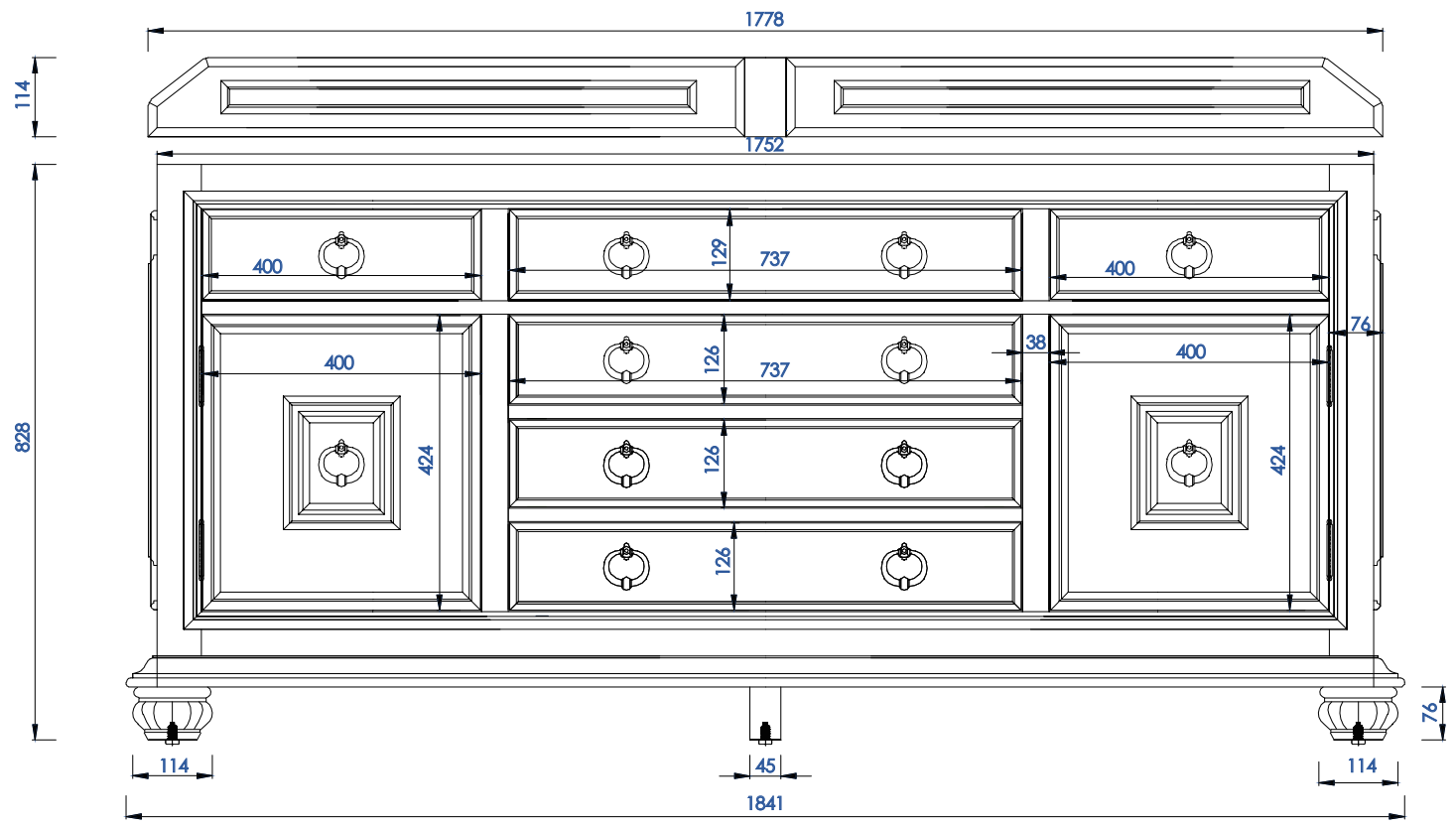
JAMES MARTIN



VANITIES

Mykonos 1828mm Cabinet

Diagrams with Dimensions
page 01 of 03



NOTE ONE: Countertops are not shown in these diagrams. (Cabinet Only)
NOTE TWO: Wood Backsplash(Shown) is designed for the molding detail to align with sinks in James Martin' s Optional Countertops.
Customers' own countertops and sinks may align differently
Please consult our website for Countertop Diagrams: www.jamesmartinvanities.com

1828mm

Item Number:

550-V72-CIN

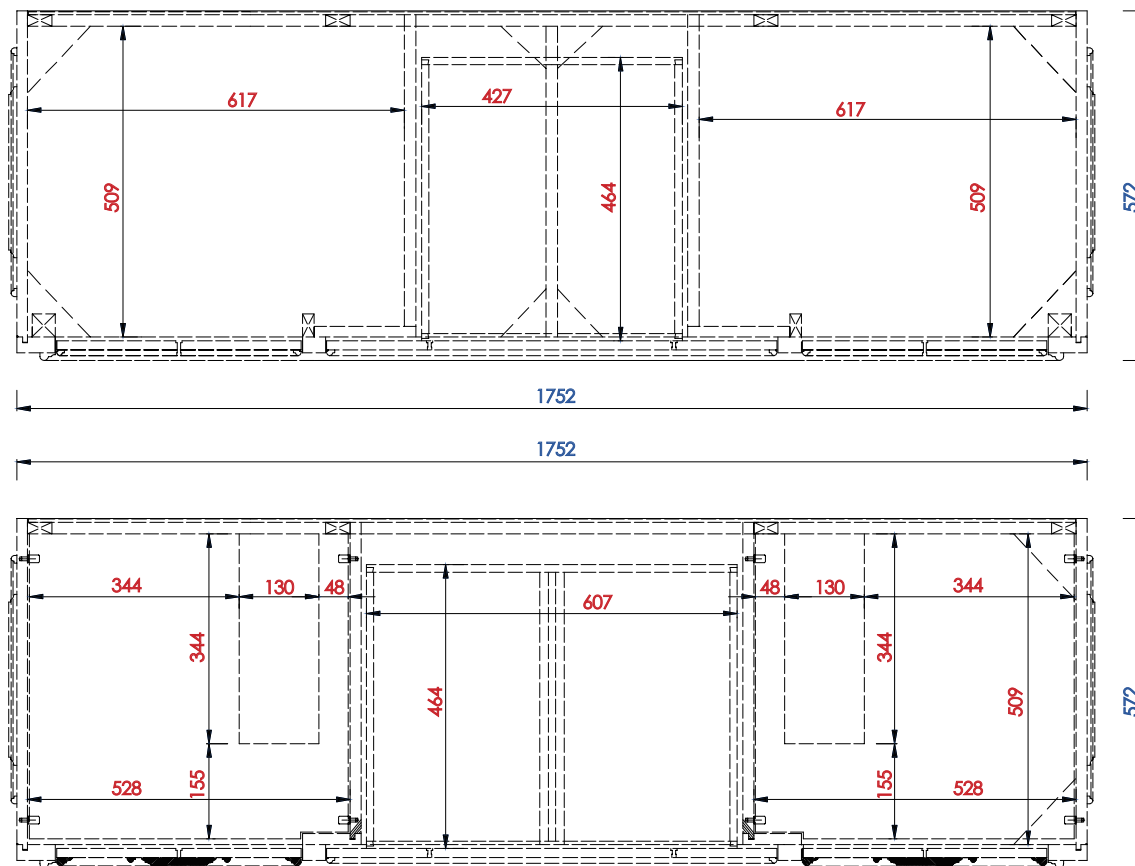
JAMES MARTIN



VANITIES

Mykonos 1828mm Cabinet

Diagrams with Dimensions
page 02 of 03



NOTE ONE: Countertops are not shown in these diagrams. (Cabinet Only)

NOTE TWO: Internal Shelves (Shown) are designed to align with sinks in James Martin's Optional Countertops.

Customers' own countertops and sinks may align differently, and modification may be required.

Please consult our website for Countertop Diagrams: www.jamesmartinvanities.com

1828mm

Item Number:

550-V72-CIN

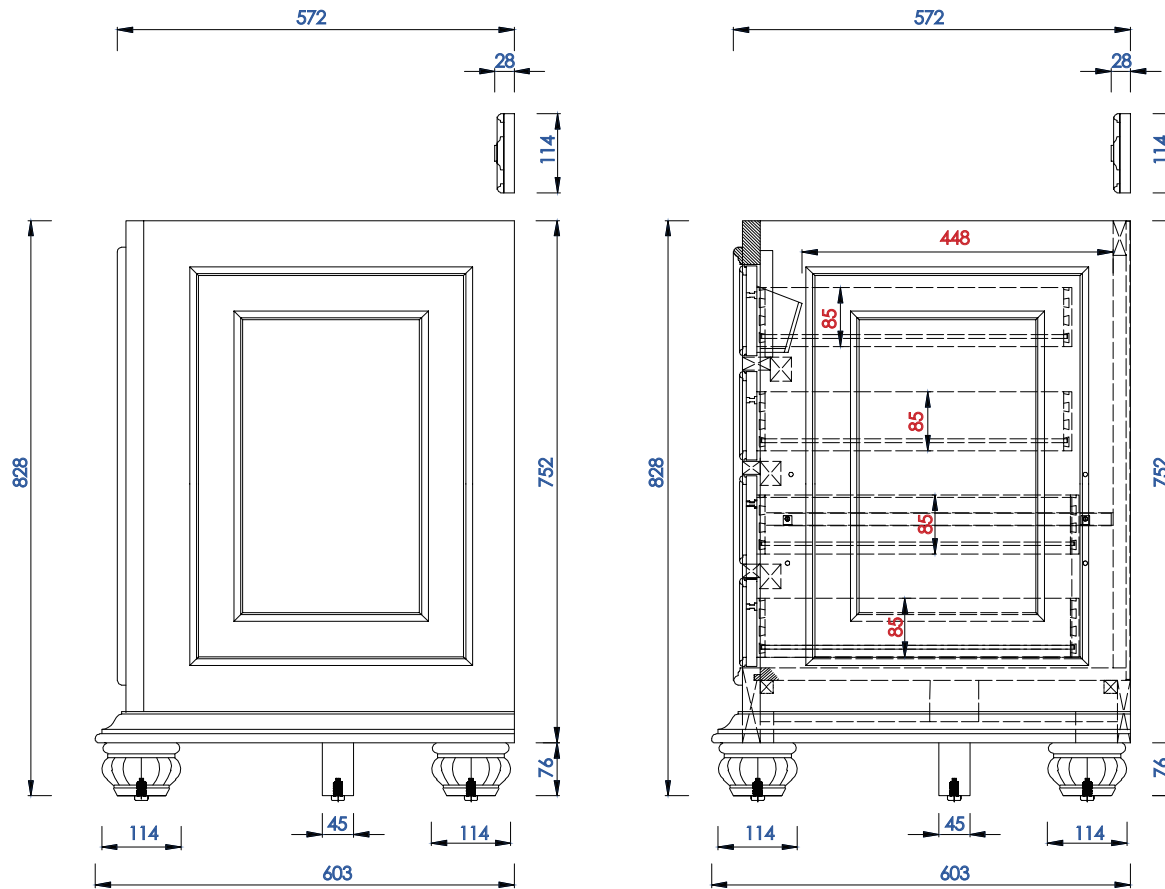
JAMES MARTIN



VANITIES

Mykonos 1828mm Cabinet

Diagrams with Dimensions
page 03 of 03



NOTE ONE: Countertops are not shown in these diagrams. (Cabinet Only)

NOTE TWO: Wood Backsplash(Shown) is designed for the molding detail to align with sinks in James Martin' s Optional Countertops.

Customers' own countertops and sinks may align differently

Please consult our website for Countertop Diagrams: www.jamesmartinvanities.com