

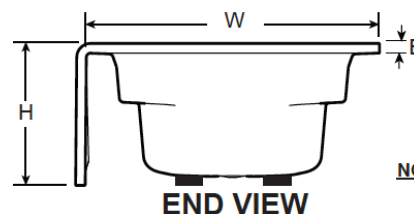
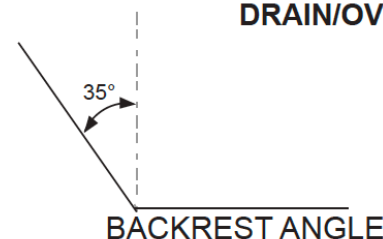
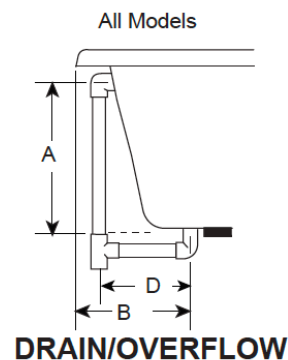
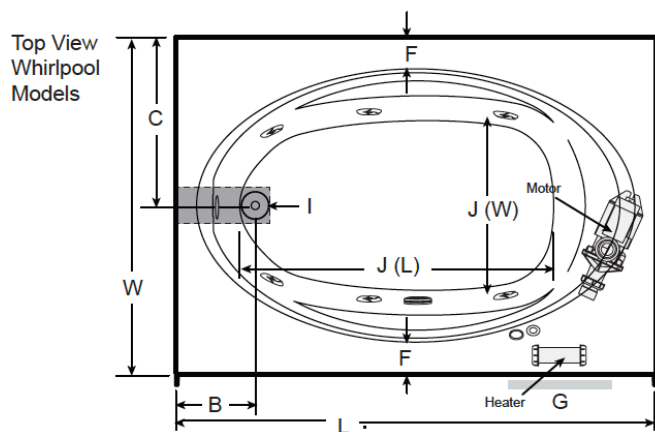
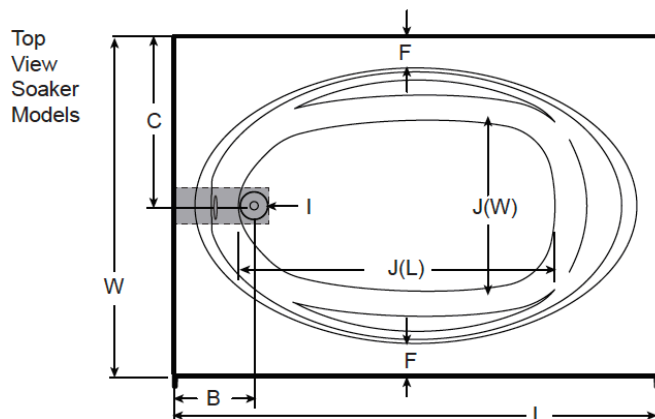
**Projecta™ 6042 Oval in Rectangle Skirted Whirlpool Bathtub**

Letter	Description	R4S6042W
-	Drain/Motor Location	LH / RH Drain & Right or Left Side Motor
-	Cutout	N/A
-	Total Weight	801 lbs (363 kg)
-	Floor Loading	45.8 lb/ft ² (224 kg/m ²)
-	Operating Gallons (Max)	56 gallons (212 liters)
-	Product Weight	85 lbs (39 kg)
-	Soaking Depth	12.75" (323 mm)
L	Outer Length	60" (1524 mm)
W	Outer Width	42" (1067 mm)
H	Overall Height	20.25" (514 mm)
A	Overflow Height	14" (355 mm)
B	Long Edge to Drain Center	9.90" (251 mm)
C	Short Edge to Drain Center	21" (533 mm)
D	Drain Shoe Length	8.50" (216 mm)
E	Deck/Flange Height	1.25" (32 mm)
F	Deck Width	3.88" (99 mm)
G	Service Access Dimensions	Removable Skirt Access
I	Floor Cutout for Drain	12" x 4" (305 mm x 102 mm)
J	Interior Dimensions (bottom of bath) J(L) x J(W)	42" x 24" (1067 mm x 610 mm)

WHIRLPOOL 6042 MODEL

Each component requires a separate, dedicated GFCI protected circuit

Model with components	GFCI Outlet (60Hz)
Motor/Pump	120V 15A
Heater (if available)	120V 15A

KEY DIMENSIONS* [NOTE: The overall dimensions are nominal with a tolerance of +0 and -.25" (6mm).]

NOTE: Drawings not to scale.

©2019 Jacuzzi Luxury Bath • For additional information, call Customer Service 800-288-4002 • www.jacuzzi.com/baths
Refer to installation instructions included with fixture before beginning installation. Please confirm product availability and specifications before commencing with any installation work.

PRODUCT SPECIFICATIONS AND AVAILABILITY ARE SUBJECT TO CHANGE WITHOUT NOTICE