



**PRIMO<sup>®</sup> BATHTUB  
WALL KIT**

**INSTALLATION INSTRUCTIONS**

**Jacuzzi Luxury Bath**

14525 Monte Vista Avenue  
Chino, CA 91710  
1-800-288-4002  
[www.jacuzzi.com](http://www.jacuzzi.com)



## Contents

|  |    |
|--|----|
| Contents .....   | 2  |
| Product Information .....                                  | 2  |
| Preparation .....  | 3  |
| Primo® Bathtub Wall Kit Installation Instructions .....    | 4  |
| Cleanup After Installation And General Maintenance .....   | 7  |
| Limited Warranty on Jacuzzi® Primo® Bathtub Wall Kit ..... | 9  |
| Warranty Registration Card .....                           | 11 |

## Product Information

### NOTE

Save these instructions for future use. Use the form below to record your model and serial number for future reference.

Date Purchased \_\_\_\_\_

Purchased From \_\_\_\_\_

Installed By \_\_\_\_\_

Serial Number \_\_\_\_\_

Model \_\_\_\_\_

**Installer:** Leave the manual for the homeowner.

**Homeowner:** Read this manual and keep for future reference.

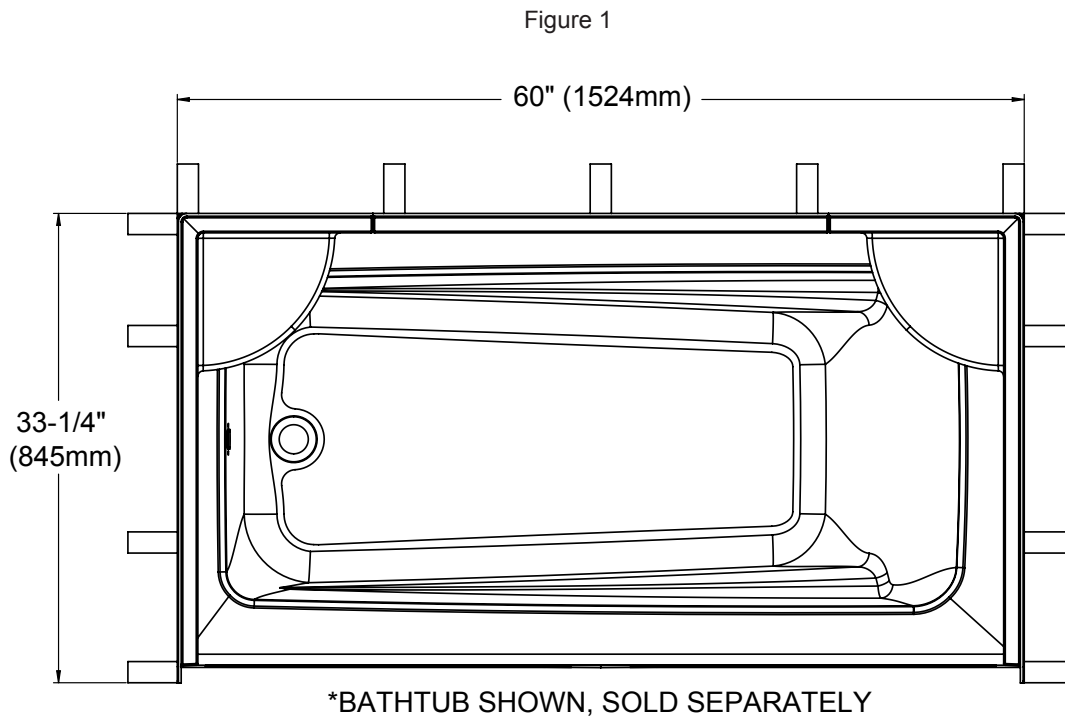
## Preparation

The Primo® Bathtub Wall Kits are designed to install directly over stud walls.

- ❶ Verify the framed-in alcove is plumb and square.
- ❷ Verify the bathtub is installed per manufacturer's recommendations.

### Installation for Primo® 6032 Bathtub Wall Kit

The studs should be located as shown (Figure 1).

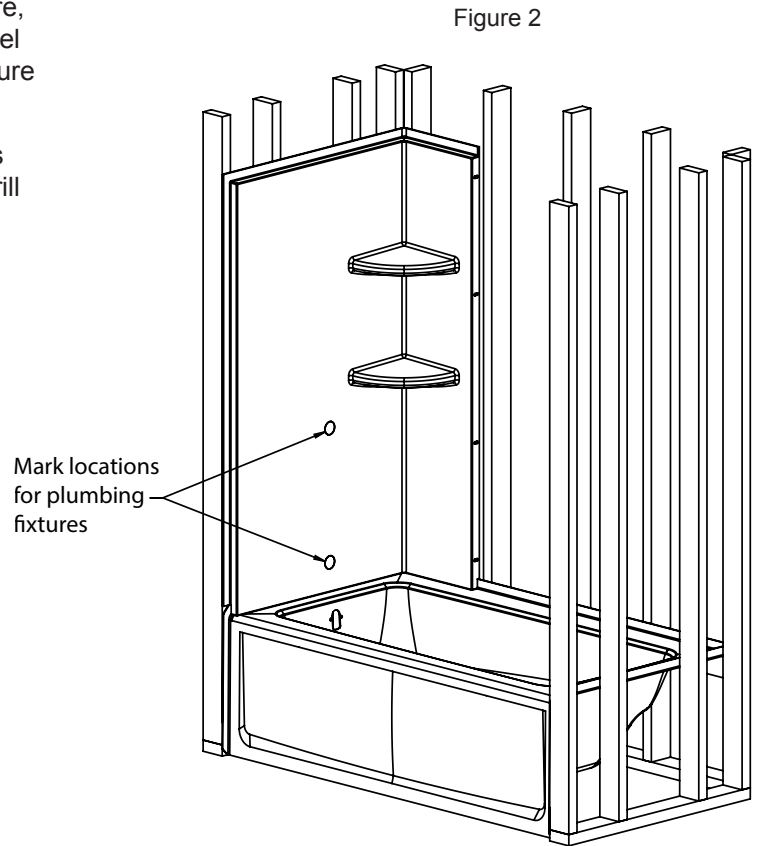


**Product specifications are subject to change without notice.**

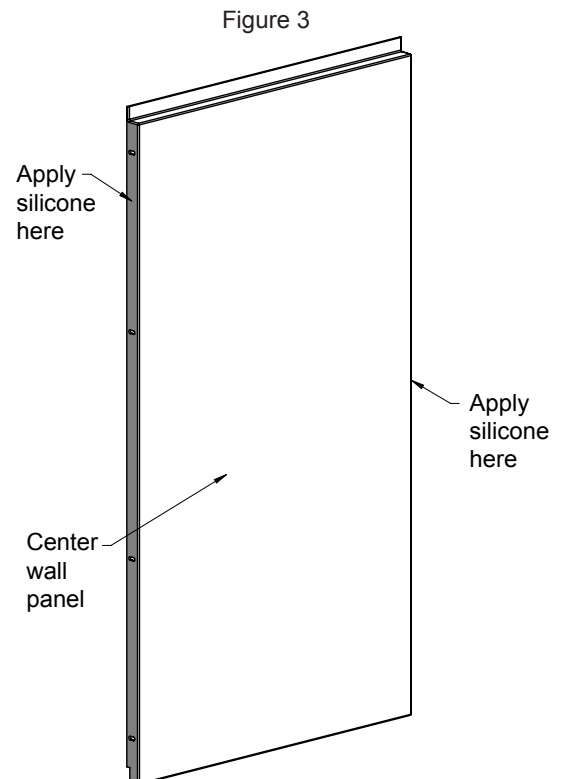
**Note:** This is a professional grade product. A knowledge of construction techniques, plumbing and electrical installation according to codes are required for proper installation and user satisfaction. We recommend that a licensed contractor perform the installation of all Jacuzzi Luxury Bath products. Our warranty does not cover improper installation related problems.

## Primo® Bathtub Wall Kit Installation Instructions

- 1 Depending on the location of the plumbing fixture, position either the right side or left side wall panel into the alcove. Mark the panel for plumbing fixture cutouts (Figure 2).
- 2 Refer to plumbing fixture installation instructions for hole dimensions and placement. Carefully drill out the holes using the proper sized hole saw.



- 3 Remove the side wall panel from the alcove. Pre-assemble the wall kit away from the alcove.
- 4 Apply a bead of silicone sealant along the edges of the center wall panel (Figure 3).



## Primo® Bathtub Wall Kit Installation Instructions (Continued)

- 5** Using the supplied hardware, assemble the three wall panels together (Figures 4 & 5). Be sure the surfaces are properly aligned.

Figure 4

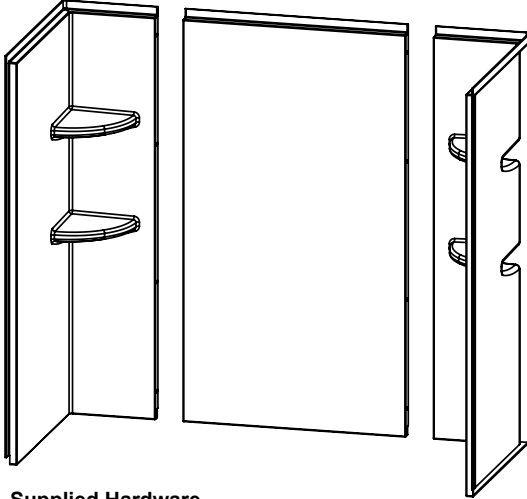
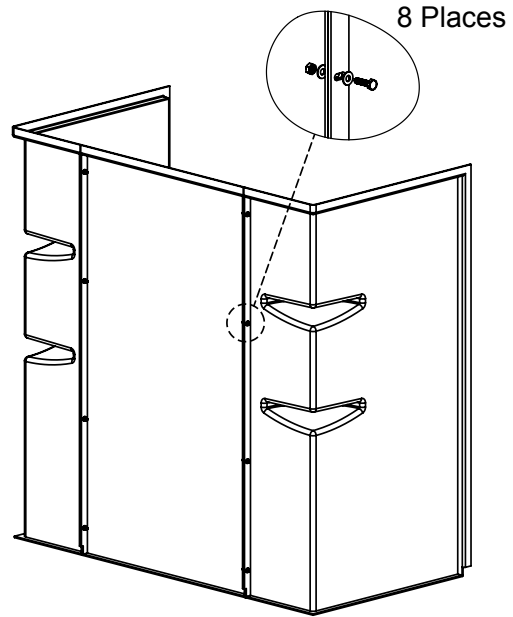


Figure 5



**Supplied Hardware**

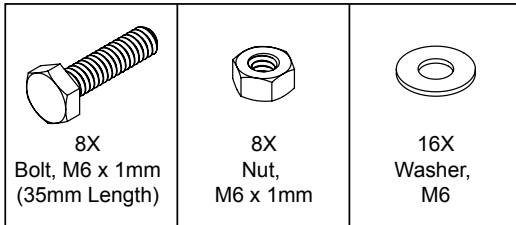
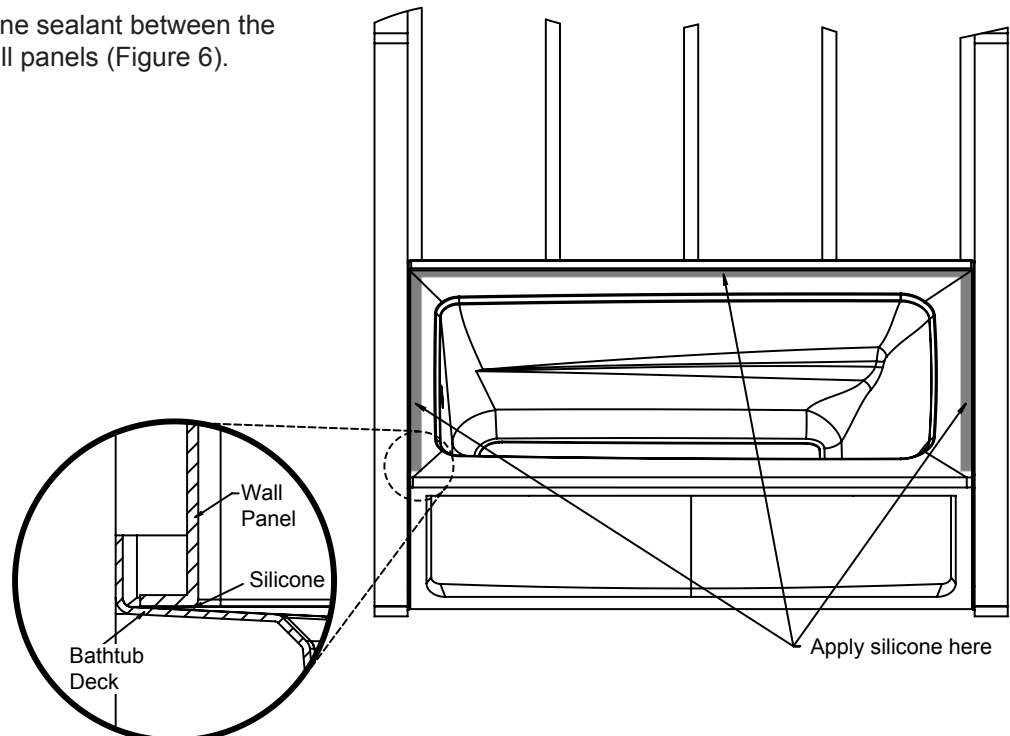


Figure 6

- 6** Apply a bead of silicone sealant between the bath tub deck and wall panels (Figure 6).

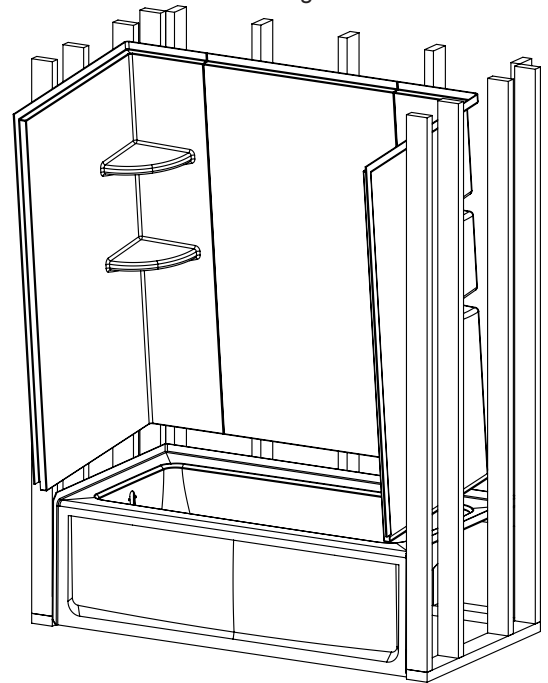


## Primo® Bathtub Wall Kit Installation Instructions (Continued)

- 7** Carefully position the assembled wall kit into the alcove and press firmly against the bath tub (Figure 7).

**WARNING:** Two or more adults are required to lift the assembled wall kit and position it into place.

Figure 7



- 8** To fasten the wall kit to wood framing, pre-drill top and front nailing flanges with a 1/8" (5mm) carbide bit, then fasten with #8 x 1-1/2" (38mm) self-tapping sheet metal screws (Figure 8). For fastening to concrete/block walls, use 1" (25mm) concrete nails with nailing tool or impact. It may be necessary to shim the nailing flange to close up any gaps between the wood studs and the flange (Figure 8).

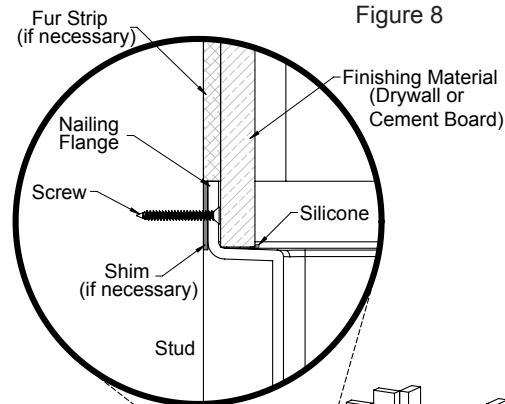
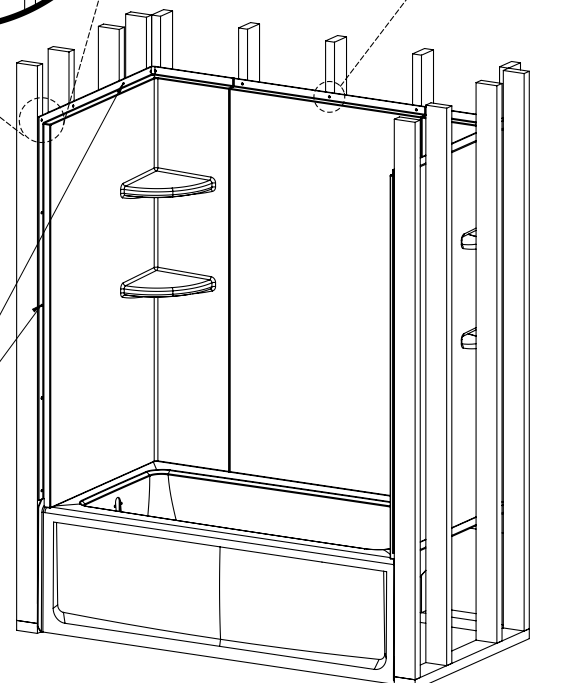


Figure 8

**NOTE:** Pre-drilling the nailing flanges is recommended. Fastening the screws without first pre-drilling the holes can cause cracking of the wall kit. Apply silicone over each fastener to ensure water tightness.

- 9** Apply a continuous bead of silicone sealant around the entire seam between the bath tub and wall kit, as well as the the seams between the wall panels. Allow sealant to cure per manufacturer's instructions.

Fasten screws to top and front nailing flanges



## Clean Up After Installation And General Maintenance



**CAUTION!** Do not use oil or oil-based cleaning products to clean your bathtub wall kit. Never use abrasive or caustic household cleaners on any Jacuzzi Luxury Bath product.

To avoid dulling and scratching the surface of the bathtub wall kit, never use abrasive cleaners. For most soiled surfaces, the following cleaning methods are recommended:

To clean your bathtub wall kit, simply use a mild, nonabrasive liquid detergent solution. You can protect and restore the gloss to a dulled acrylic surface by applying Meguiar's #10 Mirror Glaze, a product specifically designed for use on acrylic finishes. If Meguiar's is not available, use a fine grade automotive rubbing compound followed by an application of clear automotive paste wax.

Minor scratches which do not penetrate the color finish can be removed by lightly sanding with 600-grit wet/dry sandpaper. Restore the gloss using Meguiar's Mirror Glaze or automotive paste wax. Major scratches and gouges which penetrate the acrylic surface will require refinishing.



Notes:



## Limited Warranty on Jacuzzi® Primo® Bathtub Wall Kit

### LIMITED WARRANTY ON BATHTUB WALL KITS

Jacuzzi Luxury Bath ("Company") offers a one (1) year non-transferrable limited warranty to the original purchaser ("user") of a Jacuzzi®Primo® Bathtub Wall Kit ("Bathtub Wall Kit"), for personal or single family residential use, subject to the following terms, conditions and limitations. The Company will repair or replace, at its sole option, the Bathtub Wall Kit or its component parts in accordance with the terms, conditions and limitations set forth in this limited warranty. Units in commercial use are excluded from any warranty coverage whatsoever. PLEASE READ THIS ENTIRE LIMITED WARRANTY, AS EXCLUSIONS AND CONDITIONS APPLY. The Bathtub Wall Kit is warranted against defects in material and workmanship. The warranty coverage does not cover defects or water loss due to installation and/or assembly of the Bathtub Wall Kit or any component, or the improper sealing of any component. If at any time during the warranty period the Bathtub Wall Kit or any component part fails due to a covered defect, Company will repair the Bathtub Wall Kit or provide a replacement Bathtub Wall Kit or part, free of charge. This warranty does not apply to any display models or to any options or accessories not specifically mentioned herein. Warranty coverage begins on the date the unit was originally purchased by the user. The warranty provided by Company does not cover labor, and is a parts only warranty. Defects or damage caused by the use of other than genuine Company parts is not covered by this warranty.

This limited warranty does not cover damage caused by installation, neglect, misuse, abuse, the unit's prior usage as an operational display, defects that should have been discovered before installation, or failure to follow the instructions and warnings set forth in the owner's/installation manual. Inspecting the unit prior to installation is the responsibility of the user, as well as the installer or building contractor who acts on behalf of the user. In the event of a problem, the unit must not be installed. The Company is not responsible for failures or damage that could have been discovered, repaired, or avoided by proper inspection and testing prior to installation. Damage occurring in transit is the responsibility of the carrier. Damage occurring to the unit during installation is the responsibility of the installer, building contractor and/or user, and damage occurring thereafter is the responsibility of the user. The distributor, dealer and user are responsible for knowing local code requirements and notifying the installing contractor of these requirements at the time of purchase. The Company is not responsible for costs to modify any product to obtain any code approval, such as city, county, or state building codes in U.S.A. or federal, municipal, provincial or other codes in Canada and Mexico.

### EXCLUSION OF IMPLIED WARRANTIES, WARRANTY LIMITATIONS AND

#### EXCLUSIONS

IMPLIED WARRANTIES OF MERCHANTABILITY AND FITNESS FOR A PARTICULAR PURPOSE ARE DISCLAIMED ALTOGETHER OR TO THE FULLEST EXTENT ALLOWED BY LAW. This Limited Warranty takes the place of all other warranties, express or implied, in fact or at law, including implied warranties of merchantability and fitness for a particular purpose. All warranty repair must be performed by Company or its designated representative using authorized Jacuzzi® parts. Company reserves the right to use replacement parts that may be different from the part(s) that accompanied the original Bathtub Wall Kit, including but not limited to different in appearance, configuration, performance and/or structure. No agent, dealer, distributor, service company or other party is authorized to change, modify or extend the terms of this limited warranty in any manner whatsoever. The limited warranty does not cover defects, damage, or failure caused by common carrier, installer, user, or other persons, pets, or rodents, or resulting from, without limitation, any of the following: careless handling, including negligence of any party; modification of any type for any reason (including modification to meet local codes); improper installation (including installation not in accordance with instructions and specifications provided with the unit); connections made by the installer of the Bathtub Wall Kit or any component that was not installed in accordance with the Installation Instructions; misuse; abuse; incorrect operation, or lack of proper routine maintenance; installation of other products on (or attached to) the Bathtub Wall Kit; operation of the unit at inappropriate water temperature; use of chemicals, abrasives, acids, solvents, or cleaners; or acts of God, such as lightning, floods, earthquakes, etc. In addition, THE COMPANY WILL NOT BE RESPONSIBLE FOR INCIDENTAL OR CONSEQUENTIAL DAMAGES or losses arising from any cause (e.g., water damage to carpet, ceiling, tiles, marble, loss of use, etc.) including but not limited to its own negligence; damages to, respecting, or resulting from: plated parts when chemicals or cleaning products are used on the Bathtub Wall Kit; hard water conditions; optional Bathtub Wall Kit equipment not manufactured by the Company but supplied by a dealer, installer or the Company; the unit's prior usage as an operational display; or defects that should have been discovered before installation. This exclusion applies even if Company was advised in advance of the possibility of such damages. This limited warranty does not include: labor, transportation, or other costs incurred in the removal and/or reinstallation of the original unit and/ or installation of a replacement unit; shipping charges incurred in sending the original unit to Company and/ or Company sending a replacement unit to user; any costs related to obtaining access for repair; or loss of use damage, including loss of sales, profit or business advantage of any kind under any circumstances. Bathtub Wall Kit units are excluded from any warranty coverage if any addition, deletion, or modification of any kind whatsoever has been made to the unit (or to any component). Warranty coverage is provided in the United States of America, Canada and Mexico only. The liability of Company under this limited warranty, if any, shall not exceed the original amount paid for the Bathtub Wall Kit or other product claimed to be defective. Dated proof of purchase of Bathtub Wall Kit or other product is required for a warranty claim. These disclaimers shall be equally applicable to any service provided by Company and its designated representatives.

### WARRANTY REGISTRATION

To register your product, fill out and return to the Company the Warranty Registration card within thirty (30) days from the date of purchase.

## RESPONSIBILITIES OF OTHERS

Inspecting the unit prior to installation is the responsibility of the user, as well as the installer or building contractor who acts on behalf of the user. They are responsible for ensuring the unit is free of defect or damage. In the event of a problem, the unit must not be installed. The Company is not responsible for failures or damage that could have been discovered, repaired, or avoided by proper inspection and testing (including proper water testing) prior to installation. Damage occurring in transit is the responsibility of the carrier. The user or installer **MUST** open the crate and inspect the unit for damage when it is delivered. If damage is discovered, it must be reported immediately to the seller and the carrier in writing, and an inspection requested. Failure of the carrier to respond should be reported to the seller and the carrier. Your freight claims should be filed promptly thereafter. Damage occurring to the unit during installation is the responsibility of the installer, building contractor and/or user, and damage occurring thereafter is the responsibility of the user. Failure of any optional equipment is the sole responsibility of the equipment manufacturer except as provided above and shall not extend to or apply to any replacement parts for the options and accessories. Any replacement parts shall be covered only by the original equipment manufacturer warranty, if any. The distributor, dealer and user are responsible for knowing local code requirements and notifying the installing contractor of these requirements at the time of purchase. The Company is not responsible for costs to modify any product to obtain any code approval, such as city, county, or state building codes in U.S.A. or federal, municipal, provincial or other codes in Canada and Mexico.

## WARRANTY CLAIM PROCEDURES

Company will honor a valid warranty claim when the following conditions have been met: the failure is of the nature or type covered by the warranty; the user has informed a Company Warranty Department Representative of the nature of the problem during the warranty period; conclusive evidence (e.g., original dated proof of purchase) is provided to Company proving that the failure occurred or was discovered within the warranty period; if requested by Company, an authorized independent service person or Company representative has been permitted to inspect the Bathtub Wall Kit during regular business hours within a reasonable time after the problem was reported by the user; if requested by Company, user provides Company with information and documentation/ photographs needed to verify the claim; and, if requested by Company, user sends Company any part or the entire Bathtub Wall Kit claimed to be defective, freight prepaid. In order to submit a warranty claim, contact Jacuzzi Luxury Bath at: [www.jacuzzi.com](http://www.jacuzzi.com) or Warranty Department, 14525 Monte Vista Avenue, Chino, California 91710, (800) 288-4002. All replacement parts, equipment, and repairs shall assume the remaining warranty period of the part(s) replaced. The Company's warranty obligation shall be discharged upon tender of replacement or repair. The customer's refusal to accept the tender terminates the Company's warranty obligation.

**LEGAL RIGHTS:** This Limited Warranty gives you specific legal rights. There are no warranties applicable to Jacuzzi® products except as expressly stated herein or as implied by applicable state and federal laws. You may also have other rights that vary from state to state. Some states do not allow limitations on how long an implied warranty lasts, disclaimer of certain warranties, or the exclusion or limitation of incidental damages, so some of the above limitations may not apply to you. Company will not be responsible for any statements or representations made in any form that go beyond, are broader than or are inconsistent with any authorized literature or specifications furnished by the Company.

Ninety-Day  
Parts Only  
Limited Warranty  
On  
Accessory(ies)



Jacuzzi® Luxury Bath  
14525 Monte Vista Avenue  
Chino, California 91710



WARRANTY REGISTRATION CARD

To complete your registration, visit our website at www.jacuzzi.com or fill out and mail this card to the address printed on the other side within thirty (30) days from date of purchase in order for this warranty to be come effective.



Purchaser's Name \_\_\_\_\_
Purchaser's Address \_\_\_\_\_
City \_\_\_\_\_ State \_\_ Zip \_\_\_\_
Home Phone: \_\_\_\_\_ Cell Phone: \_\_\_\_\_
Email: \_\_\_\_\_
Date of Purchase \_\_\_\_\_
Model Name \_\_\_\_\_
Serial Number \_\_\_\_\_
Dealer's Name \_\_\_\_\_
Dealer's Address \_\_\_\_\_

- 1. How did you first hear about this Jacuzzi® product?
2. Who first gave you specific information about this product (specifications, prices, etc.)?
3. What was the main reason for purchase?
4. Who finally decided which product you would buy?
5. Who installed?
6. What is the current market value of this property?
7. What is the age of the head of the household?
8. What other manufacturers did you consider?
9. How long did you shop before purchasing unit?
10. Approximately how long have you lived in this home?
11. Please indicate, approximately, the total annual income of your household.
12. Was your purchase process?
13. How technically aware were you of the patented Jacuzzi® jet system prior to your purchase?

Ninety-Day
Parts Only
Limited Warranty
On
Accessory(ies)