

Celia™ 6042 Skirted Air Bath Bathtubs

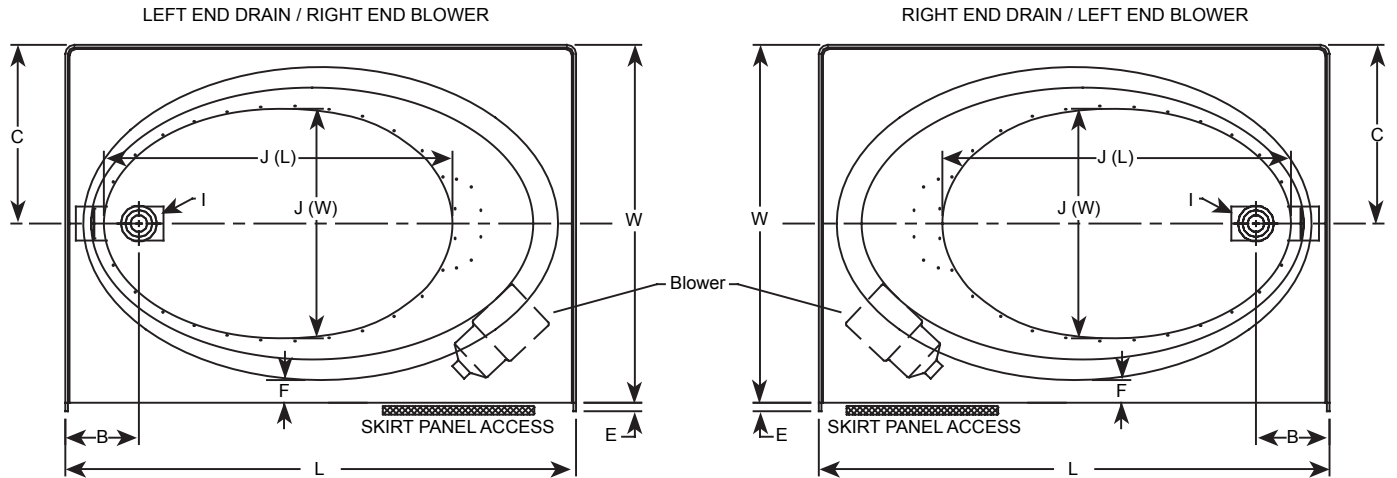
Letter	Description	English	Metric
-	Drain Location	Left / Right Hand	Left / Right Hand
-	Blower Location	Opposite end of drain location	Opposite end of drain location
-	Cutout	N/A	N/A
-	Total Weight	831 lb	430 kg
-	Floor Loading	47.5 lb/ft ²	309 kg/m ²
-	Operating Gallons (Min/Max)	33 Gal / 54 Gal	144 L / 253 L
-	Product Weight	91 lb	41 kg
L	Outer Length	60.00"	1524 mm
W	Outer Width	42.00"	1067 mm
H	Overall Height	18.50"	470 mm
A	Overflow Height	17.50"	445 mm
B	Long Edge to Drain Center	8.50"	216 mm
C	Short Edge to Drain Center	18.25"	464 mm
D	Drain Shoe Length	6.50"	165 mm
E	Flange Height	1.00"	25 mm
F	Deck Width	2.00"	51 mm
G	Service Access Dimensions	See Illustration Below	See Illustration Below
I	Floor Cutout for Drain	12.0" x 4.0"	305 mm x 102 mm
J	Interior Dimensions: J(L) x J(W)	41.00" x 27.00"	1041 mm x 686 mm
-	Number of Injectors	32	32

NOTE

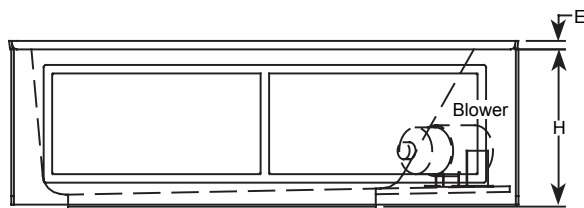
The overall dimensions are nominal with a tolerance of +0 and -.25" (6mm).
 Electrical Specifications
 (Each component requires a separate, dedicated GFCI protected circuit)

Blower 120V 15A 60HZ

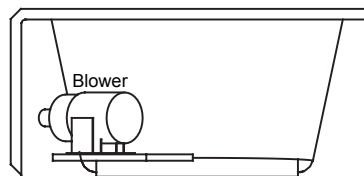
Key Dimensions



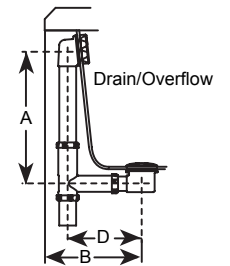
*Deck width reflects only area indicated on detail.



Side View
(LH Drain)



End View
(LH Drain)



NOTE: Drawings not to scale.