



Cetra® 6036 Skirted Bathtub

Letter	Description	Soaking	Pure Air®	Whirlpool
-	Drain Location		LH/RH	
-	Equipment Location	--		Right/Left Side
-	Cutout Template		--	
-	Drop-In Cutout Dimensions (L x W)		--	
-	Total Weight	896 lbs (406 kg)	905 lbs (411 kg)	931 lbs (422 kg)
-	Floor Loading	60 lb/ft² (293 kg/m²)	60 lb/ft² (293 kg/m²)	62 lb/ft² (303 kg/m²)
-	Operating Gallons (Min./Max.)	67 Gal (254 L)	38/67 Gal (144/254 L)	47/67 Gal (178/254 L)
-	Product Weight	90 lbs (41 kg)	99 lbs (45 kg)	125 lbs (57 kg)
-	Soaking Depth		15.5" (394 mm)	
L	Outer Length		60" (1524 mm)	
W	Outer Width		36" (914 mm)	
H	Overall Height		21.25" (540 mm)	
A	Overflow Height		16.75" (425 mm)	
B	Long Edge to Drain Center		9" (229 mm)	
C	Short Edge to Drain Center		18" (457 mm)	
D	Drain Shoe Length		7" (178 mm)	
E	Flange Height		1" (25 mm)	
F	Deck Width*		1.25" (32 mm)	
G	Service Access Dimensions	No Service Access	Removable Access Panel**	
I	Floor Cutout for Drain	12" x 4" (305 mm x 102 mm)		
J	Interior Dimensions Bottom of Bath (L x W)	42" x 21.1" (1067 mm x 536 mm)		
K	Interior Dimensions Top of Bath (L x W)	51.5" x 30.1" (1308 mm x 765 mm)		
L2	Interior Depth - Drain End	19.5" (495 mm)		
M	Backrest Angle	37°		
N	Footprint (L x W)	--		

NOTE

The overall dimensions are nominal with a tolerance of +0 and -.25" (6 mm).

Electrical Specification (requires a separate, dedicated GFCI protected circuit):

Model with Components		GFCI (60Hz)
Soaking	Soaking Only	N/A
	Blower	120V 15A
Whirlpool	Motor/Pump	120V 15A
	Heater (Optional)	120V 15A

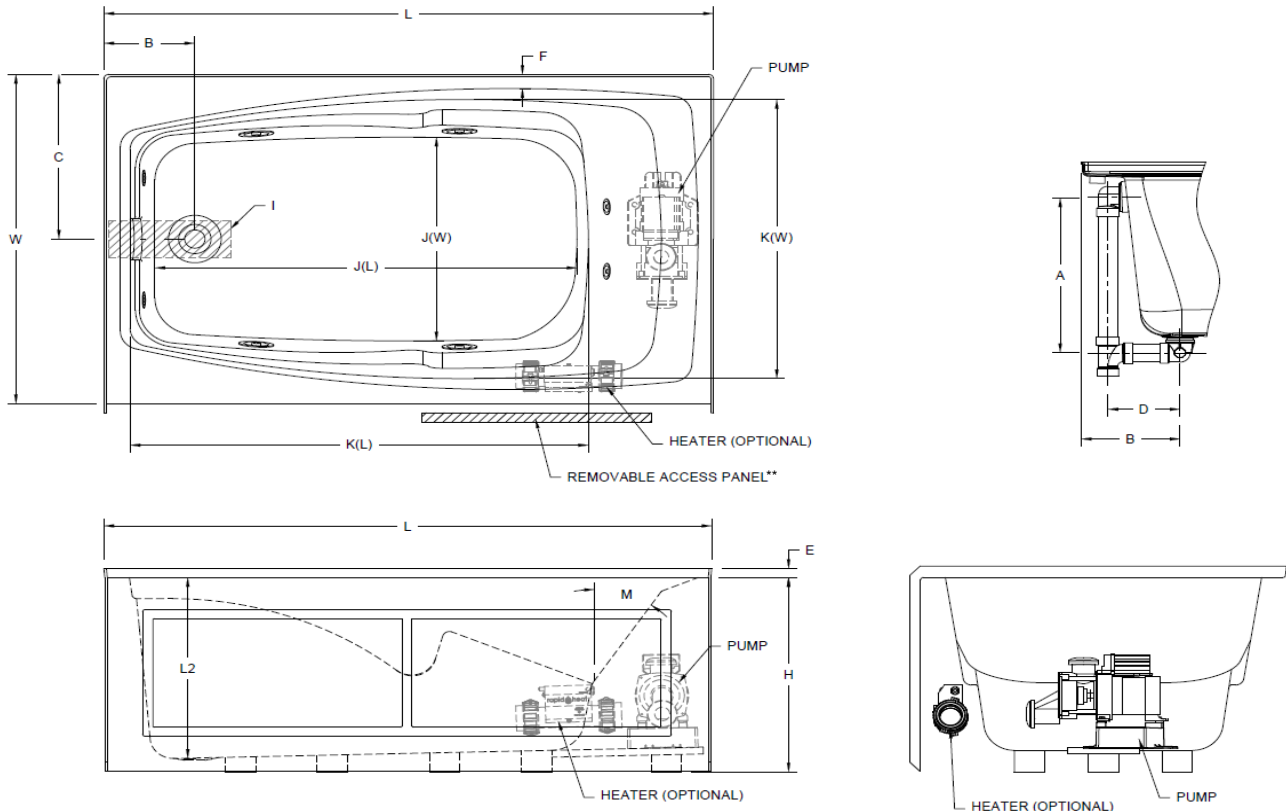
KEY DIMENSIONS

*Deck width reflects only area indicated on detail.

**Removable access panel standard on Whirlpool and Pure Air® models. Optional 2 access panels available for all models.

***Left hand Whirlpool model shown. Right hand model is exact opposite.

NOTE: Drawing not to scale



©2022 Jacuzzi Luxury Bath • For additional information, call Customer Service 800-288-4002 • www.jacuzzi.com/baths
Refer to installation instructions included with fixture before beginning installation. Please confirm product availability and specifications before commencing with any installation work.

PRODUCT SPECIFICATIONS AND AVAILABILITY ARE SUBJECT TO CHANGE WITHOUT NOTICE