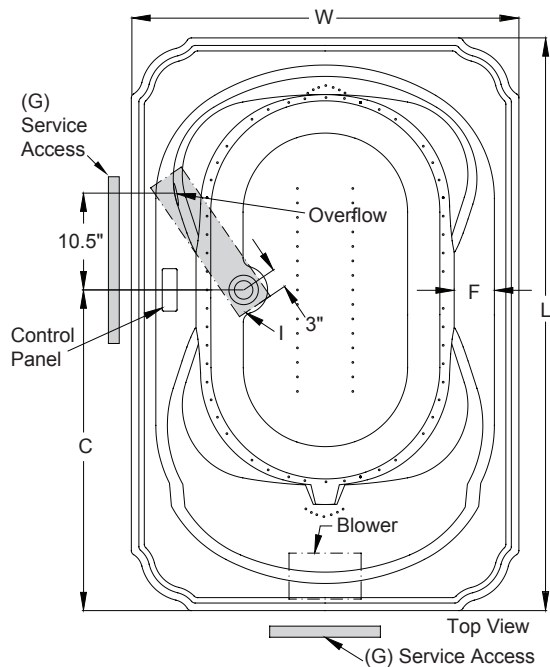
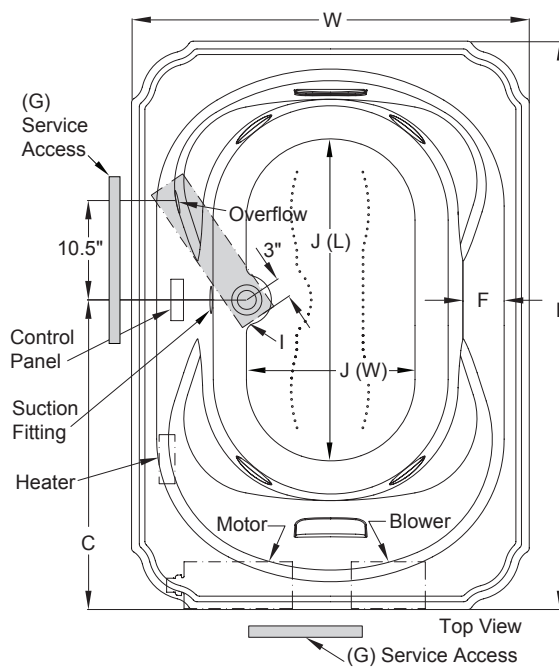


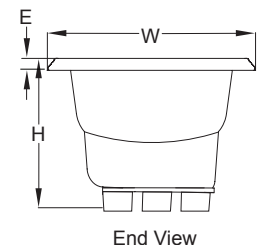
Marineo™ - Technical Specifications for 7242 Models

Letter	Description	SOAKING	PURE AIR® BATH	WHIRLPOOL	SALON® SPA	Each component requires a separate, dedicated GFCI protected circuit		
-	Drain/Motor Location	Center Drain/Right Side Motor And/Or Blower						
-	Cutout Template	Template Provided P/N P187000						
-	Total Weight	1191 lbs (540 kg)	1229 lbs (557 kg)	1233 lbs (559 kg)	1279 lbs (580 kg)			
-	Floor Loading	57 lb/ft ² (277 kg/m ²)	59 lb/ft ² (286 kg/m ²)	59 lb/ft ² (287 kg/m ²)	61 lb/ft ² (297 kg/m ²)			
-	Operating Gallons (Max)	95 gallons (359.6 liters)						
-	Product Weight	85 lbs (39 kg)	138 lbs (63 kg)	142 lbs (64 kg)	188 lbs (85 kg)			
-	Soaking Depth	17.5" (444.5 mm)						
L	Outer Length	72" (1829 mm)						
W	Outer Width	42" (1067 mm)						
H	Overall Height	26" (660 mm)						
A	Overflow Height	18.75" (476 mm)						
B	Long Edge to Drain Center	11.75" (298 mm)						
C	Short Edge to Drain Center	36" (914 mm)						
D	Drain Shoe Length	6" (152 mm)						
E	Deck Height	2" (51 mm)						
F	Deck Width	3" (76 mm)						
G	Service Access Dimensions	12" x 18" (305 mm x 457 mm)						
I	Floor Cutout for Drain	12" x 6" (305 mm x 152 mm)						
J	Interior Dimensions (bottom of bath) L x W	46" x 25" (1168 mm x 635 mm)						
						Model with components	GFCI Outlet (60Hz)	
						SOAKING	Soaker only	None
							Soaker w/ Chromatherapy	
						PURE AIR® BATH	Blower	120V 15A
							Chromatherapy (if available)	
						WHIRLPOOL	Motor/Pump	120V 20A
							Heater (if available)	120V 15A
						SALON® SPA	Motor/Pump/Heater	240V 20A
							Blower	120V 15A

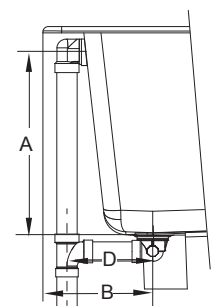
KEY DIMENSIONS* [NOTE: The overall dimensions are nominal with a tolerance of +0 and -.25" (6mm).]

 Marineo™ Soaking And Pure Air® Bath Models
(Pure Air® Bath Shown)

 Marineo™ Whirlpool And Salon® Spa Models
(Salon® Spa Shown)


All Models



End View



Drain/Overflow

Refer to installation instructions included with fixture before beginning installation. Please confirm product availability and specifications before commencing with any installation work.

PRODUCT SPECIFICATIONS AND AVAILABILITY ARE SUBJECT TO CHANGE WITHOUT NOTICE