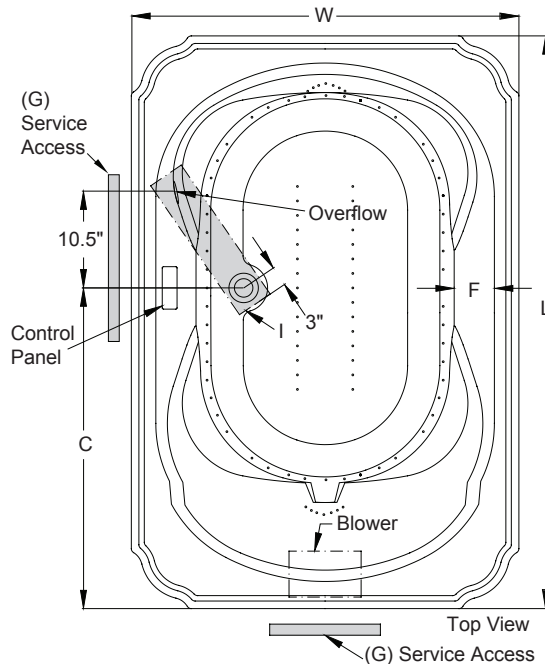
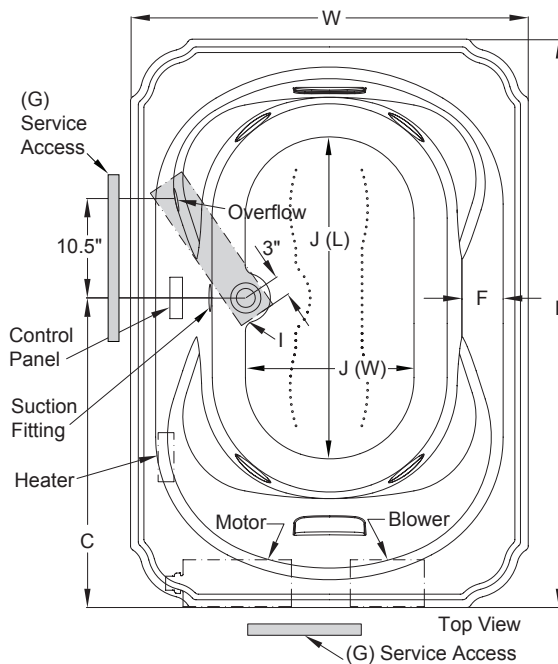


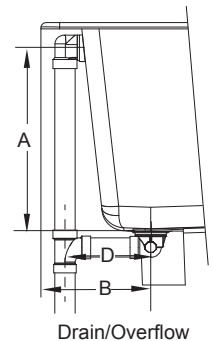
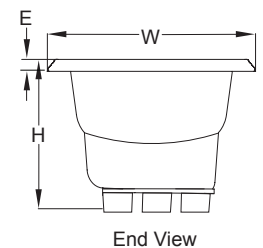
**Marineo™ - Technical Specifications for 6042 Models**

Letter	Description	SOAKING	PURE AIR® BATH	WHIRLPOOL	SALON® SPA	Each component requires a separate, dedicated GFCI protected circuit		
-	Drain/Motor Location	Center Drain/Right Side Motor And/Or Blower						
-	Cutout Template	Template Provided P/N P187000						
-	Total Weight	970 lbs (440 kg)	1027 lbs (466 kg)	1041 lbs (472 kg)	1071 lbs (486 kg)			
-	Floor Loading	55 lb/ft <sup>2</sup> (271 kg/m <sup>2</sup> )	59 lb/ft <sup>2</sup> (286 kg/m <sup>2</sup> )	59 lb/ft <sup>2</sup> (290 kg/m <sup>2</sup> )	61 lb/ft <sup>2</sup> (299 kg/m <sup>2</sup> )			
-	Operating Gallons (Max)	78.0 gallons (295.2 liters)						
-	Product Weight	70 lbs (32 kg)	127 lbs (58 kg)	141 lbs (64 kg)	171 lbs (78 kg)			
-	Soaking Depth	17.5" (444.5 mm)						
L	Outer Length	60" (1524 mm)						
W	Outer Width	42" (1067 mm)						
H	Overall Height	26" (660 mm)						
A	Overflow Height	18.75" (476 mm)						
B	Long Edge to Drain Center	11.75" (298 mm)						
C	Short Edge to Drain Center	32.7" (831 mm)						
D	Drain Shoe Length	6" (152 mm)						
E	Deck Height	2" (51 mm)						
F	Deck Width	3" (76 mm)						
G	Service Access Dimensions	12" x 18" (305 mm x 457 mm)						
I	Floor Cutout for Drain	12" x 6" (305 mm x 152 mm)						
J	Interior Dimensions (bottom of bath) L x W	39" x 24" (991 mm x 610 mm)						
						<b>Model with components</b>	<b>GFCI Outlet (60Hz)</b>	
						<b>SOAKING</b>	Soaker only	None
							Soaker w/ Chromatherapy	120V 15A
						<b>PURE AIR® BATH</b>	Blower	
							Chromatherapy (if available)	
						<b>WHIRLPOOL</b>	Motor/Pump	120V 20A
							Heater (if available)	120V 15A
						<b>SALON® SPA</b>	Motor/Pump/Heater	240V 20A
							Blower	120V 15A

**KEY DIMENSIONS\* [NOTE: The overall dimensions are nominal with a tolerance of +0 and -.25" (6mm).]**

 Marineo™ Soaking And Pure Air® Bath Models  
(Pure Air® Bath Shown)

 Marineo™ Whirlpool And Salon® Spa Models  
(Salon® Spa Shown)


All Models



Refer to installation instructions included with fixture before beginning installation. Please confirm product availability and specifications before commencing with any installation work.

PRODUCT SPECIFICATIONS AND AVAILABILITY ARE SUBJECT TO CHANGE WITHOUT NOTICE

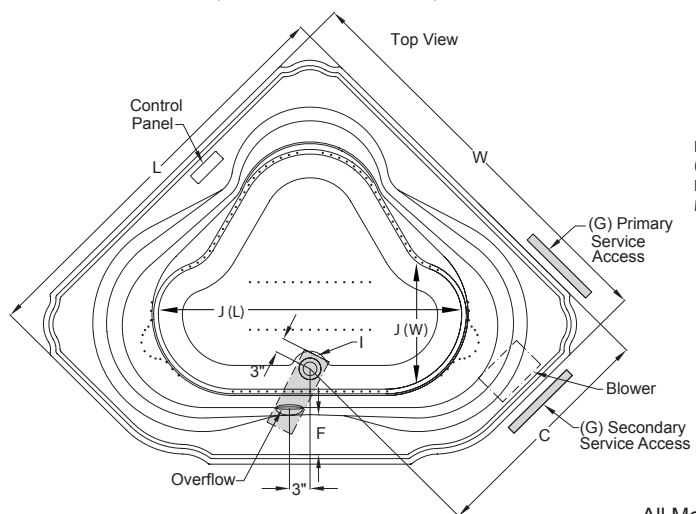
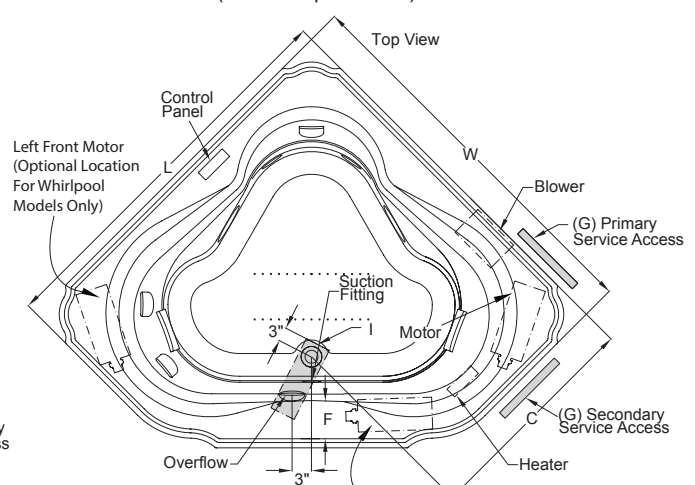
**Marineo™ - Technical Specifications for 6060 Models**

Letter	Description	SOAKING	PURE AIR® BATH	WHIRLPOOL	SALON® SPA	Each component requires a separate, dedicated GFCI protected circuit	
-	Drain/Motor Location	Center Drain/Right Side Motor And/Or Blower					
-	Cutout Template	Template Provided P/N P654000					
-	Total Weight	1146 lbs (520 kg)	1221 lbs (554 kg)	1226 lbs (556 kg)	1256 lbs (570 kg)		
-	Floor Loading	46 lb/ft <sup>2</sup> (224 kg/m <sup>2</sup> )	49 lb/ft <sup>2</sup> (238 kg/m <sup>2</sup> )	49 lb/ft <sup>2</sup> (239 kg/m <sup>2</sup> )	50 lb/ft <sup>2</sup> (245 kg/m <sup>2</sup> )		
-	Operating Gallons (Max)	92.0 gallons (348.2 liters)					
-	Product Weight	80 lbs (36 kg)	155 lbs (70 kg)	160 lbs (73 kg)	190 lbs (86 kg)		
-	Soaking Depth	17.3" (438.15 mm)					
L	Outer Length	60" (1524 mm)					
W	Outer Width	60" (1524 mm)					
H	Overall Height	25" (635 mm)					
A	Overflow Height	18.5" (470 mm)					
B	Long Edge to Drain Center	14" (356 mm)					
C	Short Edge to Drain Center	34.5" (876 mm)					
D	Drain Shoe Length	7.5" (191 mm)					
E	Deck Height	2" (51 mm)					
F	Deck Width	6" (152 mm)					
G	Service Access Dimensions	12" x 18" (305 mm x 457 mm)					
I	Floor Cutout for Drain	12" x 6" (305 mm x 152 mm)					
J	Interior Dimensions (bottom of bath) L x W	44" x 36" (1118 mm x 914 mm)					

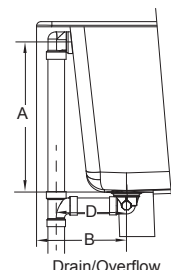
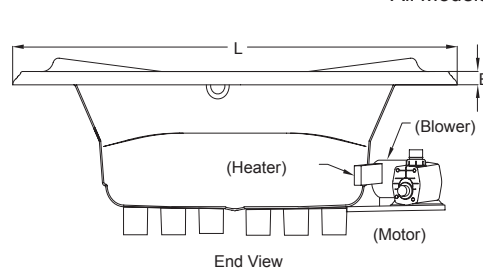
  

Model with components		GFCI Outlet (60Hz)
SOAKING	Soaker only	None
	Soaker w/ Chromotherapy	
PURE AIR® BATH	Blower	120V 15A
	Chromotherapy (if available)	
WHIRLPOOL	Motor/Pump	120V 20A
	Heater (if available)	120V 15A
SALON® SPA	Motor/Pump/Heater	240V 20A
	Blower	120V 15A

**KEY DIMENSIONS\* [NOTE: The overall dimensions are nominal with a tolerance of +0 and -.25" (6mm).]**

 Marineo™ Soaking And Pure Air® Bath Models  
 (Pure Air® Bath Shown)

 Marineo™ Whirlpool And Salon® Spa Models  
 (Salon® Spa Shown)


All Models



Refer to installation instructions included with fixture before beginning installation. Please confirm product availability and specifications before commencing with any installation work.

PRODUCT SPECIFICATIONS AND AVAILABILITY ARE SUBJECT TO CHANGE WITHOUT NOTICE

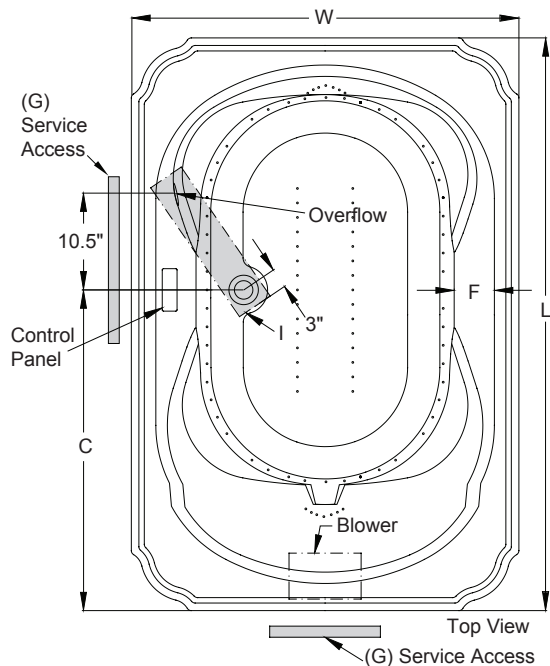
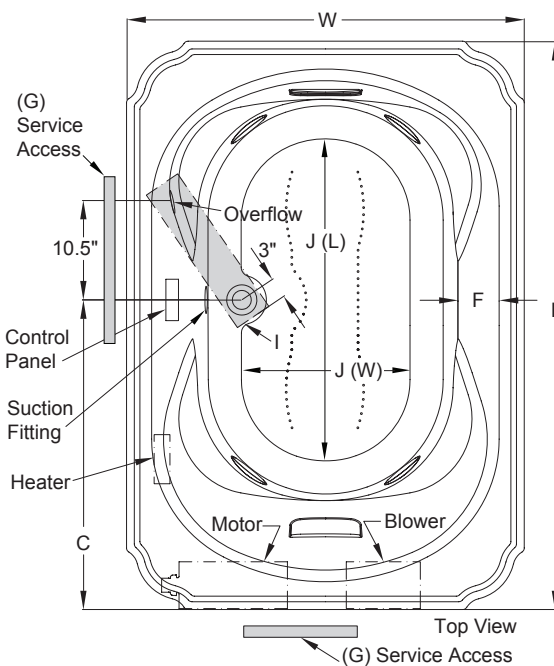
**Marineo™ - Technical Specifications for 6642 Models**

Letter	Description	SOAKING	PURE AIR® BATH	WHIRLPOOL	SALON® SPA	Each component requires a separate, dedicated GFCI protected circuit	
-	Drain/Motor Location	Center Drain/Right Side Motor And/Or Blower					
-	Cutout Template	Template Provided P/N P187000					
-	Total Weight	1068 lbs (484 kg)	1116 lbs (506 kg)	1113 lbs (505 kg)	1171 lbs (531 kg)		
-	Floor Loading	55 lb/ft <sup>2</sup> (271 kg/m <sup>2</sup> )	58 lb/ft <sup>2</sup> (283 kg/m <sup>2</sup> )	58 lb/ft <sup>2</sup> (282 kg/m <sup>2</sup> )	61 lb/ft <sup>2</sup> (297 kg/m <sup>2</sup> )		
-	Operating Gallons (Max)	88 gallons (333.1 liters)					
-	Product Weight	85 lbs (39 kg)	133 lbs (60 kg)	130 lbs (59 kg)	188 lbs (85 kg)		
-	Soaking Depth	17.5" (444.5 mm)					
L	Outer Length	66" (1676 mm)					
W	Outer Width	42" (1067 mm)					
H	Overall Height	26" (660 mm)					
A	Overflow Height	18.75" (476 mm)					
B	Long Edge to Drain Center	11.75" (298 mm)					
C	Short Edge to Drain Center	35.7" (907 mm)					
D	Drain Shoe Length	6" (152 mm)					
E	Deck Height	2" (51 mm)					
F	Deck Width	3" (76 mm)					
G	Service Access Dimensions	12" x 18" (305 mm x 457 mm)					
I	Floor Cutout for Drain	12" x 6" (305 mm x 152 mm)					
J	Interior Dimensions (bottom of bath) L x W	47" x 25" (1194 mm x 635 mm)					

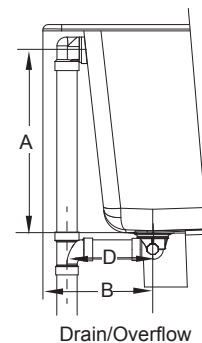
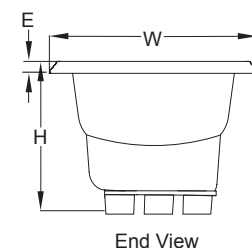
  

Model with components		GFCI Outlet (60Hz)
SOAKING	Soaker only	None
	Soaker w/ Chromatherapy	120V 15A
PURE AIR® BATH	Blower	
	Chromatherapy (if available)	
WHIRLPOOL	Motor/Pump	120V 20A
	Heater (if available)	120V 15A
SALON® SPA	Motor/Pump/ Heater	240V 20A
	Blower	120V 15A

**KEY DIMENSIONS\* [NOTE: The overall dimensions are nominal with a tolerance of +0 and -.25" (6mm).]**

 Marineo™ Soaking And Pure Air® Bath Models  
 (Pure Air® Bath Shown)

 Marineo™ Whirlpool And Salon® Spa Models  
 (Salon® Spa Shown)


All Models



Refer to installation instructions included with fixture before beginning installation. Please confirm product availability and specifications before commencing with any installation work.

PRODUCT SPECIFICATIONS AND AVAILABILITY ARE SUBJECT TO CHANGE WITHOUT NOTICE

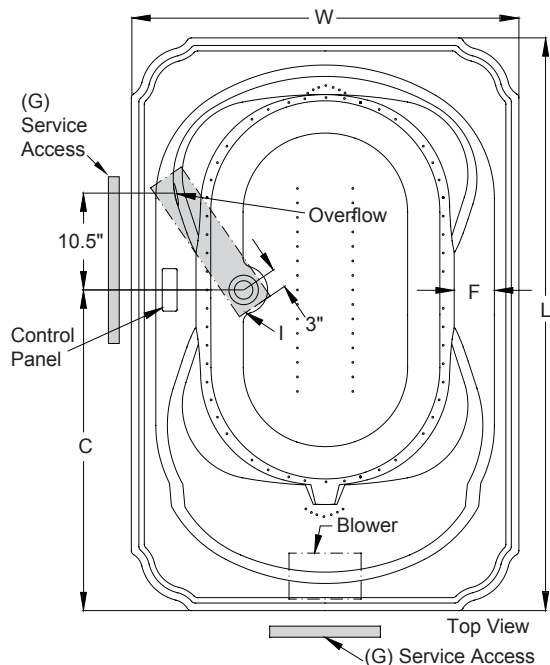
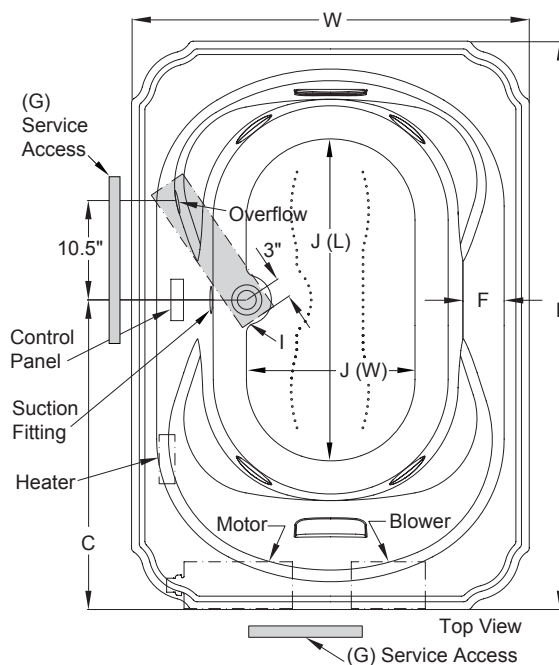
**Marineo™ - Technical Specifications for 7242 Models**

Letter	Description	SOAKING	PURE AIR® BATH	WHIRLPOOL	SALON® SPA	Each component requires a separate, dedicated GFCI protected circuit	
-	Drain/Motor Location	Center Drain/Right Side Motor And/Or Blower					
-	Cutout Template	Template Provided P/N P187000					
-	Total Weight	1191 lbs (540 kg)	1229 lbs (557 kg)	1233 lbs (559 kg)	1279 lbs (580 kg)		
-	Floor Loading	57 lb/ft <sup>2</sup> (277 kg/m <sup>2</sup> )	59 lb/ft <sup>2</sup> (286 kg/m <sup>2</sup> )	59 lb/ft <sup>2</sup> (287 kg/m <sup>2</sup> )	61 lb/ft <sup>2</sup> (297 kg/m <sup>2</sup> )		
-	Operating Gallons (Max)	95 gallons (359.6 liters)					
-	Product Weight	85 lbs (39 kg)	138 lbs (63 kg)	142 lbs (64 kg)	188 lbs (85 kg)		
-	Soaking Depth	17.5" (444.5 mm)					
L	Outer Length	72" (1829 mm)					
W	Outer Width	42" (1067 mm)					
H	Overall Height	26" (660 mm)					
A	Overflow Height	18.75" (476 mm)					
B	Long Edge to Drain Center	11.75" (298 mm)					
C	Short Edge to Drain Center	36" (914 mm)					
D	Drain Shoe Length	6" (152 mm)					
E	Deck Height	2" (51 mm)					
F	Deck Width	3" (76 mm)					
G	Service Access Dimensions	12" x 18" (305 mm x 457 mm)					
I	Floor Cutout for Drain	12" x 6" (305 mm x 152 mm)					
J	Interior Dimensions (bottom of bath) L x W	46" x 25" (1168 mm x 635 mm)					

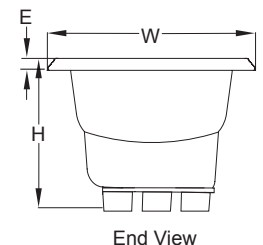
  

Model with components		GFCI Outlet (60Hz)
SOAKING	Soaker only	None
	Soaker w/ Chromatherapy	120V 15A
PURE AIR® BATH	Blower	
	Chromatherapy (if available)	
WHIRLPOOL	Motor/Pump	120V 20A
	Heater (if available)	120V 15A
SALON® SPA	Motor/Pump/Heater	240V 20A
	Blower	120V 15A

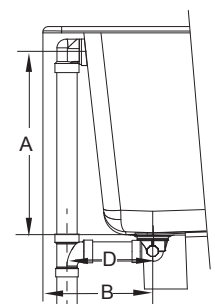
**KEY DIMENSIONS\* [NOTE: The overall dimensions are nominal with a tolerance of +0 and -.25" (6mm).]**

 Marineo™ Soaking And Pure Air® Bath Models  
(Pure Air® Bath Shown)

 Marineo™ Whirlpool And Salon® Spa Models  
(Salon® Spa Shown)


All Models



End View



Drain/Overflow

Refer to installation instructions included with fixture before beginning installation. Please confirm product availability and specifications before commencing with any installation work.

PRODUCT SPECIFICATIONS AND AVAILABILITY ARE SUBJECT TO CHANGE WITHOUT NOTICE