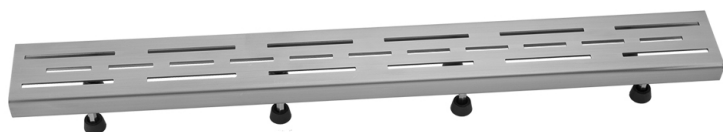


## 60" Channel Drain Slotted Line Hole Grate

**Model #: 6220-60-**

### FEATURES:

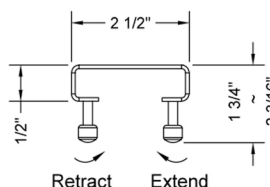
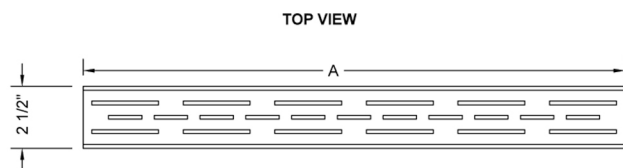
- 304 stainless steel construction
- Nominal Size: 60"
- Key included to remove grate for easy cleaning
- Adjustable feet for perfect installation
- JACLO channel drain body sold separately
- Standard finishes: BSS & PSS. Additional finishes available: BKN, BU, EB, JG, MBK, ORB, PB, PG, SB, SDB, SG, TB, WH. Call for pricing and availability



### AVAILABLE FINISHES:

Matte Black (MBK)    Polished Stainless (PSS)    Brushed Stainless (BSS)

### SPECIFICATION DRAWING:



| JACLO LINE GRATE ONLY |             |         |
|-----------------------|-------------|---------|
| PART. #               | DESCRIPTION | A       |
| 6220-24-XXX           | LINE GRATE  | 22 1/4" |
| 6220-32-XXX           | LINE GRATE  | 30 1/8" |
| 6220-36-XXX           | LINE GRATE  | 34 1/8" |
| 6220-42-XXX           | LINE GRATE  | 42"     |
| 6220-48-XXX           | LINE GRATE  | 46"     |
| 6220-60-XXX           | LINE GRATE  | 57 3/4" |

### COMPLIANCES:

Complies with: ASME A112.18.2-2015/CSA B125.2-15