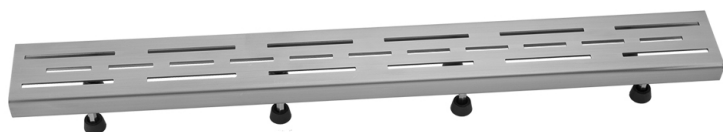


## 42" Channel Drain Slotted Line Hole Grate

**Model #: 6220-42-**

### FEATURES:

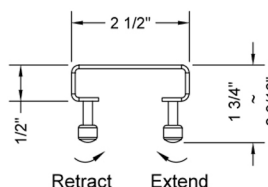
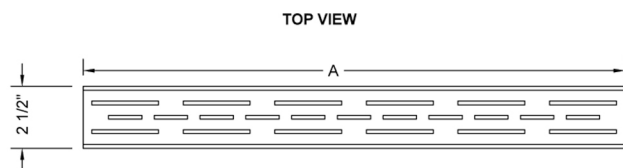
- 304 stainless steel construction
- Nominal Size: 42"
- Key included to remove grate for easy cleaning
- Adjustable feet for perfect installation
- JACLO channel drain body sold separately
- Standard finishes: BSS & PSS. Additional finishes available: BKN, BU, EB, JG, MBK, ORB, PB, PG, SB, SDB, SG, TB, WH. Call for pricing and availability



### AVAILABLE FINISHES:

Polished Stainless (PSS)    Brushed Stainless (BSS)

### SPECIFICATION DRAWING:



JACLO LINE GRATE ONLY		
PART. #	DESCRIPTION	A
6220-24-XXX	LINE GRATE	22 1/4"
6220-32-XXX	LINE GRATE	30 1/8"
6220-36-XXX	LINE GRATE	34 1/8"
6220-42-XXX	LINE GRATE	42"
6220-48-XXX	LINE GRATE	46"
6220-60-XXX	LINE GRATE	57 3/4"

### COMPLIANCES:

Complies with: ASME A112.18.2-2015/CSA B125.2-15