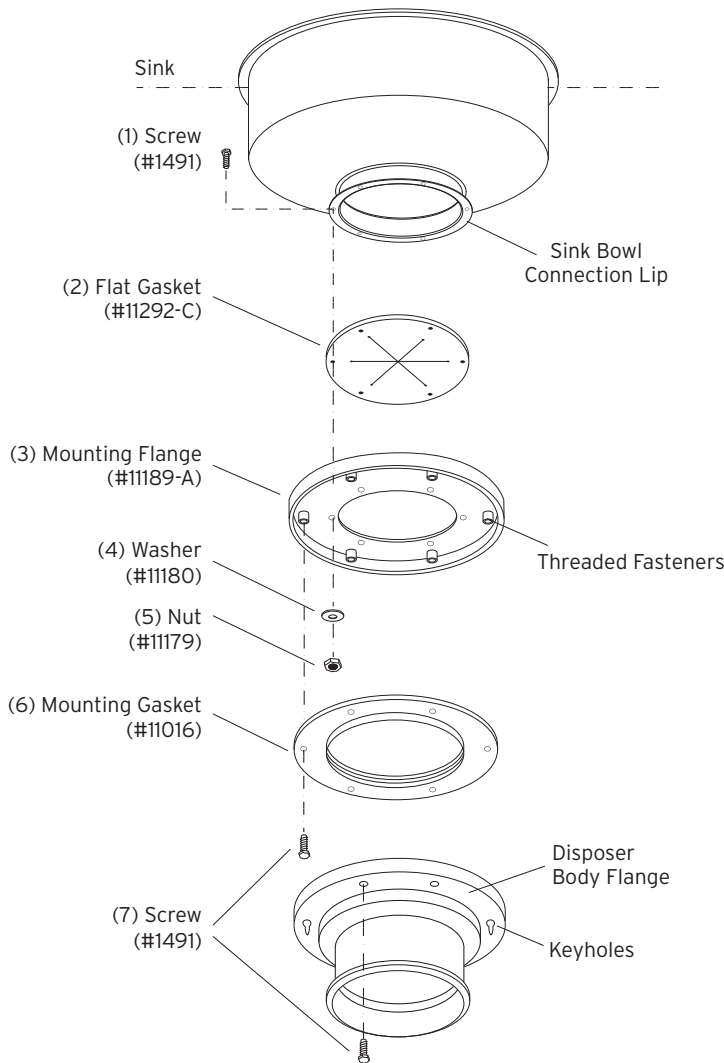


This adaptor will fit a sink opening of:  
**4-1/2" I.D. and 6-1/2" O.D.**  
 with 5-1/2" bolt hole circle



## Installation Instructions

1. Insert six screws (1) through the sink bowl connection lip, flat gasket (2) and mounting flange (3). With screws protruding through the mounting flange (3), attach six washers (4) and six nuts (5). Tighten all screws evenly.
2. Position the disposer for plumbing hookup and check the location of the keyhole slots in the disposer body flange.
3. Attach two screws (7) through opposite holes in the mounting gasket (6), and into the threaded fasteners in the mounting flange (3). The screws (7) should be protruding approximately 1/4 inch below the mounting gasket (6).
4. Position the disposer beneath the mounting gasket (6) and engage the two protruding screws in the keyhole slots in the disposer body flange. Assemble the remaining four screws (7). Tighten all screws evenly to secure the unit.