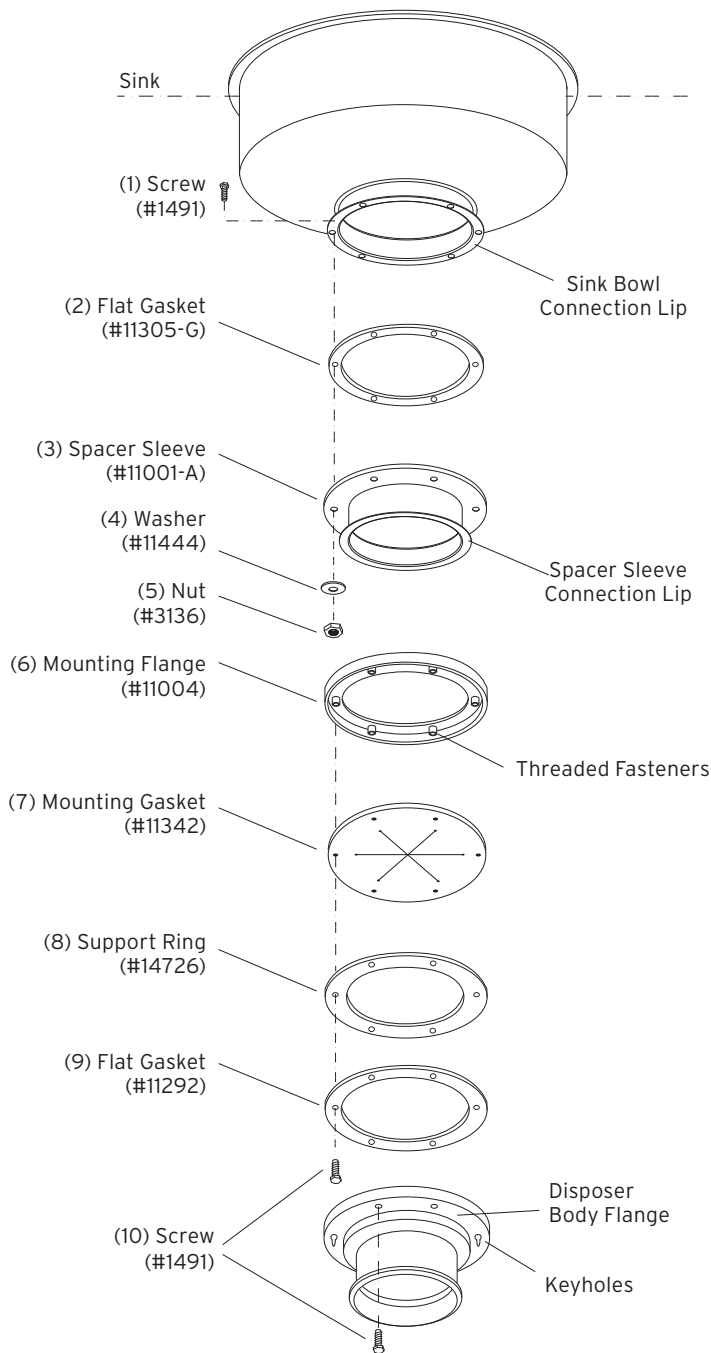


Mounting Adaptor (#11378-D)

This adaptor will fit a sink opening of:
6" I.D. and 7-1/2" O.D.
 with **6-7/8" bolt hole circle**



Installation Instructions

1. Insert six screws (1) through the sink bowl connection lip, flat gasket (2), and spacer sleeve (3). With screws protruding through the spacer sleeve (3), attach six washers (4) and six nuts (5). Tighten all screws evenly.
2. Place mounting flange (6) over the spacer sleeve connection lip (3). Push mounting flange (6) up out of the way and fit inside groove of mounting gasket (7) onto the spacer sleeve connection lip (3).
3. Move mounting flange (6) down over mounting gasket (7). Be certain that the threaded fasteners in the mounting flange (6) fit into the recesses in the top of the mounting gasket (7).
4. Attach two screws (10) through opposite holes in the bottom of the flat gasket (9), support ring (8), mounting gasket (7), and into the threaded fasteners in the mounting flange (6). The screws (10) should be protruding approximately 1/4 inch below the mounting gasket (7).
5. Position the disposer beneath the flat gasket (9) and engage the two protruding screws in the keyhole slots in the disposer body flange. Assemble the remaining four screws (10) and turn the disposer into place for plumbing connections. Tighten all screws evenly to secure the unit.